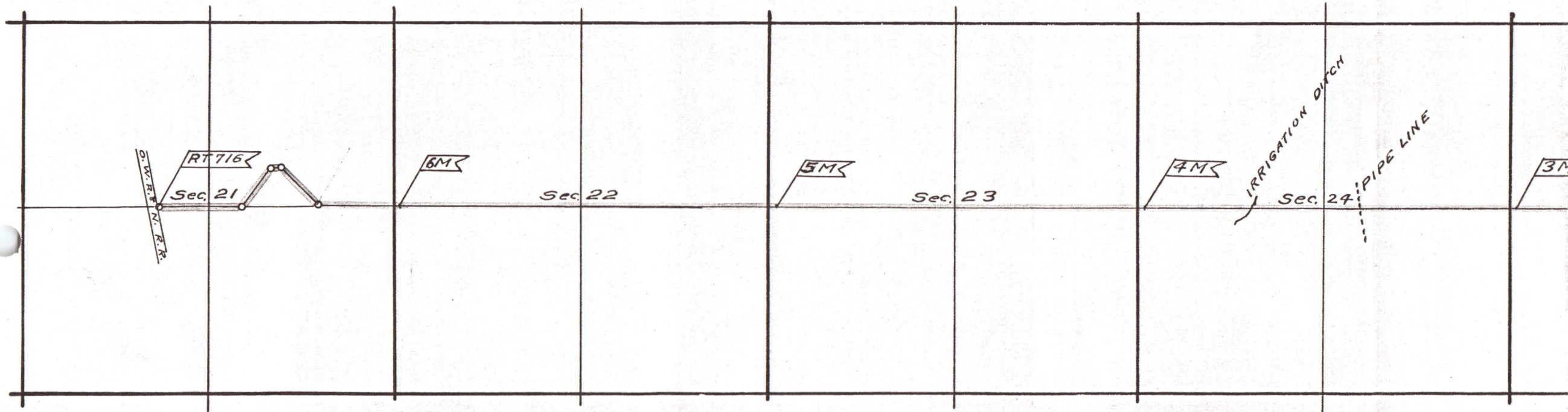


PLAT OF COUNTY ROAD No. 71

INT. 5 N., R. 28 & 29 E. W. M.

SURVEYED MAY 26 1911

Scale 25 Chs = 1 In.





COUNTY ROAD No. 716

1/4 R. 28 & 29 E. W. M.

SURVEYED MAY 26 1911

Scale 25 Chs = 1 In.

Geary Kimbrell  
County Surveyor

