

UMATILLA INDAIN AGENCY ROAD DEPARTMENT

SQUAW CR. SURVEY

TWN. 2&3 N. RG. 35 EAST WILLAMETTE M. SCALE 1" = 400'

DECEMBER 1933

0+00 - 20 4+87.3

TOTAL LENGTH 3.89 MILES

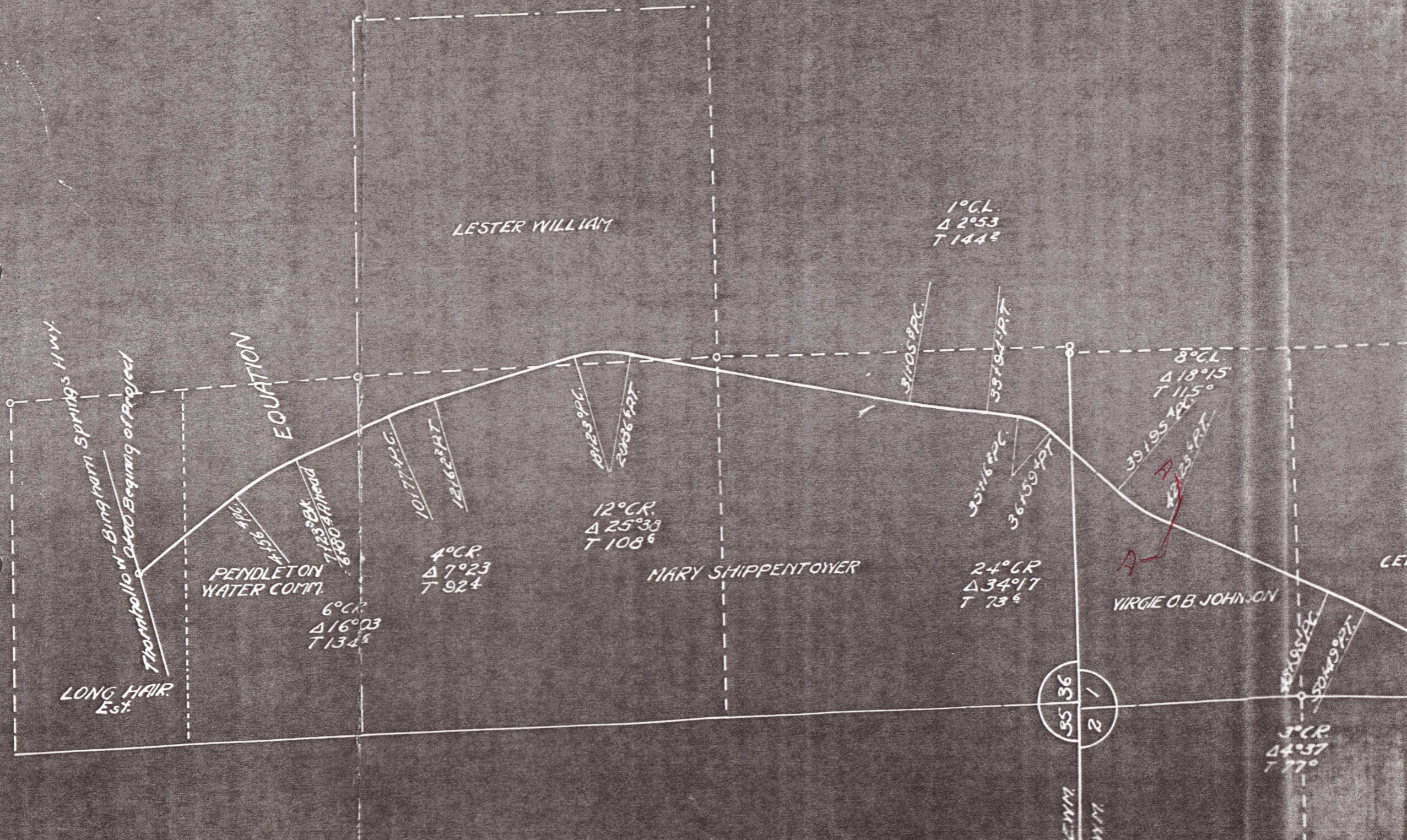
RIGHT OF WAY 40 FT.

APPROVED

O. L. BARBOCK
SUPERINTENDENT

Allen F. Space
DISTRICT ENGINEER





LESTER WILLIAM

1°CL.
 $\Delta 2^{\circ}53'$
 $T 144^{\circ}$

EQUATION

Thornhollo w- Bingham Springs Hwy.
 Beginning of Project
 LONG HAIR Est.

PENDLETON WATER COMP.

7123°BK
 2700-3411 head

6°CR
 $\Delta 16^{\circ}03'$
 $T 134^{\circ}$

4°CR
 $\Delta 7^{\circ}23'$
 $T 924^{\circ}$

MARY SHIPPENTOWER

12°CR
 $\Delta 25^{\circ}33'$
 $T 108^{\circ}$

24°CR
 $\Delta 34^{\circ}17'$
 $T 73^{\circ}$

VIRGIE O.B. JOHNSON

8°CL
 $\Delta 18^{\circ}15'$
 $T 115^{\circ}$

35 36
 2 1

3°CR
 $\Delta 4^{\circ}57'$
 $T 77^{\circ}$

10177°PT

12162°PT

18123°PT

20206°PT

31105°PT

35116°PT

36159°PT

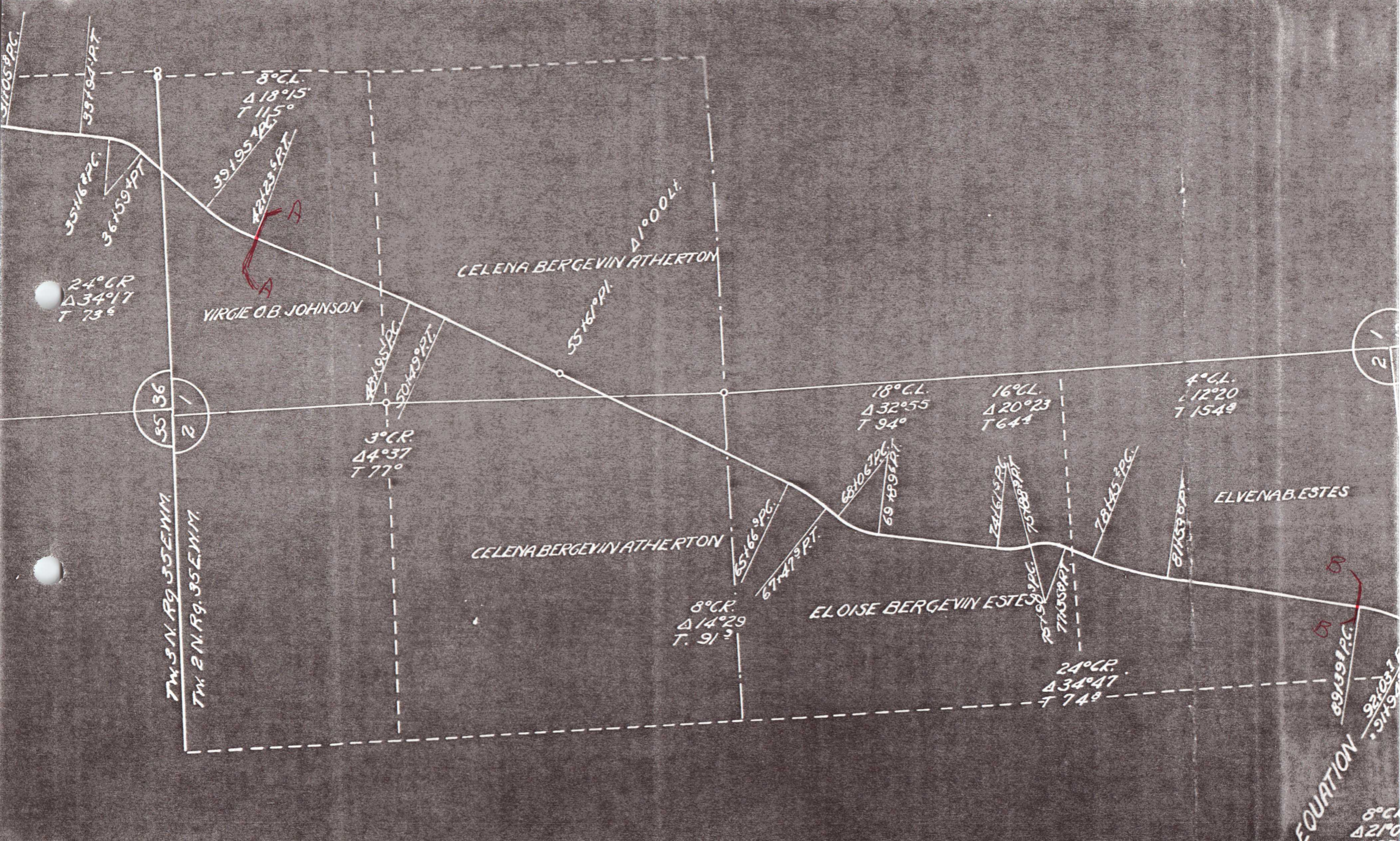
35107°PT

39195°PT

42123°PT

40195°PT

50449°PT



51058 PC

59761 PT

55162 PC
36159 PT

8° CL.
Δ 18° 15'
T 115°

39195 PC
42123 SPT

24° CR
Δ 34° 17'
T 73°

VIRGIE O.B. JOHNSON

CELENA BERGEVIN ATHERTON

Δ 1° 00' Lt.

55161° Pt.

48195 PC
50149° PT

3° CR
Δ 4° 37'
T 77°

18° CL.
Δ 32° 55'
T 94°

16° CL.
Δ 20° 23'
T 64°

4° CL.
Δ 12° 20'
T 154°

35 36
2 1

TW. 3 N. R. 9. 35 E. 1/4

TW. 2 N. R. 9. 35 E. 1/4

CELENA BERGEVIN ATHERTON

65166° PC
67147° PT

8° CR
Δ 14° 29'
T. 91°

ELOISE BERGEVIN ESTES

68106 PC
69189 PT

74161° PC
75180° PT

75190° PC
77158° PT

78145° PC

81153° PC

ELVENA B. ESTES

24° CR
Δ 34° 47'
T 74°

89139 PC

92103 PT
91179

EQUATION

8° CL.
Δ 21° 0'

21

4°CL.
Δ 12°20
T 1549

2 1
11 12

ELVENAB. ESTES

LOUIS BERGEVIN

6°CL
Δ 11°58
T 100¹

8°CL
Δ 18°53
T 119¹

9°CL.
Δ 9°56
T 55²

16°CL.
Δ 28°35
T 91²

16°CL.
Δ 28°25
T 90¹

20°CL
Δ 13°53
T 34⁹

16°CL
Δ 25°59
T 61⁵

20°CL.
Δ 27°59
T 71⁴

95143.7PC

97143.1PT

100121.0P

101790.9PT

110569.9PC

11167.9PT

114115.2C

115180.1PT

119190.9PC

120159.9PT

121192.2PC

122159.9PT

125109.3PT

129129.9PC

131164.9PT

EQUATION

89139.9PC

92109.7PT

91194.8POK

8°CR.
Δ 21°09
T 133¹

106159.9PC

108161.4PT

114120.8

112194.9PT

118164.9PC

119168.9PT

120146.1PC

121142.9PT

125134.9PC

126159.9PT

28°CR.
Δ 34°57
T 644

136104.9PC

139124.9PT

6°CR.
Δ 12°13
T 102²

16°CR.
Δ 19°51
T 62¹

24°CR.
Δ 24°52⁶
T 52⁶

36°CR.
Δ 29°24
T 419

4°CR.
Δ 12°43
T 160⁹

LOUIS BERGEVIN

C.D. BERGEVIN

REGINA M^{rs} BEAN PICARD

RALPH FARROW ←

BLANCHE BRO

11 12
14 13

8°CL
Δ 18°53
T 119'

4°CL
Δ 6°24
T 80'

5°CL
Δ 27°30
T 200'

2°CL
Δ 5°43
T 143'

129180°PC
131164°PAT

14916°PC
15121°PAT

162103°PC
167153°PAT

177156°PC
180142°PAT

1361048°PC
1391249°PAT

150188°PC
1531567°PAT

158197°PC
1601823°PAT

170100°PC
171141°PAT
172107°PC
174138°PAT

4°CR
Δ 12°48
T 160'

4°CR
Δ 6°59
T 87'

8°CR
Δ 14°49
T 93'

10°CR
Δ 14°10
T 71'

4°CR
Δ 9°14
T 115'

RALPH FARROW ←

ALBERT BROUILLARD

BLANCHE BROUILLARD DRAKE

BLANCHE BROUILLARD DRAKE

BLANCHE BROUILLARD DRAKE

R.
57

PICARD

14

5°CL.
Δ 27°30'
T. 143

2°CL.
Δ 5°43'
T. 143

167153.7 PT.

177156.9 PC.

180142.7 PT.

170100.6

171111.7 PT.

172107.4 PC.

174138.2 PT.

AURELLA BROUILLARD

HAROLD BROUILLARD

10°CR.
Δ 14°10'
T. 71

ANCHE BROUILLARD DRAKE 4°CR.
Δ 9°14'
T. 115

BLANCHE BROUILLARD DRAKE

6°CR.
Δ 9°34'
T. 799

191120.9 PC.

192119.3 PT.

196130.5 PC.

10°CR.
Δ 23°34'
T. 119

188166.3 PT.

20°CR.
Δ 27°23'
T. 699

202142.3 PC.

203149.8 PT.

203149.3 PC.

204187.3 PT.

30°CL.
Δ 41°17'
T. 72