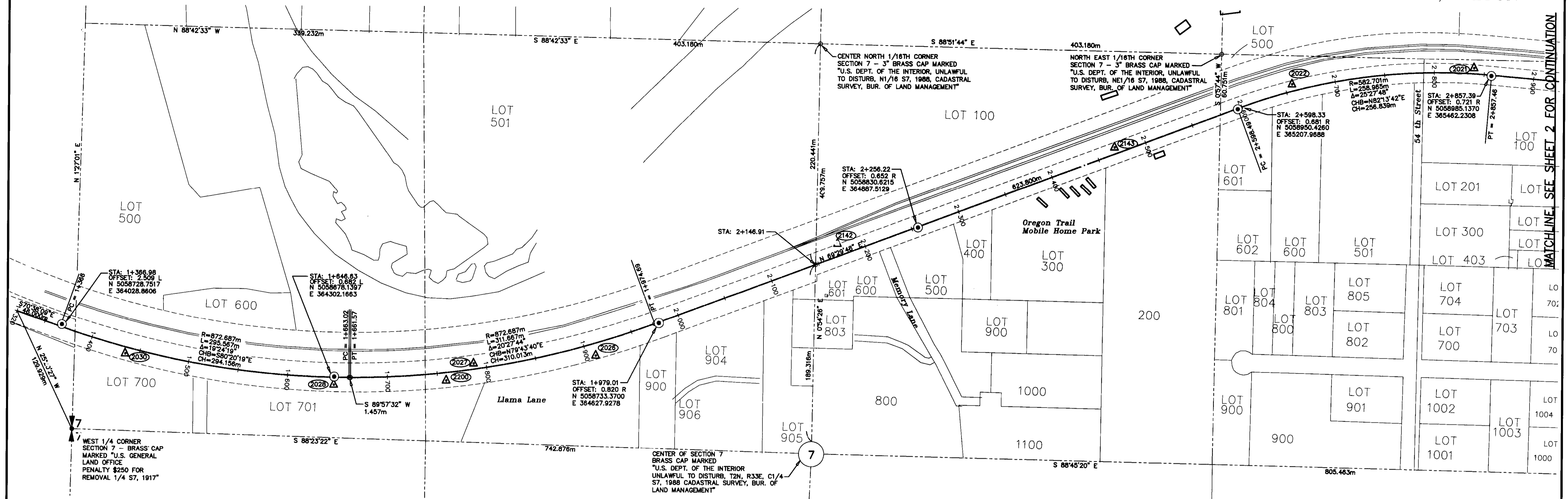


**RECORD OF SURVEY
FOR MISSION HWY (UIR 900)
MONUMENTATION
LOCATED IN PORTIONS OF
SECTIONS 7, 8 AND 9
T. 2 N., R. 33 E., W.M.,
UMATILLA COUNTY, OREGON**



NARRATIVE

THE PURPOSE OF THIS SURVEY IS TO MONUMENT THE DEED CENTERLINE OF MISSION HIGHWAY. THE MONUMENTS ARE REFERENCED TO THE CONSTRUCTION CENTERLINE OF THE UNITED STATES DEPARTMENT OF THE INTERIOR, BUREAU OF INDIAN AFFAIRS "UIR 900" PLANS DATED DECEMBER 1, 2006.

BASIS OF BEARINGS WERE ESTABLISHED FROM CONTROL RECOVERED AS SHOWN. THE HORIZONTAL DATUM IS UTM COORDINATE SYSTEM, HPGN/HARN, ZONE 11, METERS.

ALL CONTROL, COORDINATES, AND MONUMENT LOCATIONS PROVIDED BY BIA. NO ATTEMPT WAS MADE TO CHECK FOR ACCURACY OR CORRECTNESS.

SURVEY REFERENCES

THATCHER SURVEY
MISSION FRONTAGE HIGHWAY, STATE ROUTE 11, 2005

SEIBOLD, BUREAU OF LAND MANAGEMENT
DEPENDENT RESURVEY, SUBDIVISION OF SECTIONS 4 AND 9, 2005

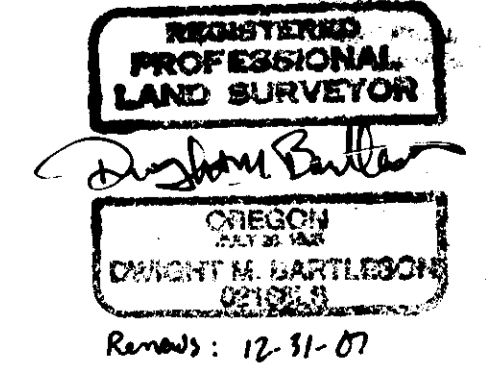
SEIBOLD, BUREAU OF LAND MANAGEMENT
DEPENDENT RESURVEY AND SUBDIVISION OF SECTIONS 6, 2002

LEGEND

- INDICATES CONTROL PER US DEPT. OF INTERIOR BUREAU OF INDIAN AFFAIRS, UIR 900 PLANS DATED 12-01-06
- INDICATES SET MONUMENT, A 5/8" x 24" REBAR IN MONUMENT CASE AND COVER
- INDICATED CALCULATED POSITION

MONUMENT RECOVERY

PT NO	NORTHING	EASTING	DESCRIPTION
W Qtr S7	5058624.533	364039.320	GLO Brass Cap
CN 1/16 S7	5059013.359	364788.391	3" Brass Cap
Cen S7	5058603.385	364781.6e2	USDI 3" Brass Cap
NE 1/16 S7	5059005.352	365191.491	USDI 3" Brass Cap
2021	5058992.752	365444.993	IRON ROD WITH ALUMINUM CAP
2022	5058975.464	365262.252	IRON ROD WITH ALUMINUM CAP
2026	5058700.515	364564.705	IRON ROD WITH ALUMINUM CAP
2027	5058691.936	364442.086	IRON ROD WITH ALUMINUM CAP
2028	5058670.206	364301.884	IRON ROD WITH ALUMINUM CAP
2030	5058699.922	364092.707	IRON ROD WITH ALUMINUM CAP
2142	5058813.93	364806.911	IRON ROD WITH PLASTIC CAP
2143	5058911.822	365084.678	IRON ROD WITH PLASTIC CAP
2200	5058674.950	364414.678	IRON ROD WITH ALUMINUM CAP



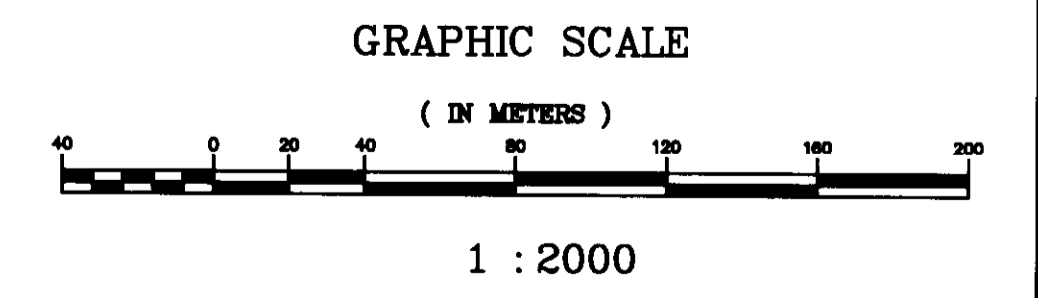
RECEIVED BY
UMATILLA COUNTY SURVEYOR

Date: _____
Rec'd By: _____
No. _____

DATE: NOV 1, 2007
SCALE: 1:2000
JOB NO.:
CALC BY:
DRAWN BY:
CHECKED BY:
SHEET 1 OF 3

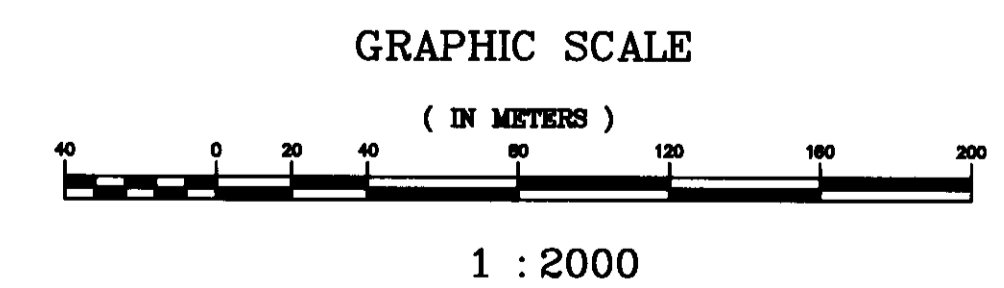
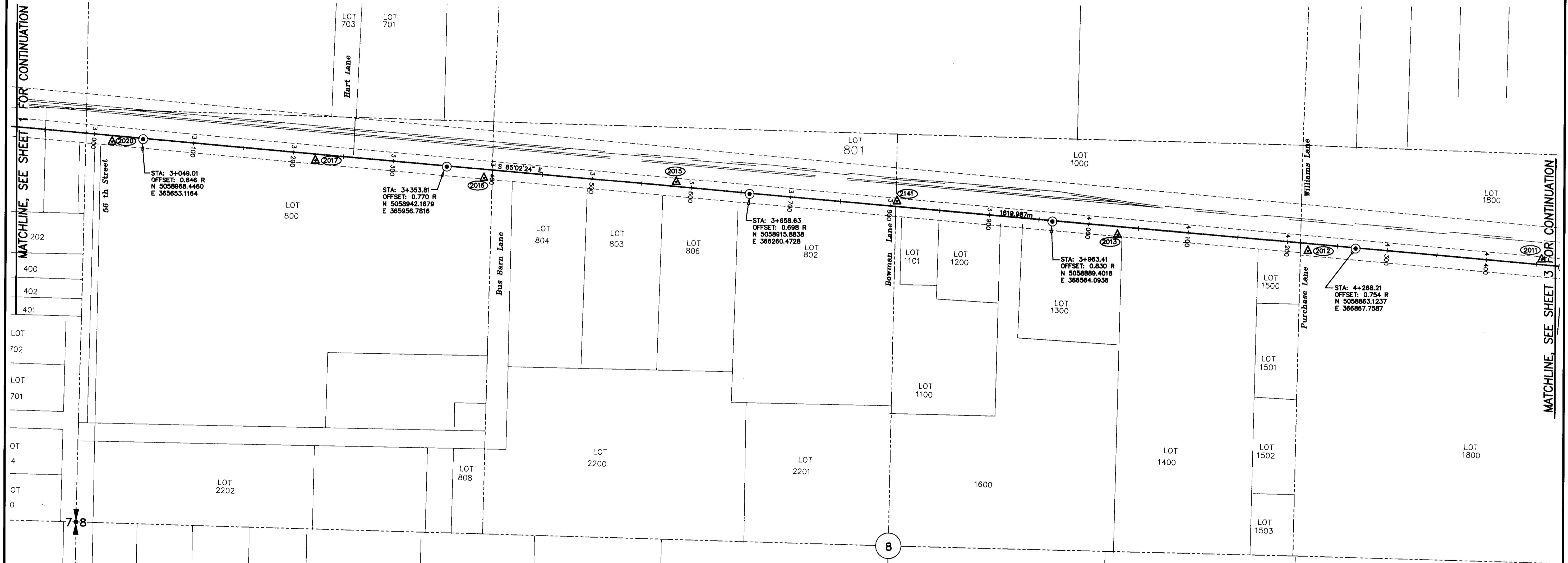
**UNITED STATES DEPARTMENT OF THE INTERIOR
BUREAU OF INDIAN AFFAIRS
WARM SPRINGS AGENCY
BRANCH OF ROADS
4231 HOLIDAY WAY
WARM SPRINGS, OREGON 97761
PHONE: (541) 553-2423 FAX: (541) 553-6151**

**DWIGHT BARTLESON
LAND SURVEYING
15921 N SYCAMORE ST
MEAD, WA 99021
PH: 509 467-3758**



MATCHLINE SEE SHEET 2 FOR CONTINUATION

**RECORD OF SURVEY
FOR MISSION HWY (UIR 900)
MONUMENTATION
LOCATED IN PORTIONS OF
SECTIONS 7, 8 AND 9
T. 2 N., R. 33 E., W.M.,
UMATILLA COUNTY, OREGON**



MONUMENT RECOVERY

PT NO	NORTHING	EASTING	DESCRIPTION
2012	5058860.539	366820.206	IRON FOR WITH ALUMINUM CAP
2013	5058876.225	366629.618	IRON FOR WITH ALUMINUM CAP
2015	5058927.622	366187.179	IRON FOR WITH ALUMINUM CAP
2016	5058930.973	365994.213	IRON FOR WITH ALUMINUM CAP
2017	5058948.003	365825.483	IRON FOR WITH ALUMINUM CAP
2020	5058965.888	365622.132	IRON FOR WITH ALUMINUM CAP
2141	5058909.082	366408.473	IRON ROD WITH PLASTIC CAP

REGISTERED
PROFESSIONAL
LAND SURVEYOR

Dwight M. Bartleson

OREGON
Dwight M. Bartleson
02188-S
Retired 12-31-07

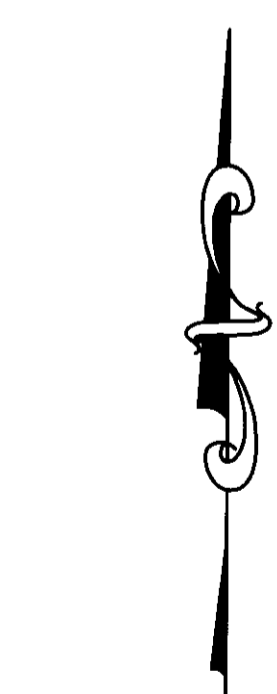
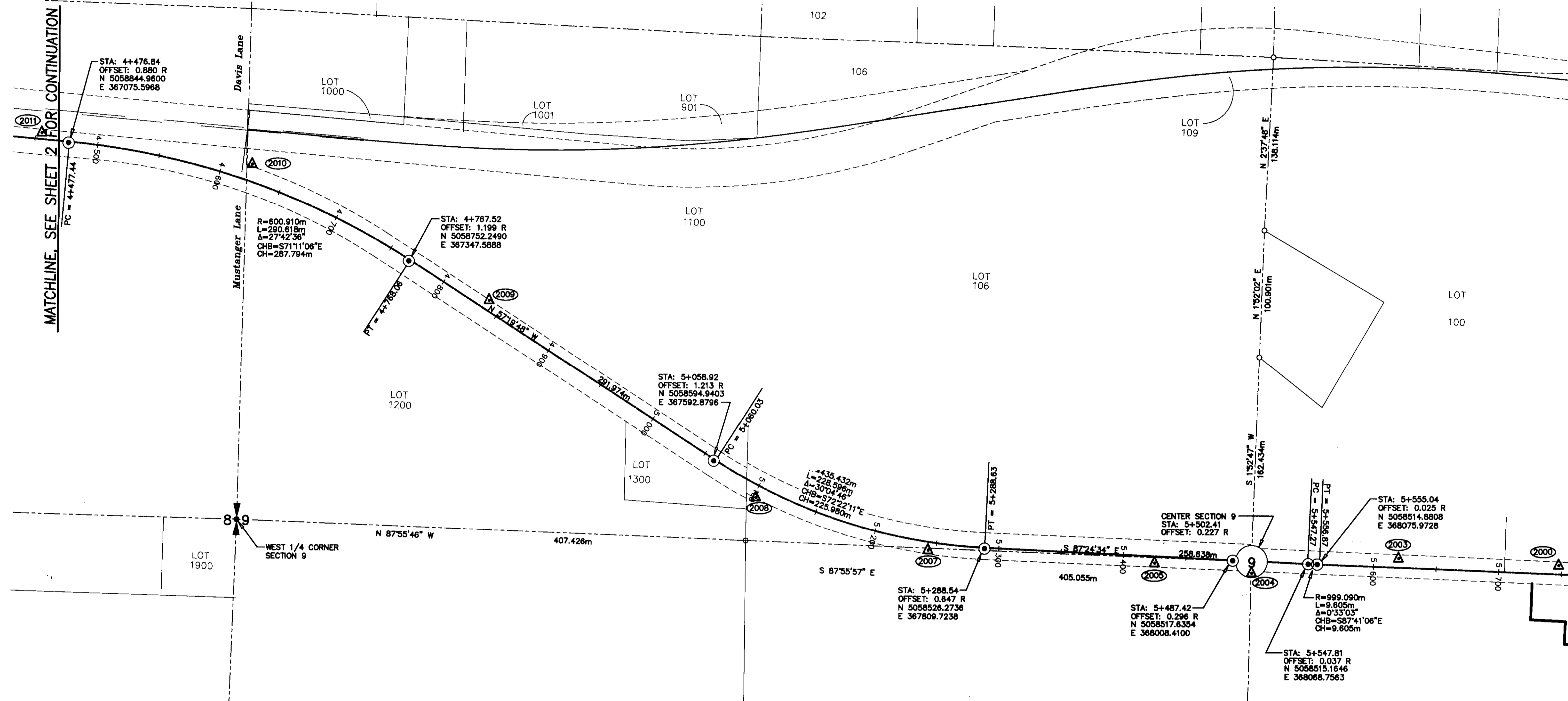
DATE: NOV 1, 2007
SCALE: 1:2000
JOB NO.:
CALC BY:
DRAWN BY:
CHECKED BY:
SHEET 2 OF 3

**UNITED STATES DEPARTMENT OF THE INTERIOR
BUREAU OF INDIAN AFFAIRS
WARM SPRINGS AGENCY
BRANCH OF ROADS
4231 HOLIDAY WAY
WARM SPRINGS, OREGON 97761
PHONE: (541) 553-2423 FAX: (541) 553-6151**

**DWIGHT BARTLESON
LAND SURVEYING
15921 N SYCAMORE ST
MEAD, WA 99021
PH: 509 467-3758**

RECEIVED BY
Umatilla County Survey
12-07

**RECORD OF SURVEY
FOR MISSION HWY (UIR 900)
MONUMENTATION
LOCATED IN PORTIONS OF
SECTIONS 7, 8 AND 9
T. 2 N., R. 33 E., W.M.,
UMATILLA COUNTY, OREGON**



GRAPHIC SCALE

(IN METERS)



1 : 2000

MONUMENT RECOVERY

PT NO	NORTHING	EASTING	DESCRIPTION
2000	5058515.091	368268.946	IRON FOR WITH ALUMINUM CAP
2003	5058519.944	368141.074	IRON FOR WITH ALUMINUM CAP
2004	5058507.422	368023.074	IRON FOR WITH ALUMINUM CAP
2005	5058515.411	367945.958	IRON FOR WITH ALUMINUM CAP
2007	5058524.769	367764.602	IRON FOR WITH ALUMINUM CAP
2008	5058566.094	367626.679	IRON FOR WITH ALUMINUM CAP
2009	5058721.452	367412.197	IRON FOR WITH ALUMINUM CAP
2010	5058828.846	367222.146	IRON FOR WITH ALUMINUM CAP
2011	5058852.954	367054.392	IRON FOR WITH ALUMINUM CAP
2012	5058860.539	366820.206	IRON FOR WITH ALUMINUM CAP

**REGISTERED
PROFESSIONAL
LAND SURVEYOR**
Dwight M. Bartleson
OREGON
DWIGHT M. BARTLESON
 021805.9
 Renewal: 12-31-07

DATE: NOV 1, 2007
 SCALE: 1:2000
 JOB NO.:
 CALC BY:
 DRAWN BY:
 CHECKED BY:
 SHEET **3** OF **3**

UNITED STATES DEPARTMENT OF THE INTERIOR
BUREAU OF INDIAN AFFAIRS
 WARM SPRINGS AGENCY
 BRANCH OF ROADS
 4231 HOLIDAY WAY
 WARM SPRINGS, OREGON 97761
 PHONE: (541) 553-2423 FAX: (541) 553-6151

RECEIVED BY:
 Umatilla County Survey
 Date: 12-07
 By: KK
 07-28-08

DWIGHT BARTLESON
LAND SURVEYING
 15921 N SYCAMORE ST
 MEAD, WA 99021
 PH: 509 467-3758