

UMATILLA COUNTY ROAD DEPARTMENT
CAYUSE-THORNHOLLOW
Scale 1"-400" April 1, 1931

J. M. Schamus
County Judge

R. E. Bean
Commissioner

J. O. Hales
Commissioner

J. H. Scott
Oregon State Market Road Engineer

W. Edinger
Roadmaster

W. Edinger

536100921 Δ 1"33'4"

31510

MENT

QWRR 1 N

30°CL
Δ 55°06'
T 963

□ Cayuse

20°CL
Δ 30°08'
T 774

352+70

Steel Bridge Umatilla River

350+69.3



350+61.5
348+19.1
346+11.2
345+56.3
343+134.6 FT.

339+63 P.C.

20°CR
Δ 73°08'
T 212.5

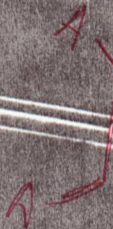
350+56 P.C.
352+80.9 FT.
339+87.0 P.O.T.

8°CR
Δ 175°01'
T 113.2

336+08 P.O.T. Δ 1°33'41"

329+00 P.H.D.
329+50.3 K.

315+09 P.O.T.



370

570+853 FT $\Delta 0^{\circ}12' R$

28' C.L.
 $\Delta 90^{\circ}49'$
T.2075

399+233 PC

402+475 PT.
402+533 POT

405+537 PI $\Delta 0^{\circ}10' R$

20' C.R.
 $\Delta 44^{\circ}11'$
T.1165

418+122 PC

16' C.R.
 $\Delta 38^{\circ}09'$
T.1239

420+183 PT.
421+198 PC
427+37 PT.

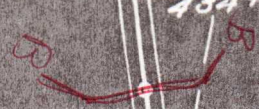
430+448 PC

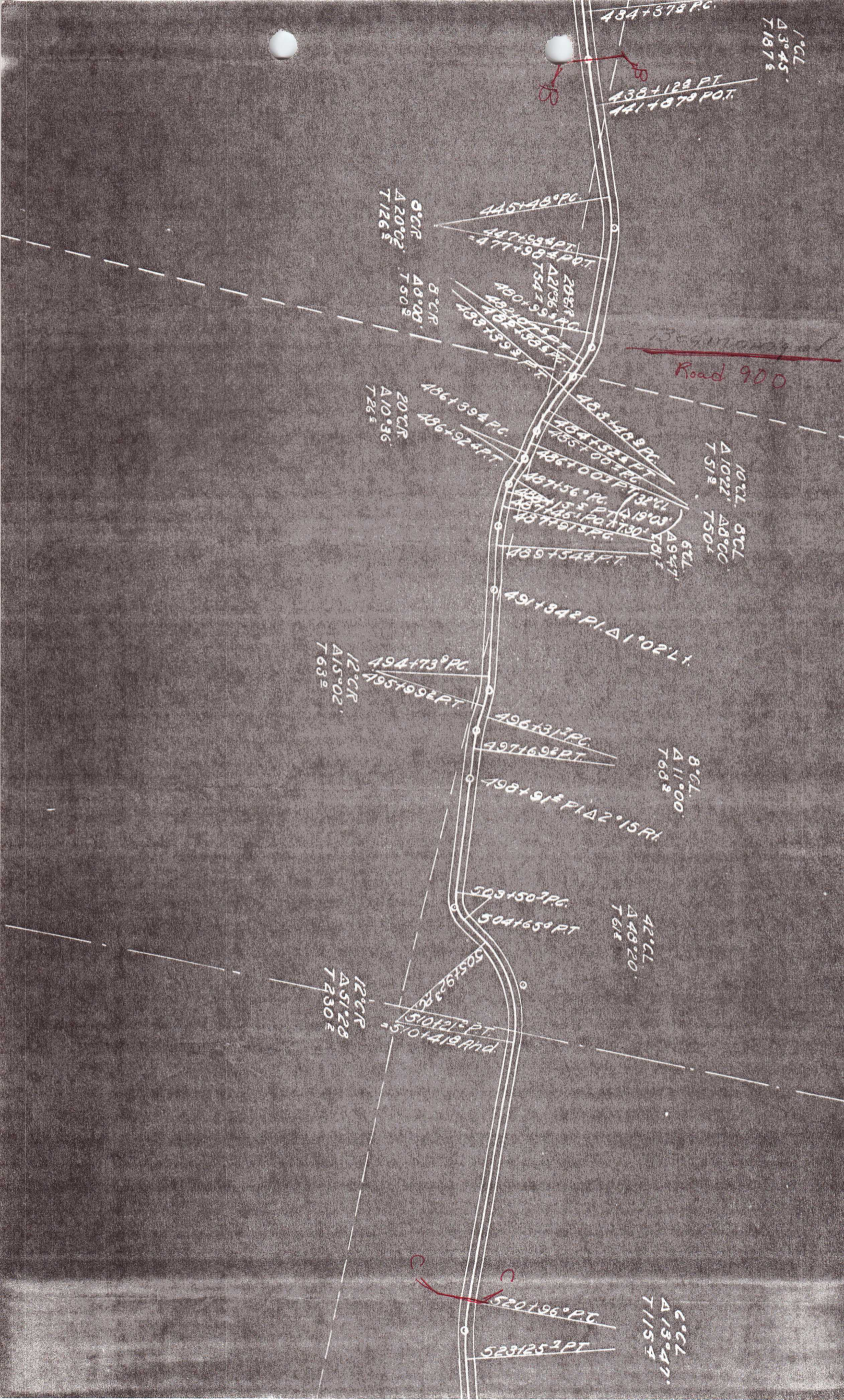
432+99 PT.

434+378 PC

438+128 FT.
441+879 POT

$\Delta 9^{\circ}46'$
T.1224
 $\Delta 3^{\circ}45'$
T.1875





1° C.L.
Δ 3° 45'
T 187.6

434+378 P.C.

438+129 P.T.
441+079 P.O.T.

8° C.L.
Δ 20° 02'
T 126.5

445+48° P.C.

447+584 P.T.
477+984 P.O.T.

8° C.L.
Δ 0° 28'
T 50.2

20° C.L.
Δ 10° 36'
T 26.5

461+394 P.C.

467+924 P.T.

Road 900

10° C.L.
Δ 10° 22'
T 51.2

8° C.L.
Δ 8° 00'
T 50.1

483+448 P.C.

484+524 P.T.

486+003 P.T.

487+56° P.C.

489+154 P.T.

491+342 P.I. Δ 1° 02' L.

12° C.L.
Δ 15° 02'
T 63.9

494+73° P.C.

495+99 P.T.

496+31° P.C.

497+169 P.T.

498+91° P.I. Δ 2° 15' R.

8° C.L.
Δ 11° 00'
T 68.9

503+150° P.C.

504+659 P.T.

42° C.L.
Δ 48° 20'
T 61.4

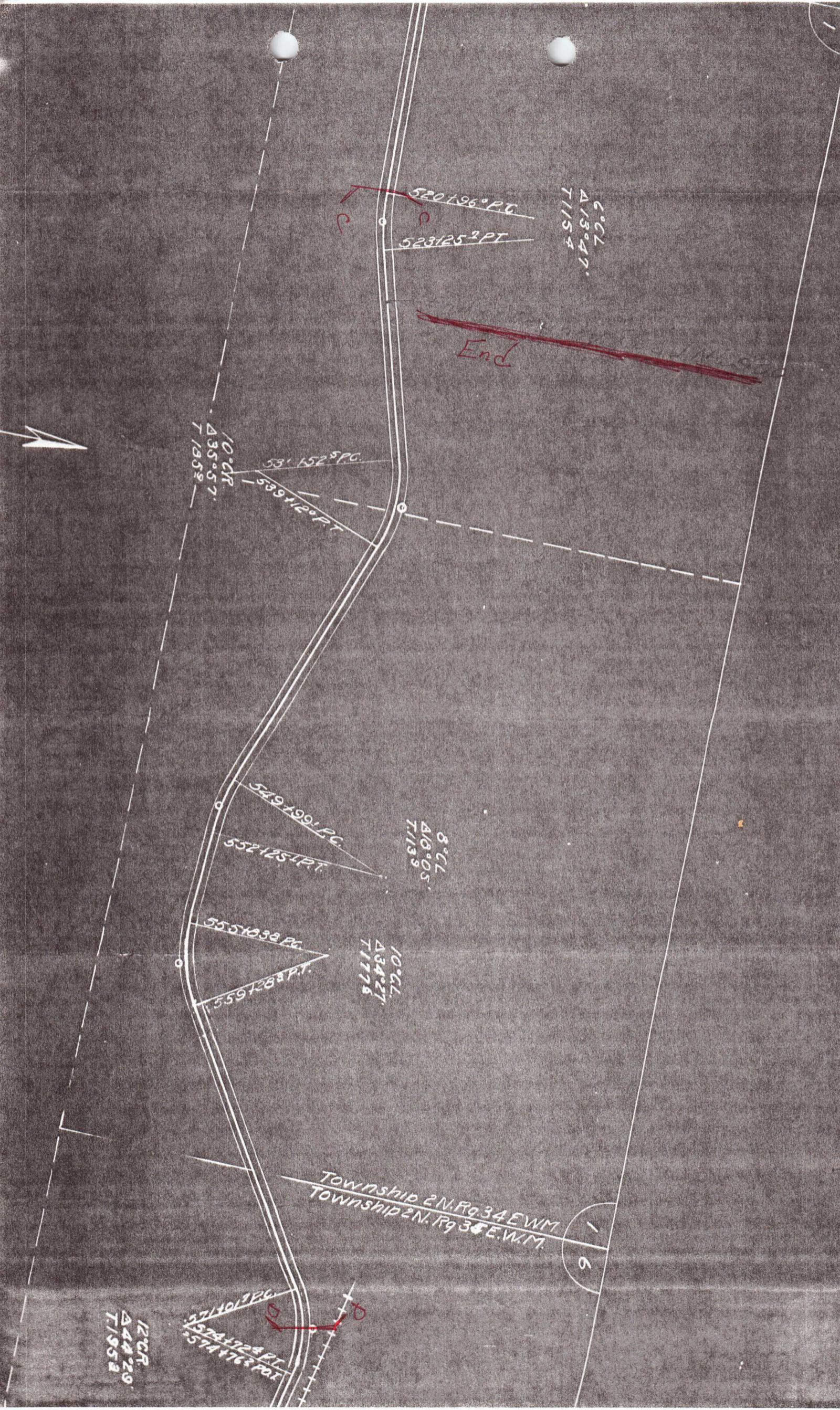
12° C.L.
Δ 51° 28'
T 230.2

510+21° P.T.
510+419 P.O.T.

6° C.L.
Δ 13° 47'
T 115.4

520+196° P.C.

523+25 P.T.



C^oCL
Δ13°47'
T1153

520196° PC
523125° PT

End

10° CR
Δ35°57'
T1959

53°152° PC
539120° PT

8° CL
Δ10°05'
T1139

549199° PC
552125° PT

10° CL
Δ34°27'
T1178

5551038° PC
5591288° PT

Township 2N. R9.34 E.W.M.
Township 2N. R9.34 E.W.M.

16

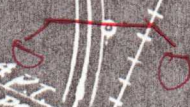
12° CR
Δ44°29'
T1952

571401° PC
5741764° PT



12° CR
Δ 44° 29'
T 1952

571+1017 PC
574+124 PT
574+176 POT



59+775 PC

4° CL
Δ 17° 05'
T 2152

596+045 PT

598+074 PC

56° CL
Δ 88° 00'
T 982

591+629 FT

599+778 PC
601+061 PT
601+04109

56° CR
Δ 72° 11'
T 742

O.W.P.R.+N

4° CR
Δ 13° 05'
T 1642

616+699 PC

619+974 FT
620+005 PC

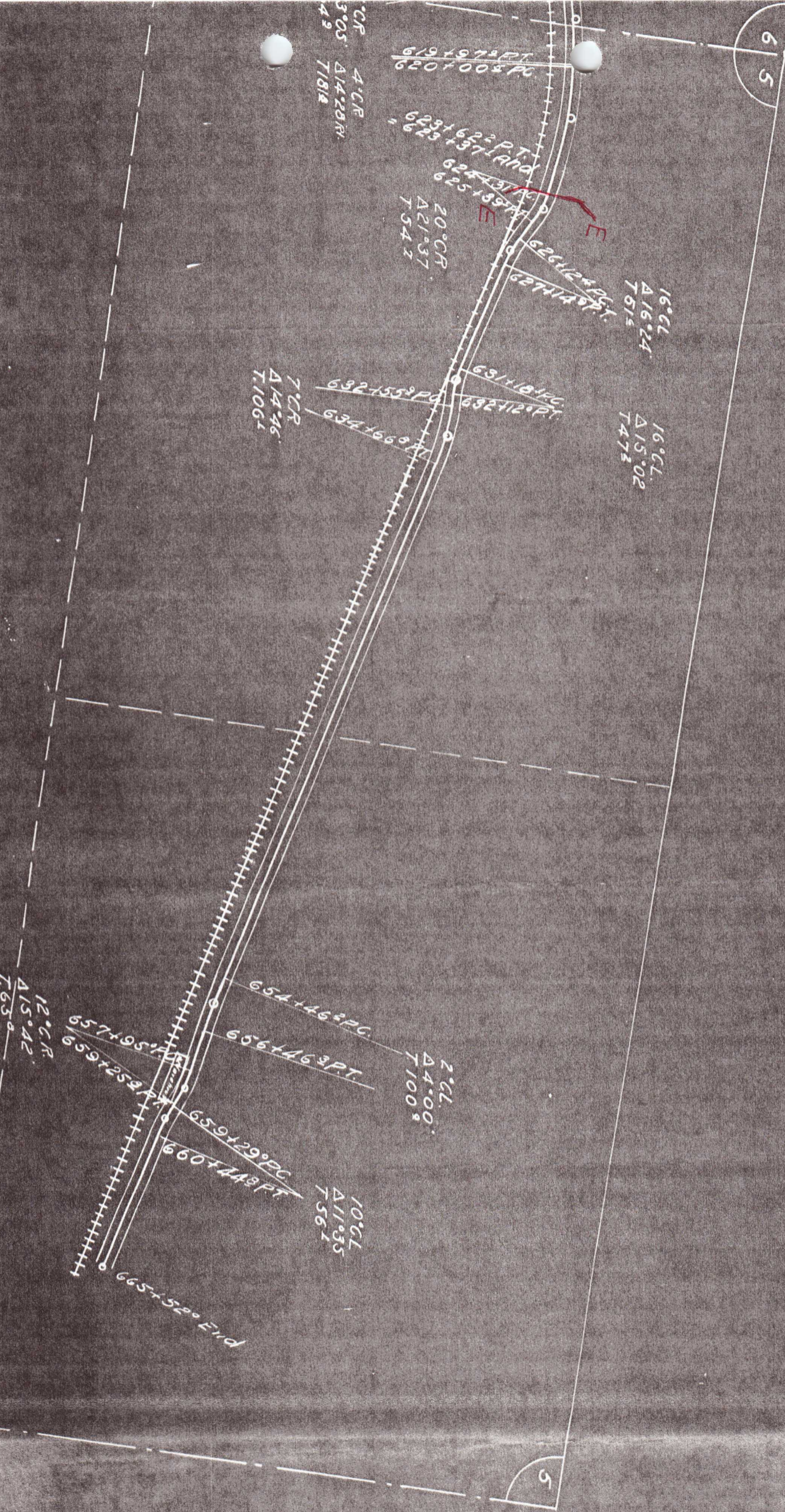
4° CR
Δ 14° 29'
T 1812

623+622 PT
623+371 and
624+314

20° CR
Δ 21° 37'
T 542

625+189 FT
626+124 PC

65



3° CR
Δ14.20' R
7181.2

619+19.75 PT
620+00.5 PC

623+62.2 PT
624+37.1 PVI
625+13.7 PT

20° CR
Δ21.37
T54.2

16° CL
Δ16.24
T51.5

7° CR
Δ14.46
T106.1

632+55.9 PC
634+66.9 PT

16° CL
Δ15.02
T47.2

12° CR
Δ15.42
T63.0

657+95.5 PC
659+25.9 PT

2° CL
Δ4.00
T100.2

654+46.2 PC
656+46.3 PT
659+29.9 PC
660+44.3 PT

10° CL
Δ11.35
T56.1

665+52.0 End

5