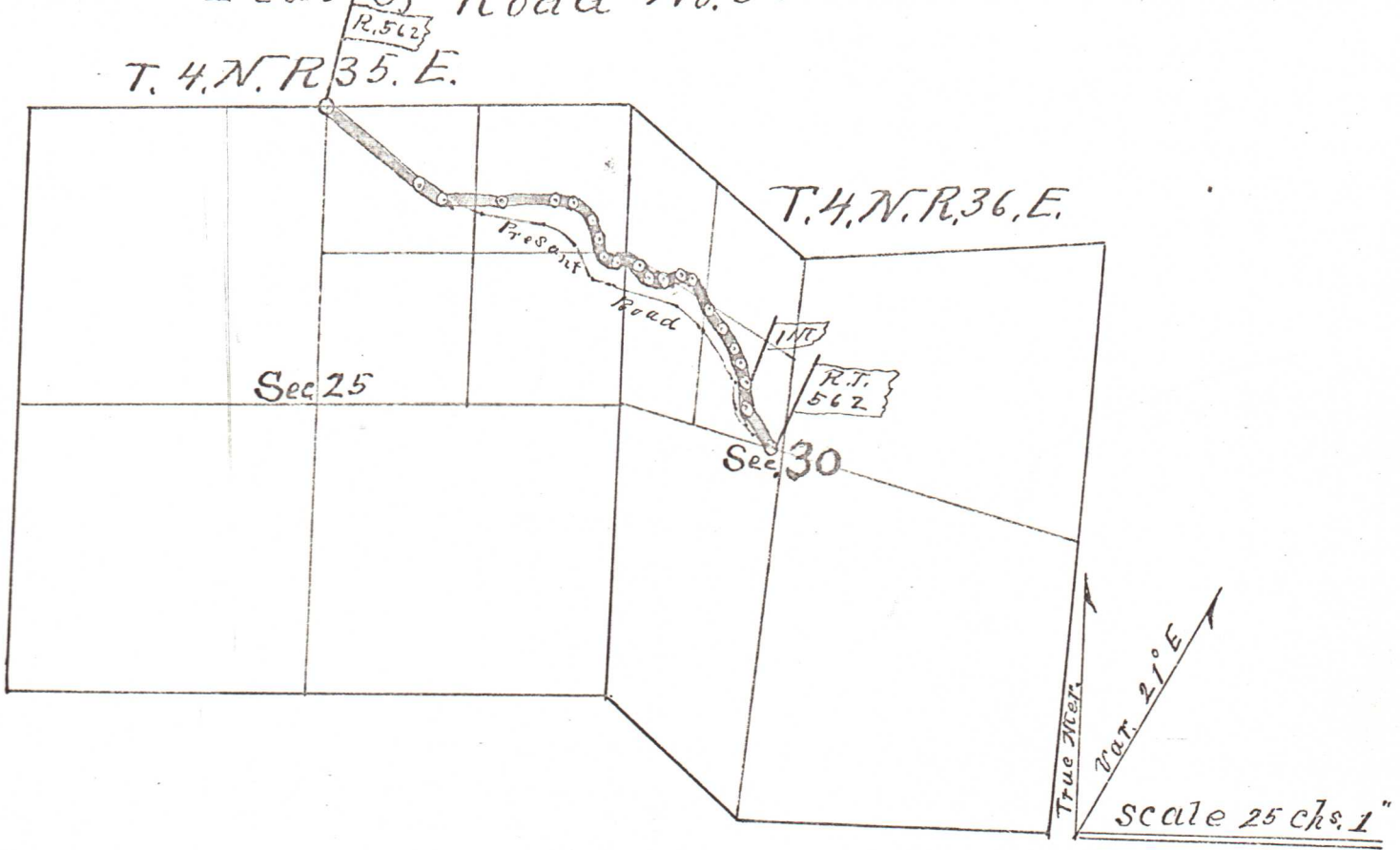


562

Plat of Road No. 562



and
and others,
at the July
Term, 1904, thereof, for a County Road, commencing at the quarter section cor. bet sec 24 & 25
T. 4 N R. 35 E W.M. thence along the present travelled county road. South 51° 35'
East 16.67 chains, thence North 83° 30' East 14.74 chains, thence North 76° 08'
East 3.96 chains, thence South 71° 00' East 2.84 chains, thence South 33° 34'
East 4.55 chains, thence South 11° 36' East 5.28 chains, thence South 91° 36' East 1.75
chains, thence North 85° 38' East 2.23 chains, thence South 44° 56' East 2.89 chs
thence South 83° 31' East 5.99 chains, thence South 48° 32' East 4.20 chs
thence South 41° 30' East 7.17 chains, thence South 39° 59' East 3.70
chains, thence South 15° 00' East 4.27 chains, thence South 10° 47' East
N. 87 chains, thence South 59° 00' East 4.80 chains to intersect the present
travelled road. Said Road to be forty and to vacate that part of old road
between the points where the same road leaves the present travelled road.