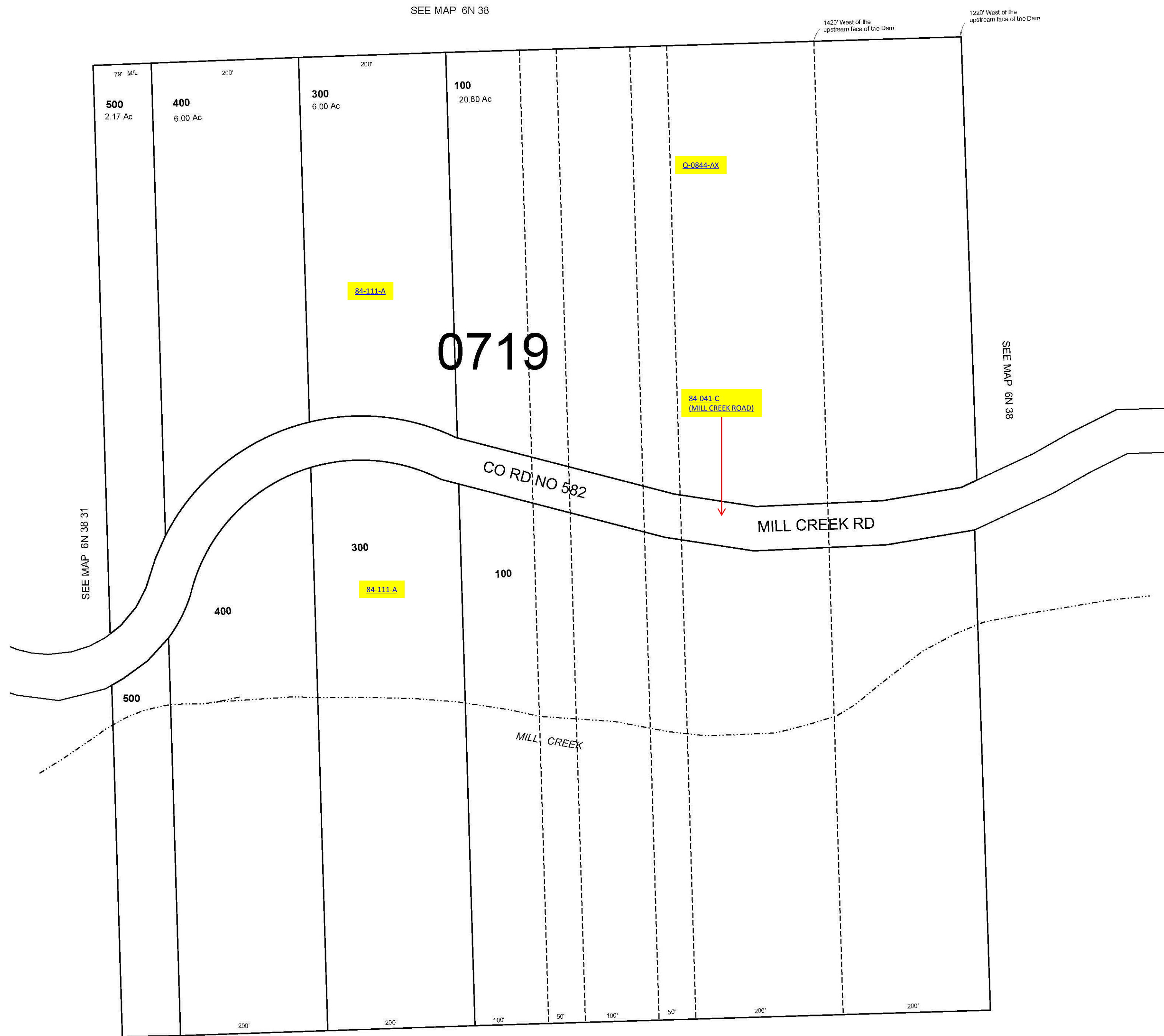


This map was prepared for Assessment & Taxation purposes only and was NOT prepared nor is it suitable for legal, engineering or surveying purposes.

NW 1/4 NW 1/4 SEC 22 T6N R22E WM  
UMATILLA COUNTY  
SCALE 1"=100'

6N3822BB



Revised: 09-08-11

SEE MAP 6N 38

6N3822BB