

Sec. 22 T.6N. R.38E.W.M.
UMATILLA COUNTY
1" = 400'

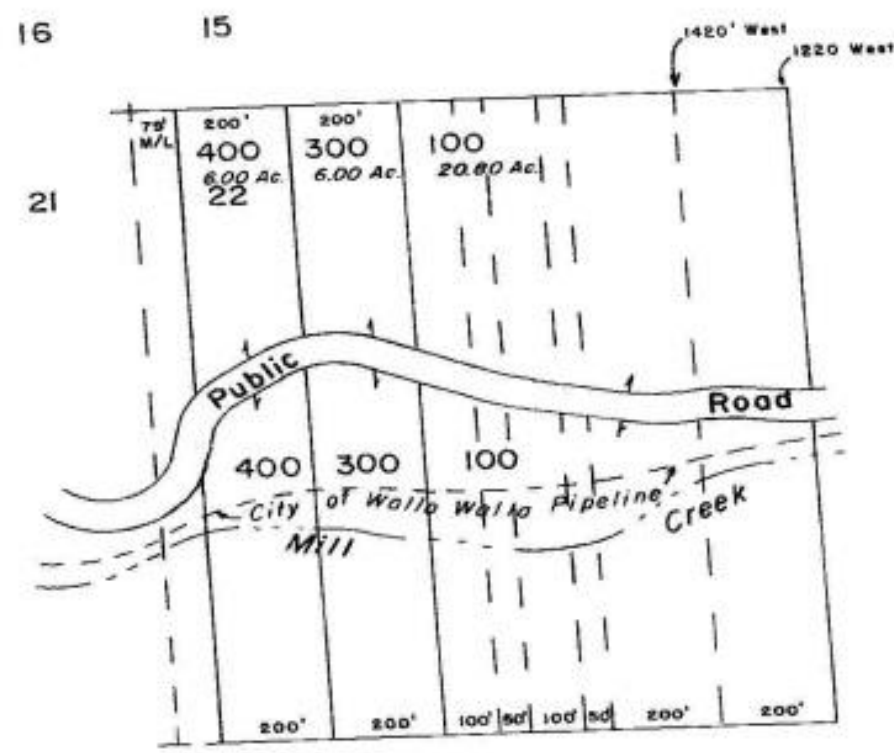
6N 38 22

Aerial Photo No. NZ-6P-02

See Map 6N 38

15 14
22 23

CANCELLED
T.L. 200



7-4

See Map 6N 38 21

1/4 Cor.

1/4 Cor.

See Map 6N 38

See Map 6N 38

21 22
28 27

See Map 6N 38

6N 38 22 22 23
27 26