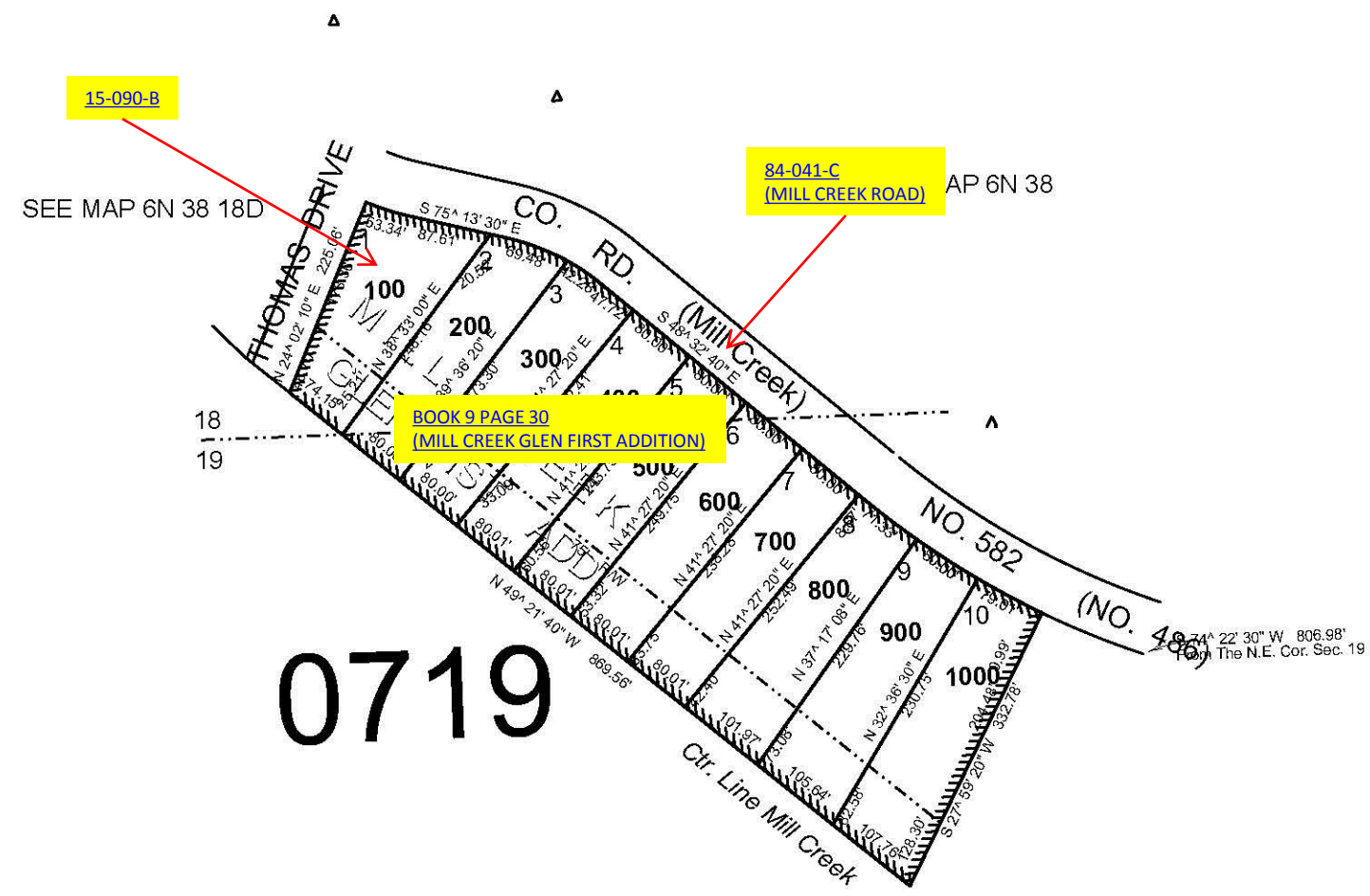


This map was prepared for Assessment & Taxation purposes only and was NOT prepared nor is it suitable for legal, engineering or surveying purposes.

NE1/4 SEC 19 T6N R38E WM  
UMATILLA COUNTY  
SCALE 1"=200'

6N 38 19A  
AERIAL PHOTO NO. NZ 6P-6



SEE MAP 6N 38

SEE MAP 6N 38 20E

SEE MAP 6N 38

Revised: 09-08-11

6N 38 19A