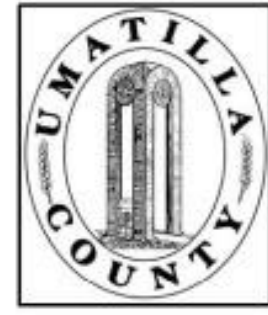


This map was prepared for Assessment & Taxation purposes only and was NOT prepared nor is it suitable for legal, engineering or surveying purposes.



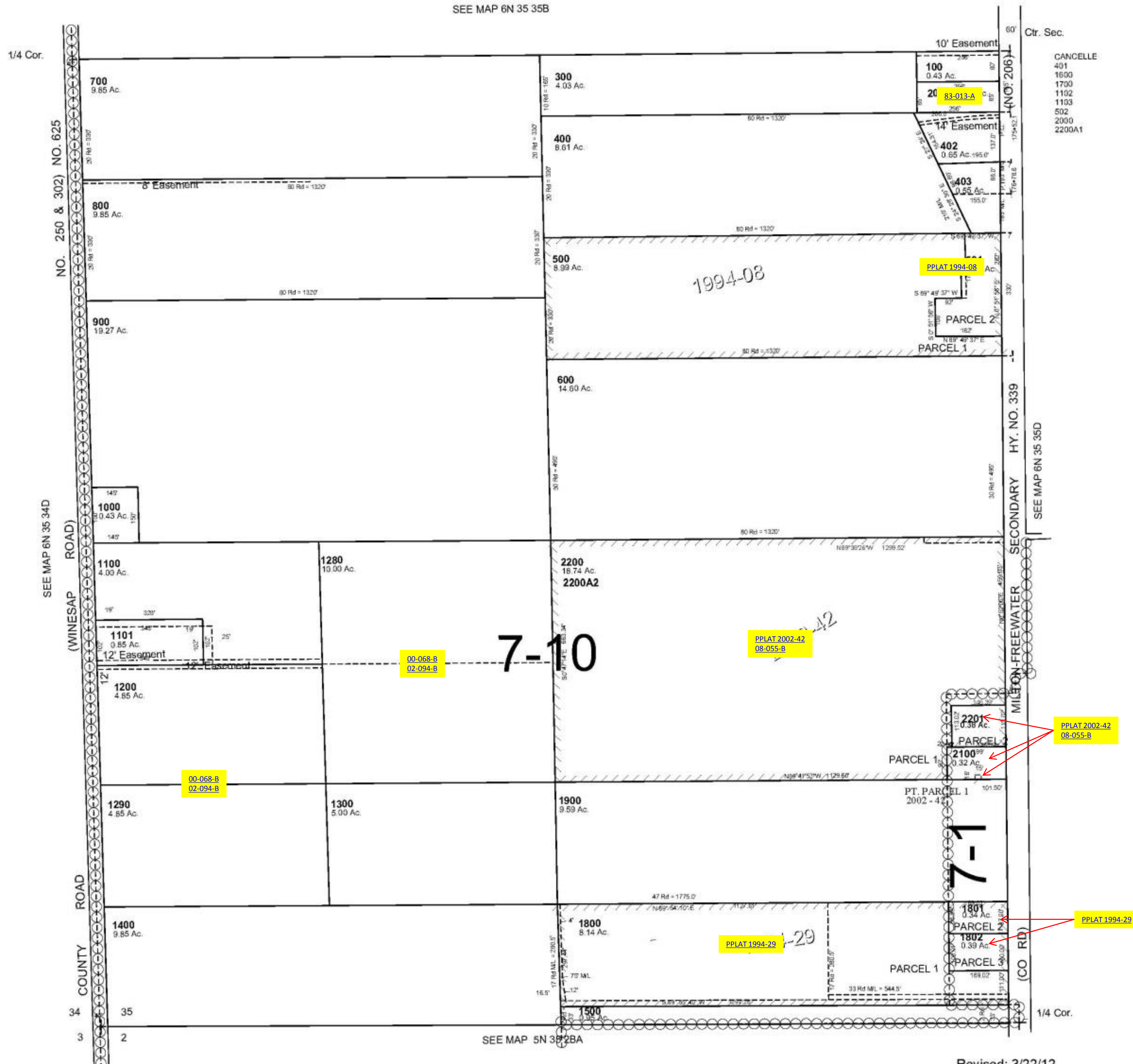
SW 1/4 SEC 35 T6N R35E WM UMATILLA COUNTY

6N3535C

AERIAL PHOTO NO 6P-63

SCALE: 1" = 200'

SEE MAP 6N 35 35B



Revised: 3/22/12

6N3535C