

This map was prepared for Assessment & Taxation purposes only and was NOT prepared nor is it suitable for legal, engineering or surveying purposes.

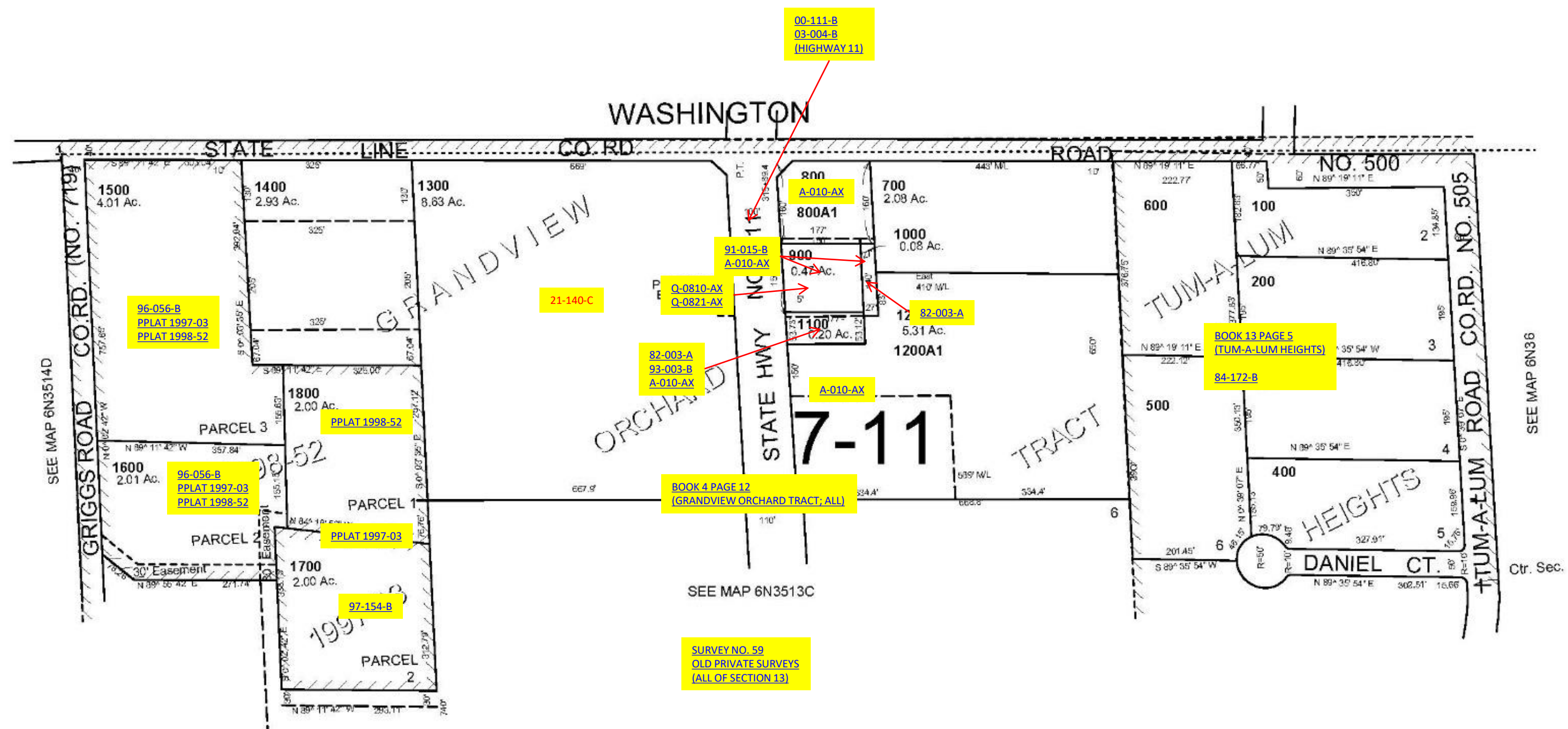


# NW 1/4 SEC 13 T 6N R 35E WM UMATILLA COUNTY

## 6N 35 13B

AERIAL PHOTO NO. NZ-6P-17

SCALE: 1" = 200'



REVISED:05-28-2020

## 6N 35 13B