

ALSO SEE SURVEYS 06-107-B, 07-062-C, 07-063-C, 07-141-B, Q-0814-B, Q-0817-A, S-162-C, 03-023-C, 12-031-C, 12-048-AX, R-0004-B; CORNER RECORDS; G.L.O. SURVEYS

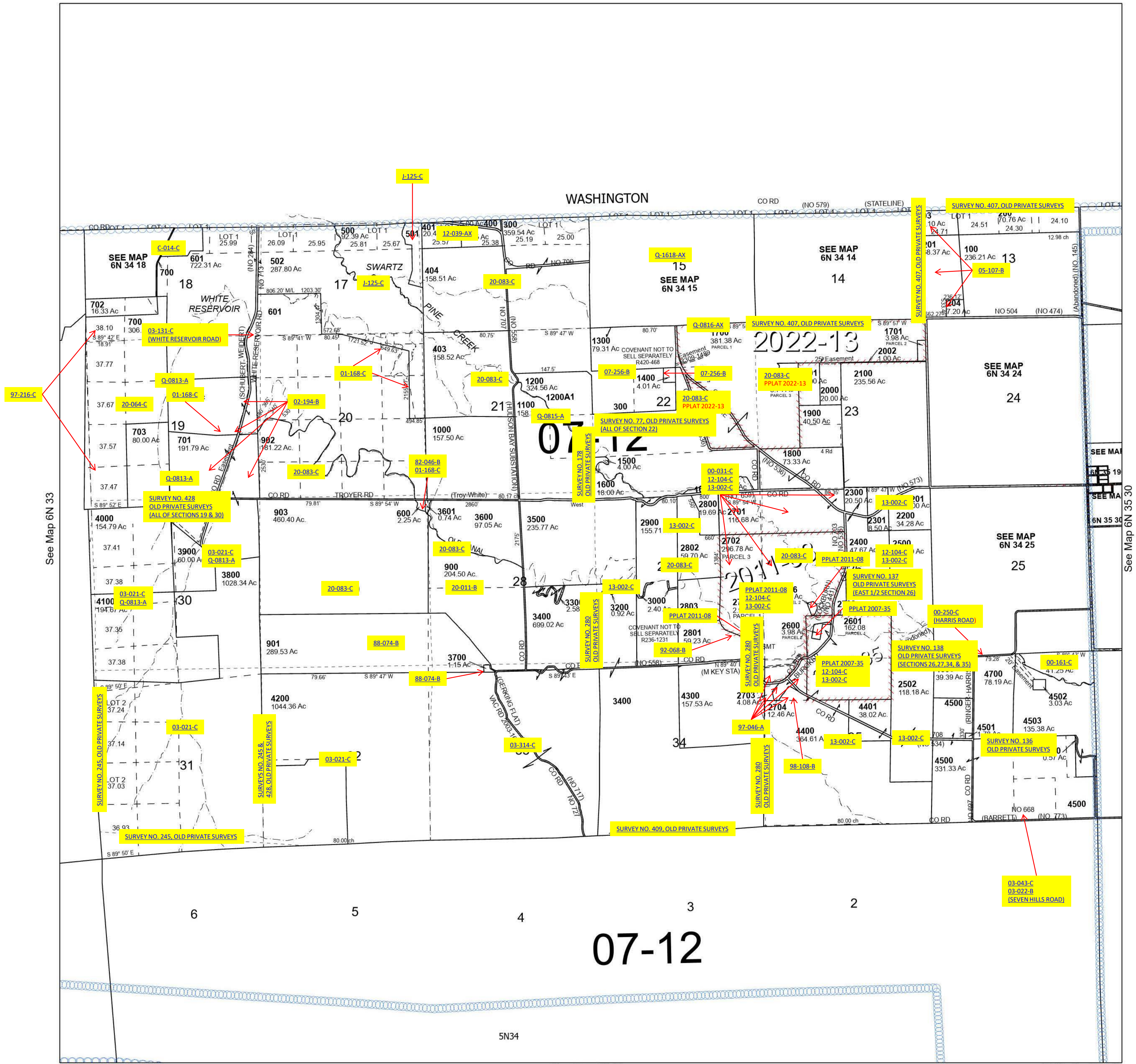
This map was prepared for Assessment & Taxation purposes only and was NOT prepared nor is it suitable for legal, engineering or surveying purposes.

Cancelled Tax Lots  
2590  
2901  
202  
3100  
2804

# T6N R34E WM UMATILLA COUNTY

SCALE 1" = 2,000'

6N 34



Revised 8/14/2023

See Map 5N 34

6N 34