

This map was prepared Assessment & Taxation purposes only and was NOT prepared nor is it suitable for legal, engineering, or surveying purposes.

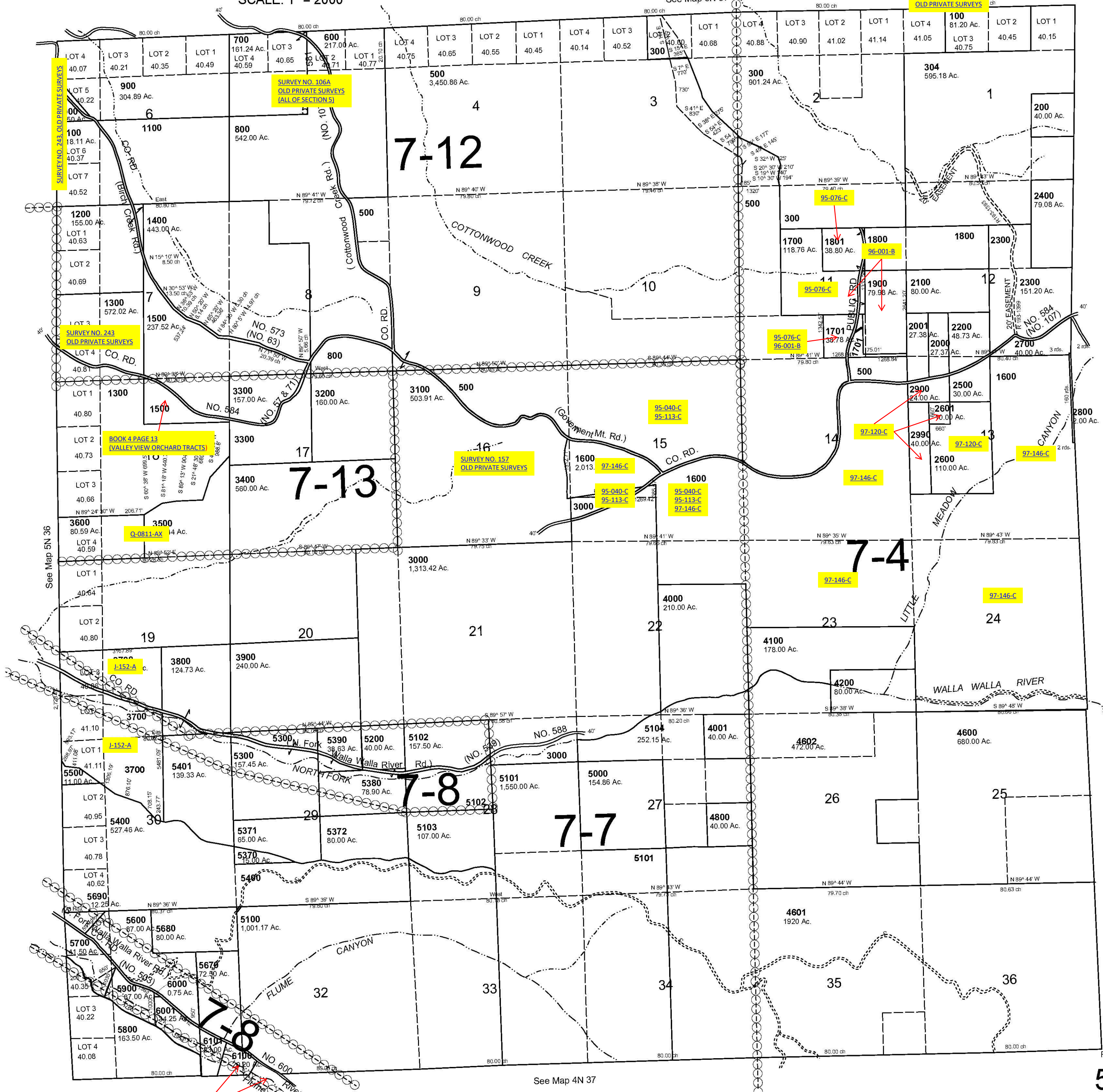
T5N R37E WM UMATILLA COUNTY

5N 37

SCALE: 1" = 2000'

See Map 6N 37

PHOTO NO. 5P 1-11 & 11P 51-74



- Cancelled No
- 301
 - 302
 - 303
 - 400
 - 501
 - 1201
 - 1601
 - 1602
 - 3001
 - 3101
 - 3801
 - 4002
 - 4003
 - 4100
 - 4101
 - 4300
 - 4400
 - 4500
 - 4700
 - 4900
 - 5200
 - 5402
 - 6102

See Map 5N 38

REVISED 03-24-15

5N 37

See Map 4N 37

96-101-C
21-067-B