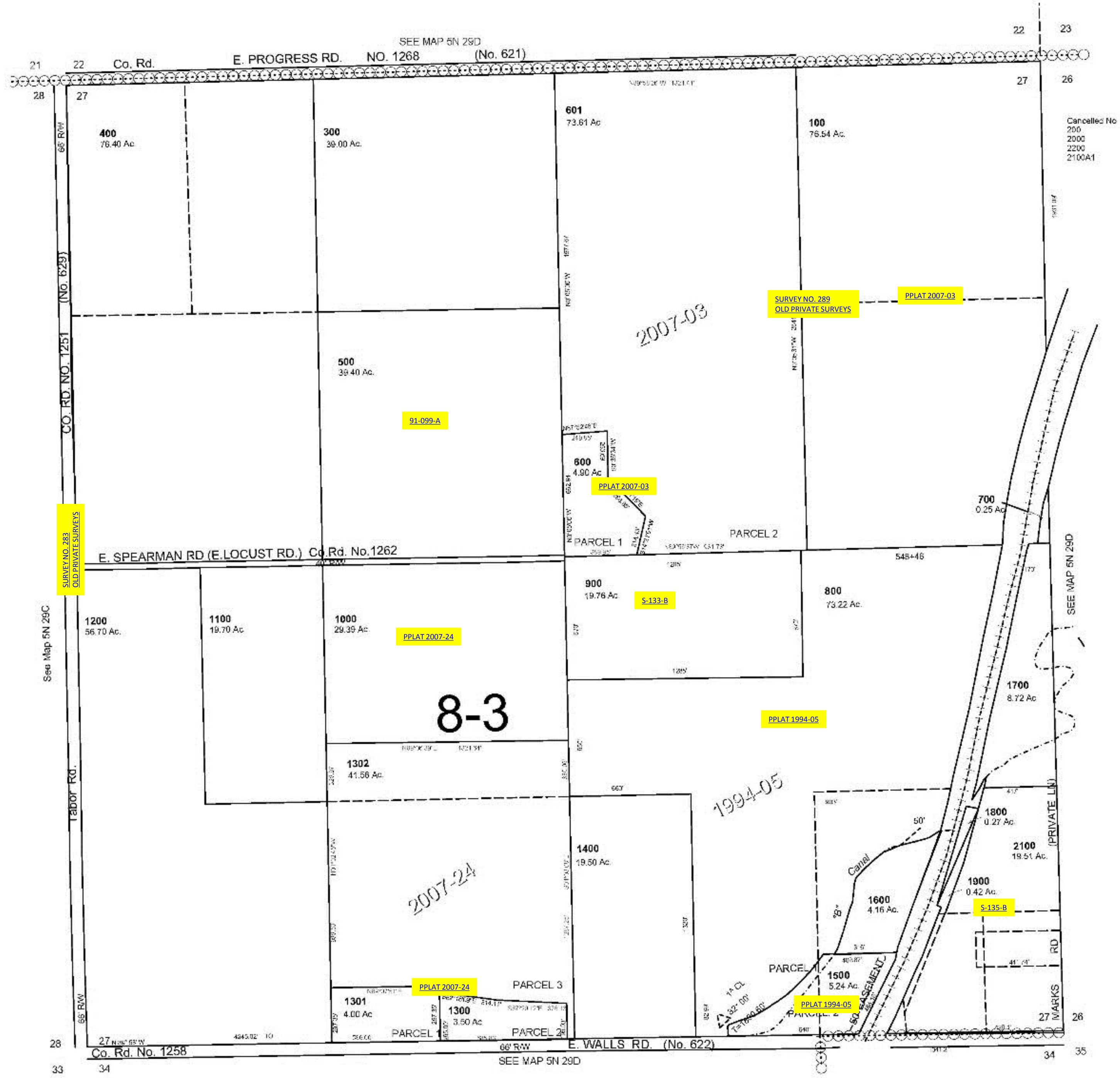


This map was prepared for Assessment & Taxation purposes only and was NOT prepared nor is it suitable for legal, engineering or surveying purposes.

**SEC 27 T5N R29E WM  
UMATILLA COUNTY**  
1"=400'

**5N 29 27**

AERIAL PHOTO NO. 1P 63-67 & 95-99



Revised: 02-21-17

**5N 29 27**