

This map was prepared for Assessment & Taxation purposes only and was NOT prepared nor is it suitable for legal, engineering or surveying purposes.

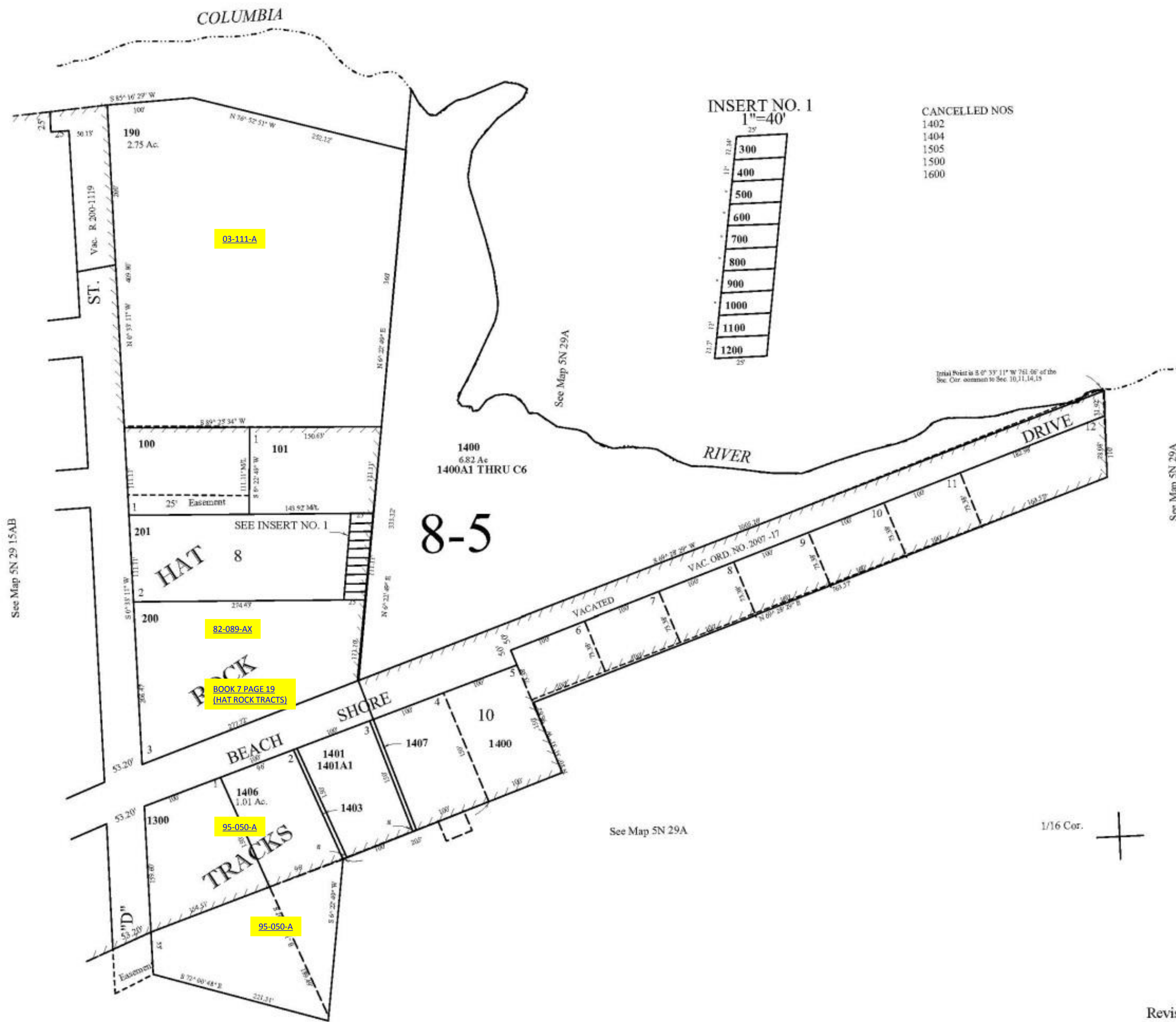


# NE 1/4 NE 1/4 SEC 15 T 5N R 29E WM UMATILLA COUNTY

5N2915AA

Aerial Photo No. NZ-1P-64

SCALE: 1" = 100'



INSERT NO. 1  
1"=40'

300
400
500
600
700
800
900
1000
1100
1200

CANCELLED NOS  
1402  
1404  
1505  
1500  
1600

Total Point is 8° 33' 11" W 751.06' of the Sec. Corner to Sec. 10, 11, 14, 15

See Map 5N 29 15AB

See Map 5N 29A

See Map 5N 29A

See Map 5N 29A

1/16 Cor.

Revised: 11/13/14

5N2915AA