

This map was prepared for Assessment & Taxation purposes only and was NOT prepared nor is it suitable for legal, engineering or surveying purposes.



NE1/4 SEC 36 T5N R28E WM UMATILLA COUNTY

5N2836A

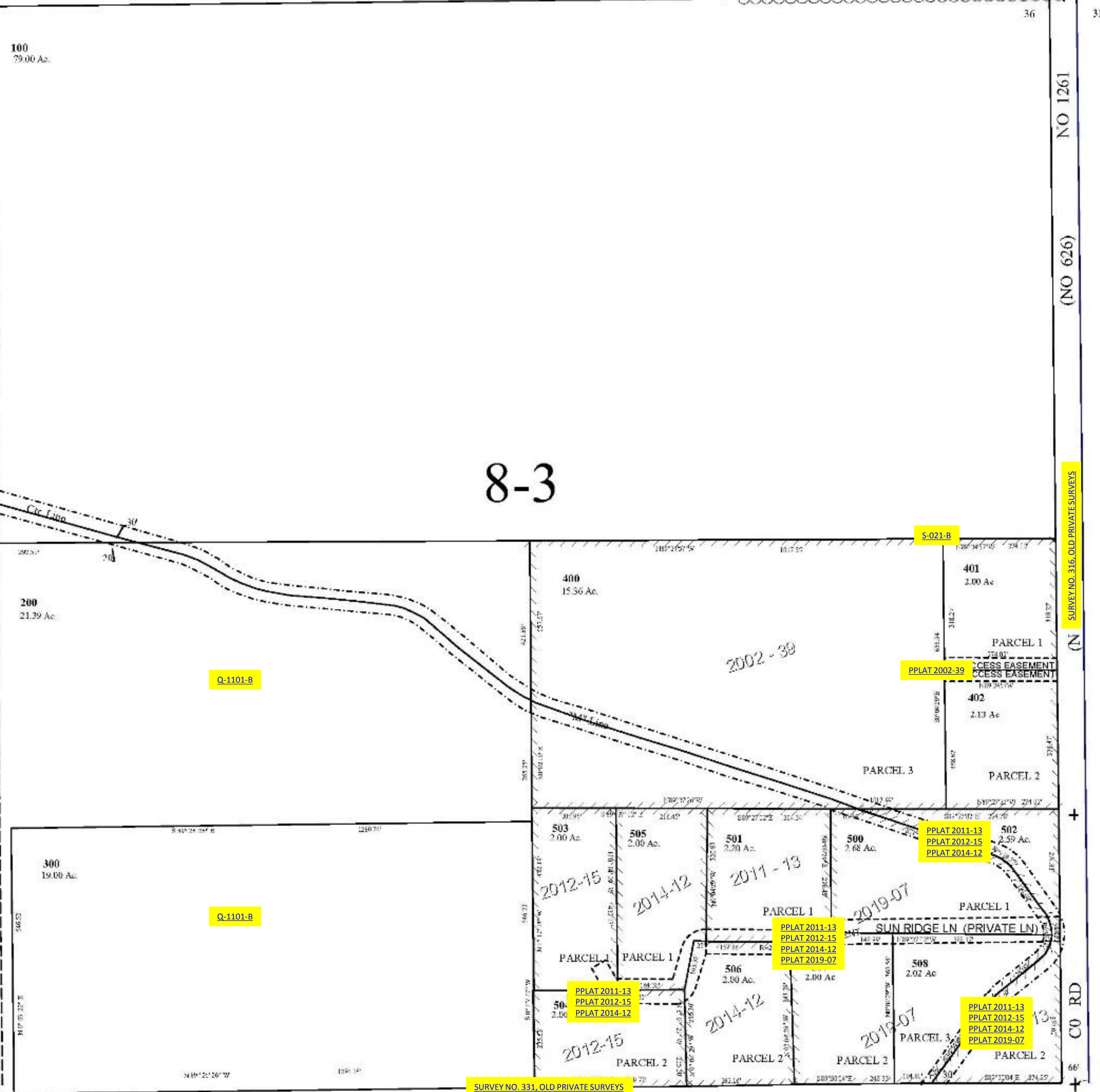
SCALE: 1" = 200

Sec Map 5N 28D

1/4 Cor.

25

30



8-3

NO 1261

(NO 626)

(N) SURVEY NO. 316, OLD PRIVATE SURVEYS

See Map 5N 29 31B

See Map 5N 28 36B

Ctr. Sec.

See Map 5N 28 36D

Revised: 3/13/2019

5N2836A