

ALSO SEE SURVEYS 83-201-B, Q-1126-C, I-016-C, Q-0772-B, Q-1257-B, 04-155-B, 06-461-B, 91-001-B, 98-101-C; CORNER RECORDS; G.L.O. SURVEYS

This map was prepared for Assessment & Taxation purposes only and was NOT prepared nor is it suitable for legal, engineering or surveying purposes.

SEC 18 T5N R28E WM UMATILLA COUNTY

5N 28 18

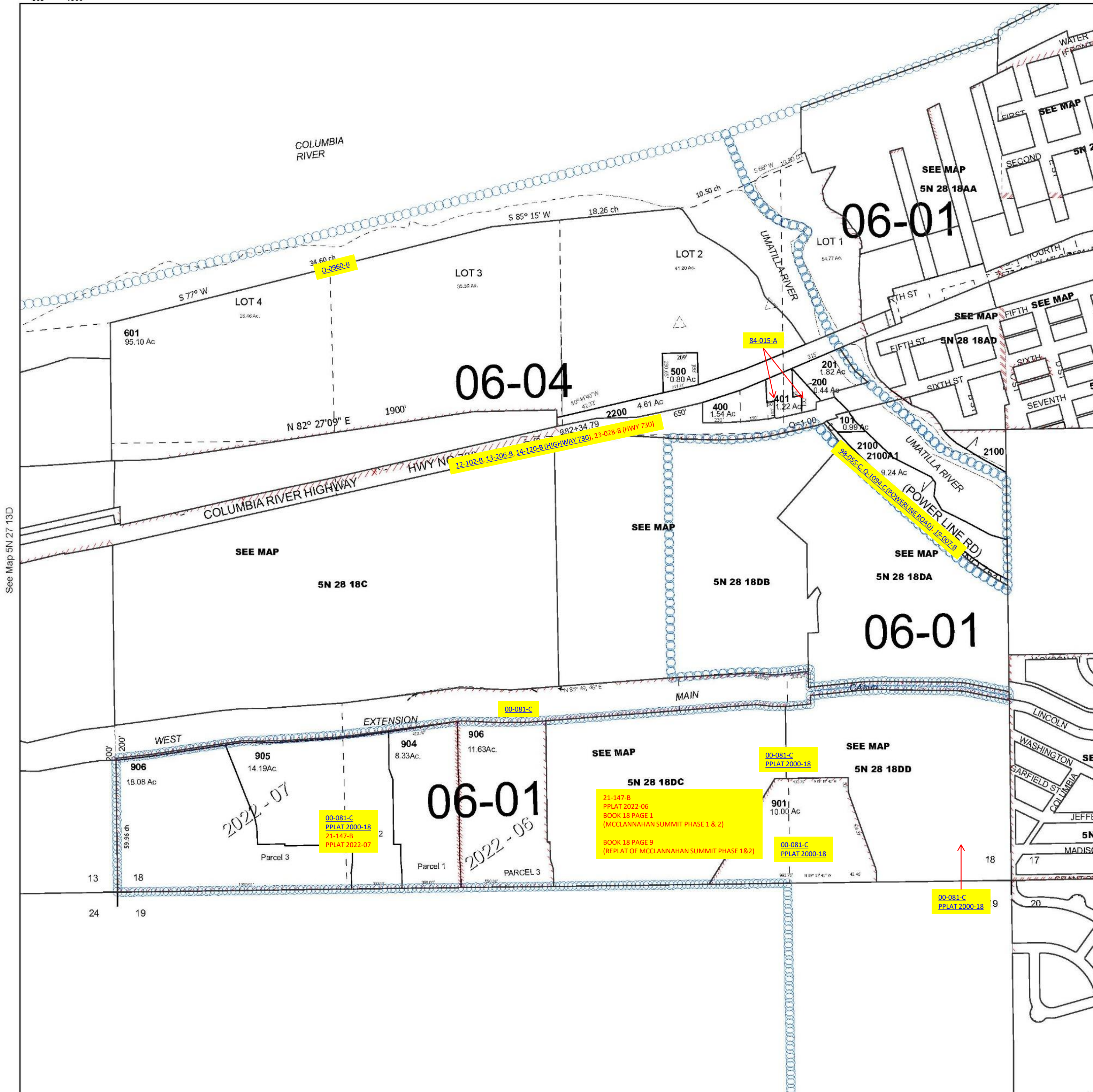
Umatilla

SCALE 1" = 400'

See Map

Cancelled Tax Lots

100	1000	1900-1903
300	1100	2000-2009
600	1200	2101
602-607	1300	
700	1400	
800	1501-1509	
801	1600	
900	1601	
902	1700	
903	1800	



Revised 3/29/2023

See Map 5N 28

5N 28 18