

ALSO SEE SURVEYS 83-201-B, B-017-A, Q-1126-C

This map was prepared for Assessment and Taxation purposes only and has NOT been prepared for legal, engineering or surveying purposes.

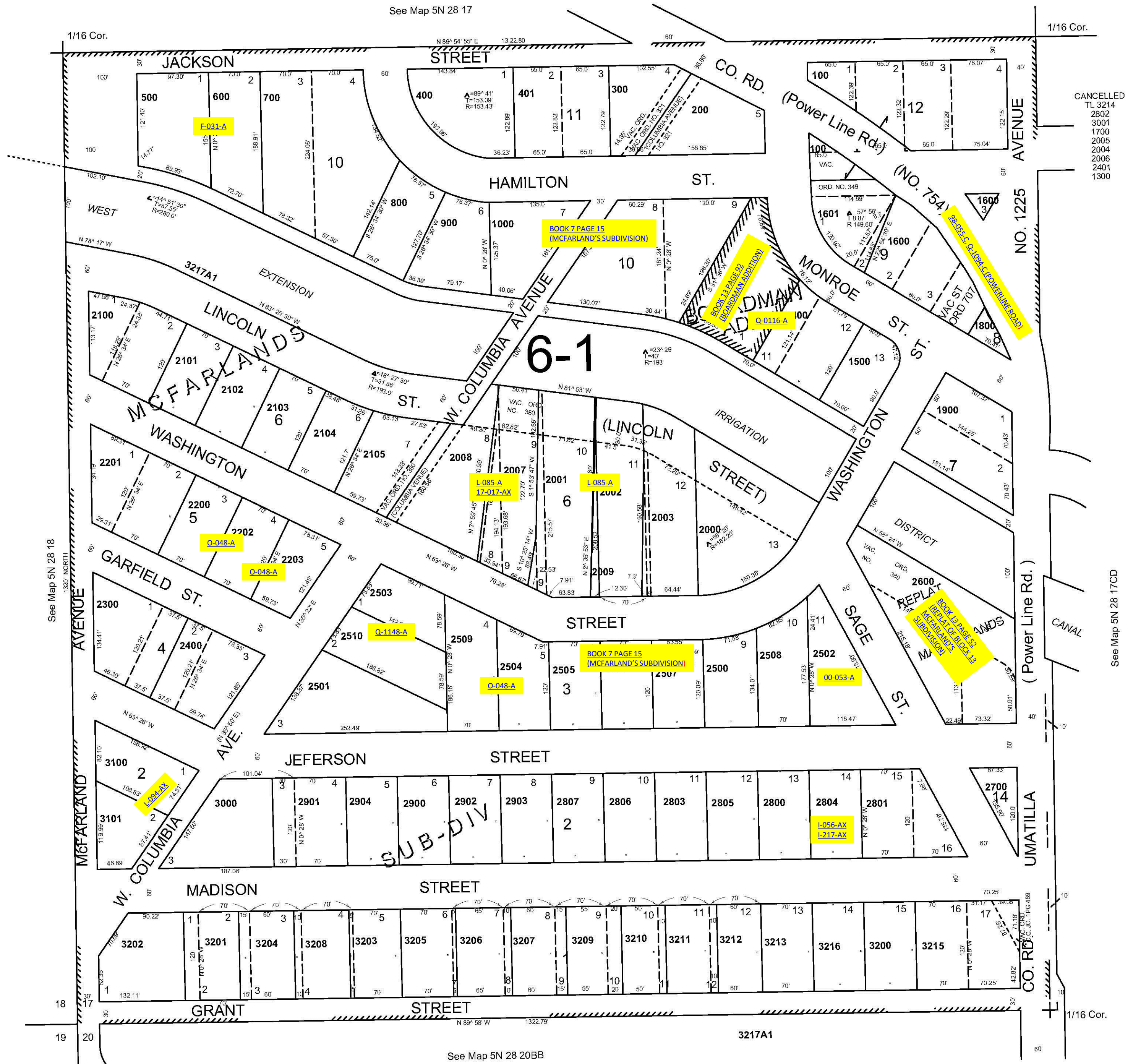
# SW1/4 SW1/4 SEC 17 T5N R28E WM UMATILLA COUNTY

REVISED: 6/24/08

## 5N 28 17CC

AERIAL PHOTO NO. 1P-57

1"=100'



CANCELLED  
TL 3214  
2802  
3001  
1700  
2005  
2004  
2006  
2401  
1300

## 5N 28 17CC