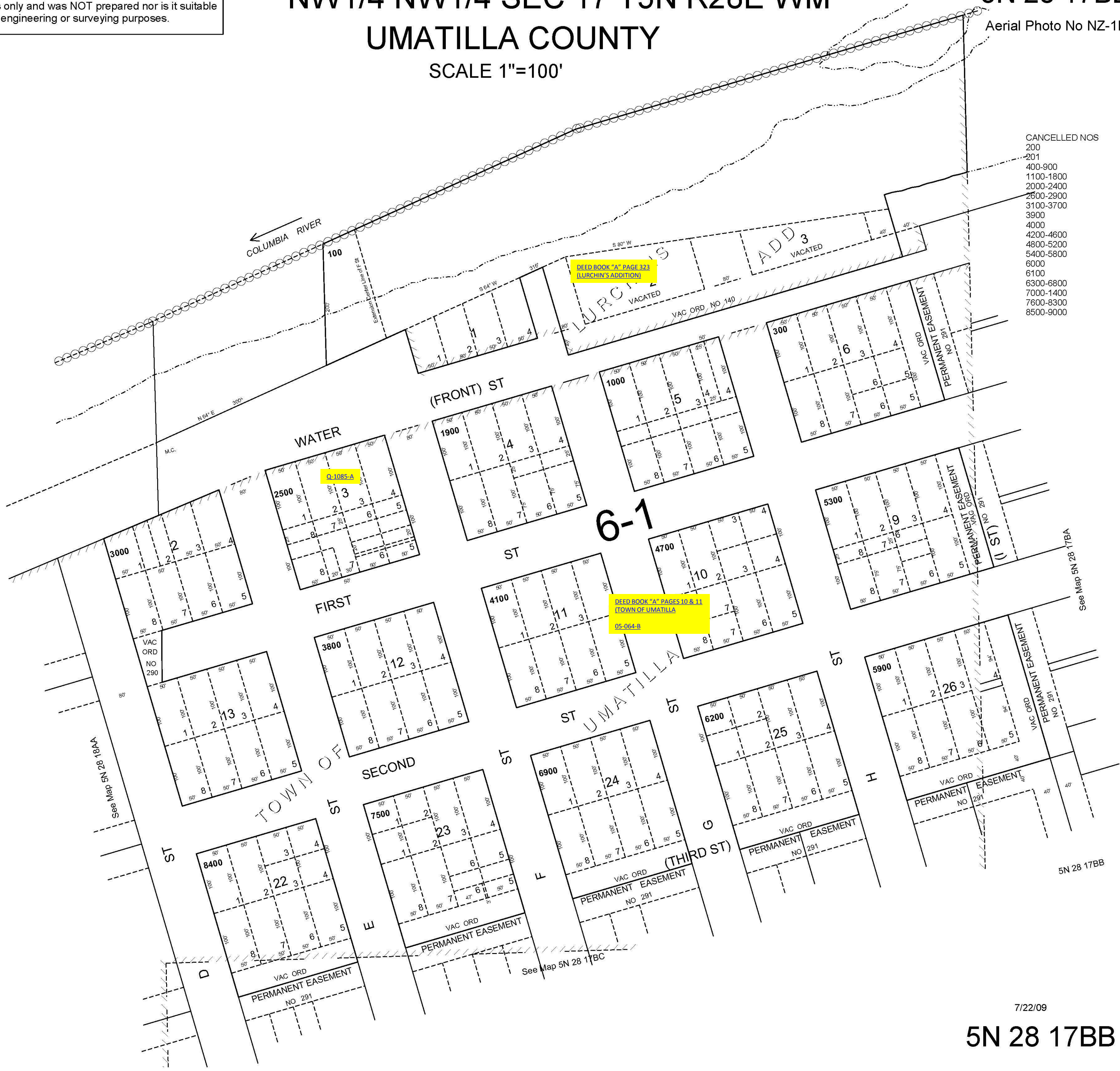


ALSO SEE SURVEYS Q-1126-C, 04-155-B

This map was prepared for Assessment & Taxation purposes only and was NOT prepared nor is it suitable for legal, engineering or surveying purposes.

NW1/4 NW1/4 SEC 17 T5N R28E WM UMATILLA COUNTY SCALE 1"=100'

5N 28 17BB
Aerial Photo No NZ-1P-57



- CANCELLED NOS
- 200
 - 201
 - 400-900
 - 1100-1800
 - 2000-2400
 - 2600-2900
 - 3100-3700
 - 3900
 - 4000
 - 4200-4600
 - 4800-5200
 - 5400-5800
 - 6000
 - 6100
 - 6300-6800
 - 7000-1400
 - 7600-8300
 - 8500-9000

7/22/09

5N 28 17BB