

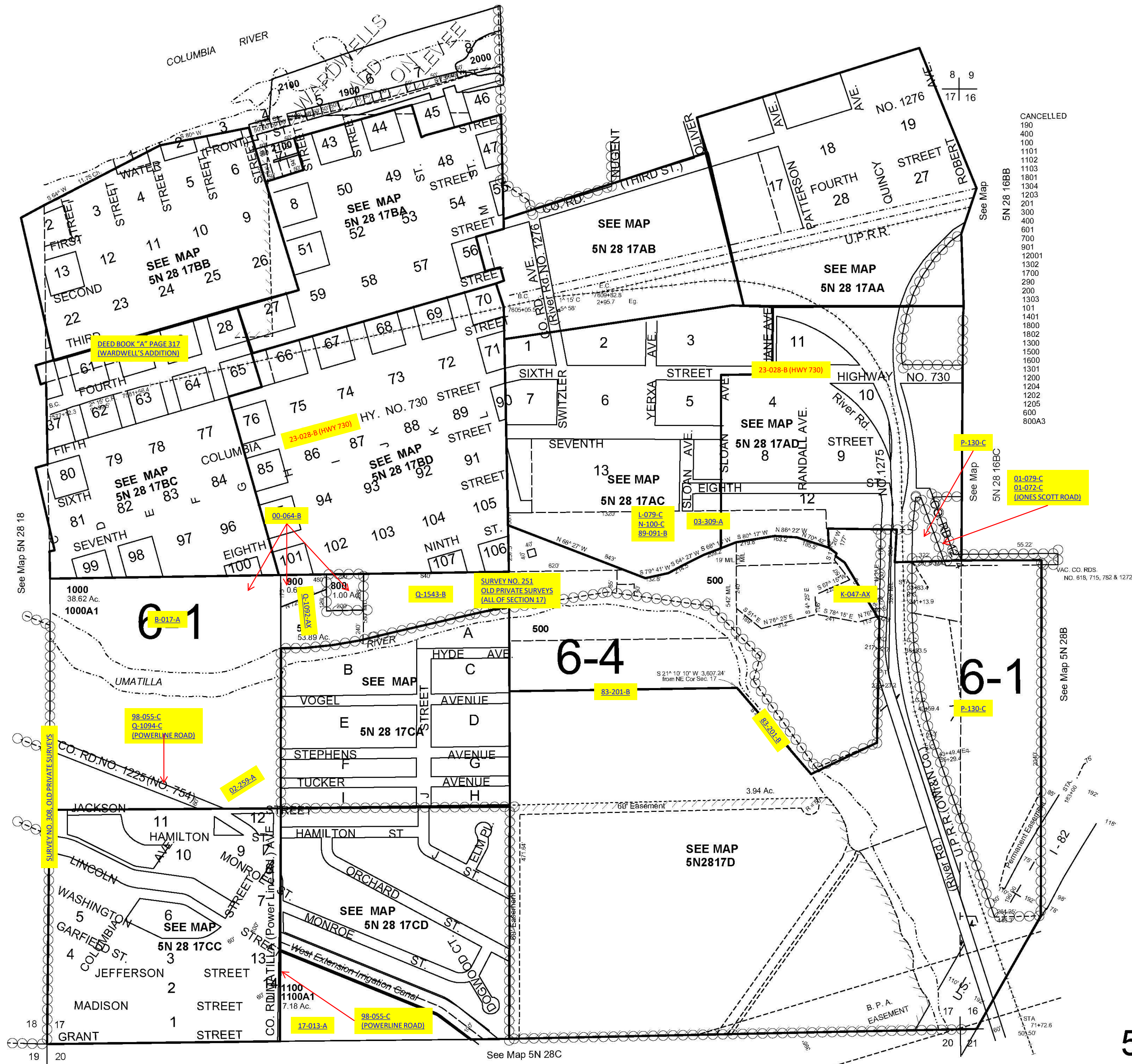
This map was prepared for Assessment & Taxation purposes only and was Not prepared, nor is it suitable for legal, engineering or surveying purposes.

Section 17 T5 N R 28 E WM UMATILLA COUNTY

5N2817

Aerial Photo No. NZ-1P-57

SCALE 1"=400'



- CANCELLED
- 190
- 400
- 100
- 1101
- 1102
- 1103
- 1801
- 1304
- 1203
- 201
- 300
- 400
- 601
- 700
- 901
- 12001
- 1302
- 1700
- 290
- 200
- 1303
- 101
- 1401
- 1800
- 1802
- 1300
- 1500
- 1800
- 1301
- 1200
- 1204
- 1202
- 1205
- 600
- 800A3

Revised:08-07-09

5N2817