

ALSO SEE SURVEYS 04-155-B, Q-1126-C, 04-155-B; SURVEY NO. 33, OLD PRIVATE SURVEYS

This map was prepared for Assessment & Taxation purposes only and was NOT prepared nor is it suitable for legal, engineering or surveying purposes.

SE1/4 NE1/4 SEC 16 T5NR28E WM UMATILLA COUNTY

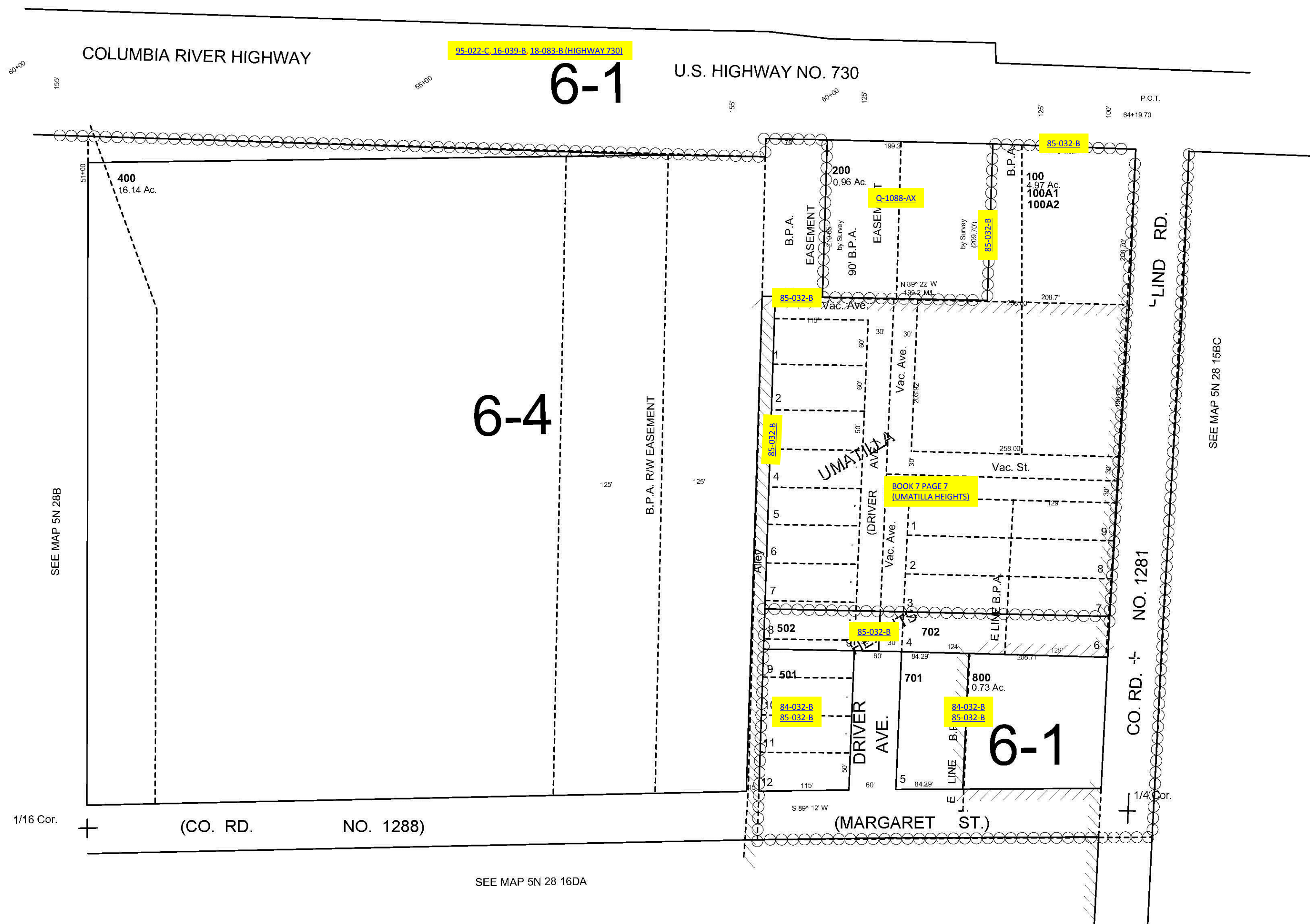
SCALE 1"=100'

5N2816AD

UMATILLA HEIGHTS
BLKS 1-3
Aerial Photo No. NZ-1P-58

CANCELLED
300
500
700
600

SEE MAP 5N 28 16AA



SEE MAP 5N 28B

SEE MAP 5N 28 15BC

SEE MAP 5N 28 16DA

Revised: 7/12/11

5N2816AD