

ALSO SEE SURVEYS 92-134-B, Q-1126-C, 02-019-G, 03-140-B, 04-155-B, 07-074-C, 88-045-C, 98-101-C; CORNER RECORDS; G.L.O. SURVEYS

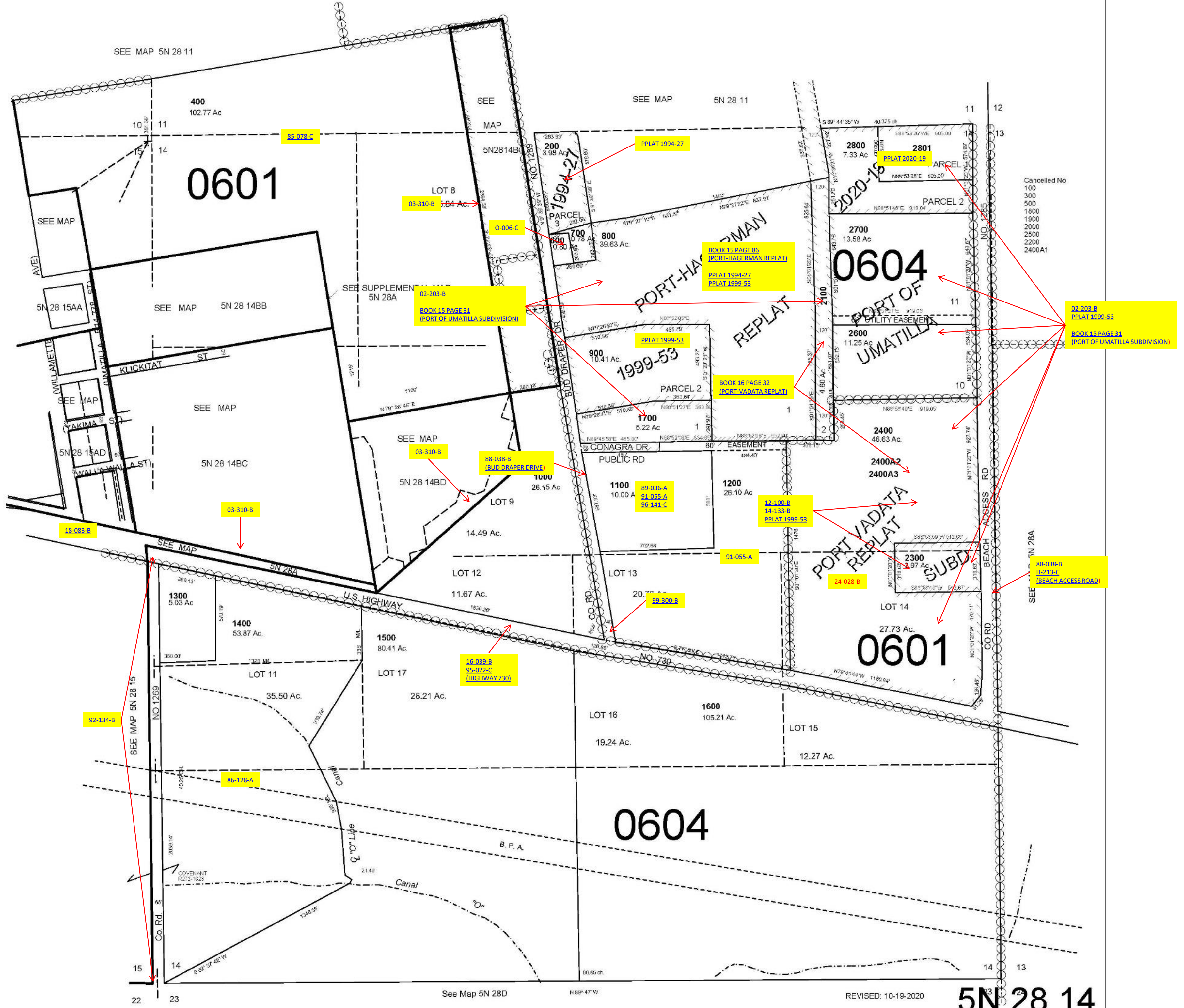
This map was prepared for Assessment & Taxation purposes only and was NOT prepared nor is it suitable for legal, engineering or surveying.

1"=400'

SEC 14 T5N R28E WM UMATILLA COUNTY

5N 28 14

AERIAL PHOTO NO. NZ 1P 58-60 & 102-103



Cancelled No
 100
 300
 500
 1800
 1900
 2000
 2500
 2200
 2400A1