

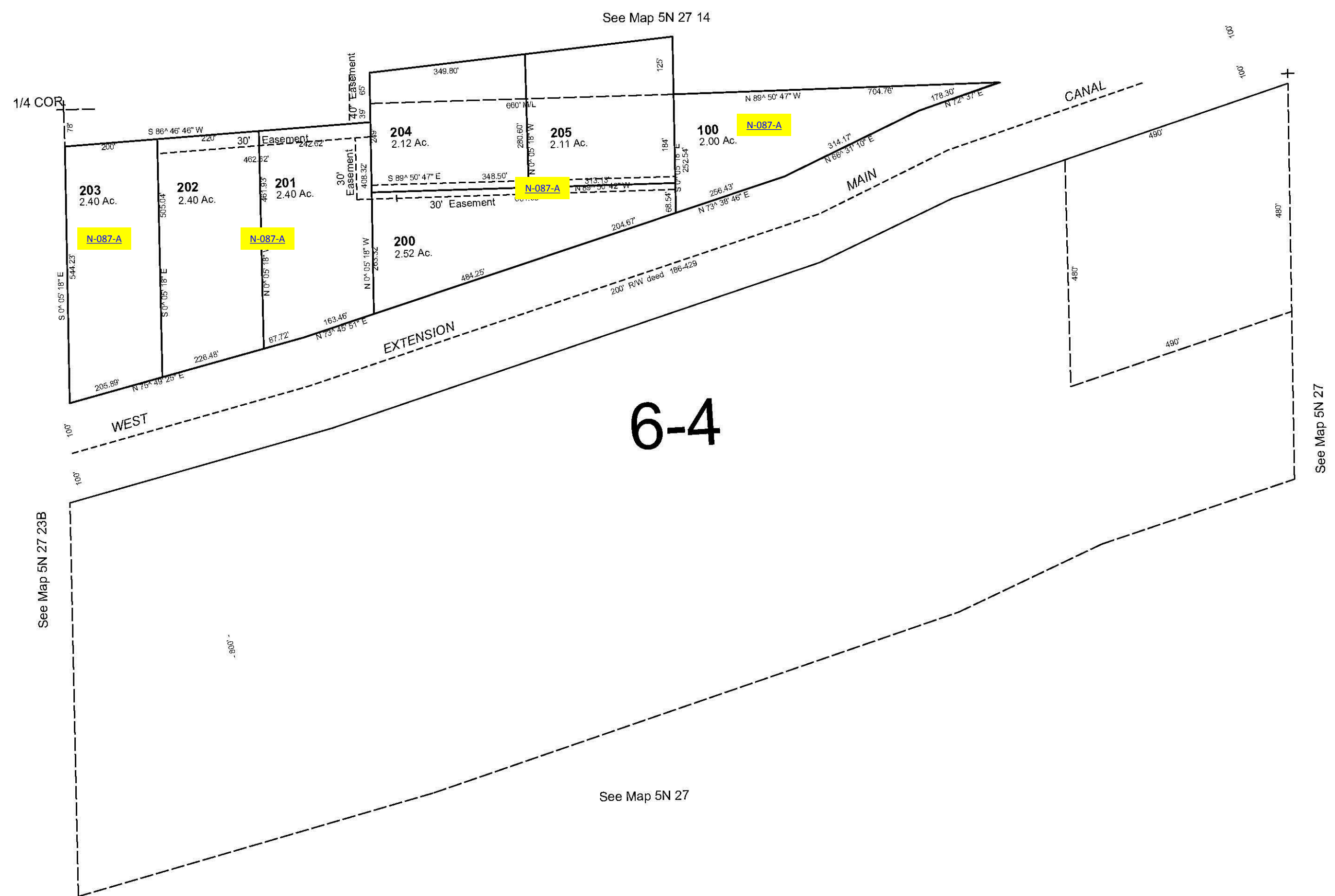
ALSO SEE SURVEYS Q-1125-C, 06-461-B, 91-001-B, I-016-C; CORNER RECORDS; G.L.O. SURVEYS

This map was prepared
for assessment purposes

NE1/4 SEC 23 T5N R27E WM
UMATILLA COUNTY
SCALE 1"=200'

9/25/06

5N 27 23A
AERIAL PHOTO NO 1P-54



5N 27 23A