

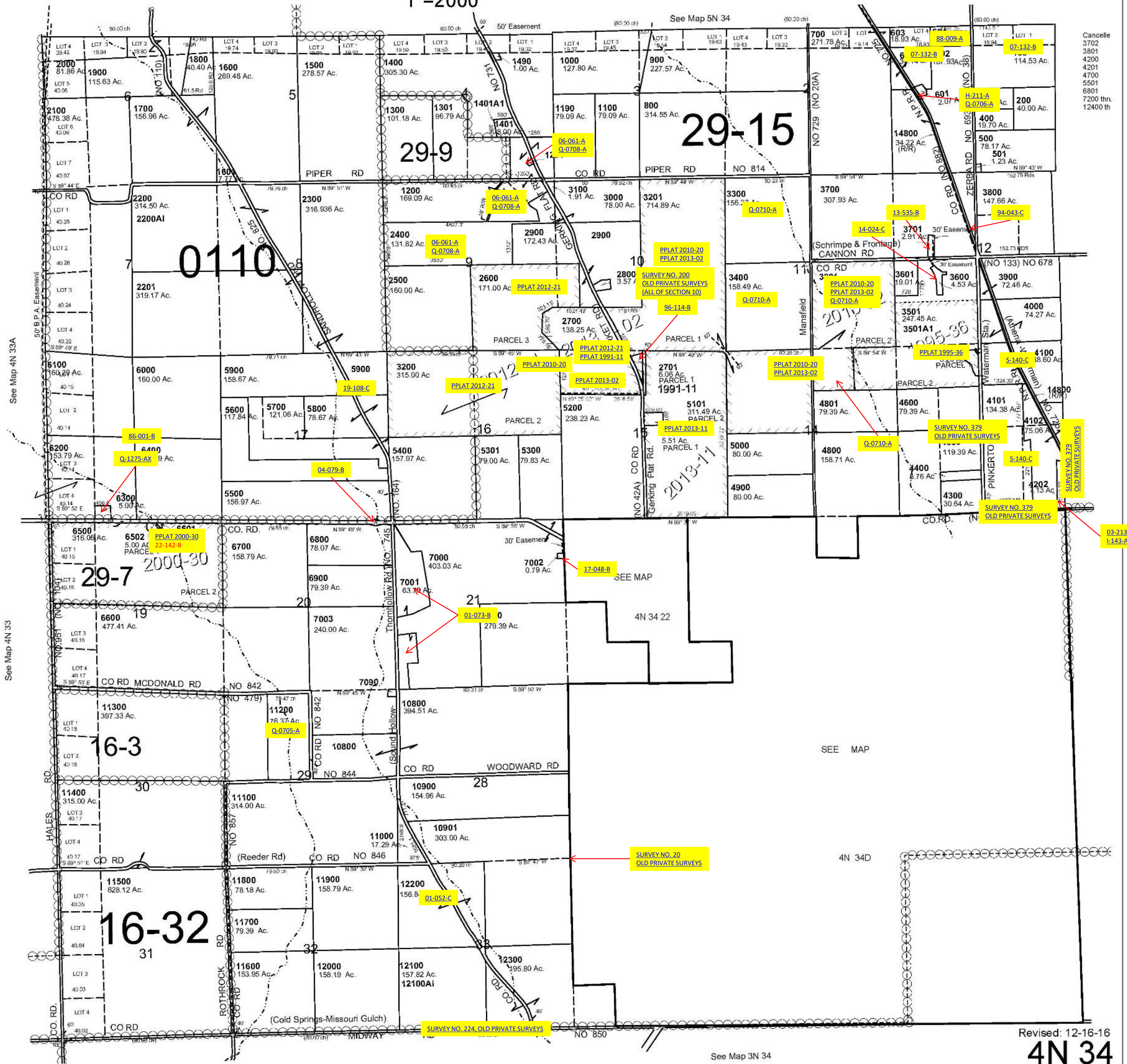
This map was prepared for Assessment & Taxation purposes only and was NOT prepared nor is it suitable for legal, engineering or surveying purposes.

T4N R34E WM UMATILLA COUNTY

4N 34

AERIAL PHOTO NO. NZ-5P 54-60, 100-105, 132-136

1"=2000'



Cancelled
 3702
 3801
 4200
 4201
 4700
 5501
 6801
 7200 thru
 12400 thru

Revised: 12-16-16

4N 34