

ALSO SEE SURVEYS 05-085-B, 11-177-B, 11-179-A, Q-0045-B

This map was prepared for Assessment & Taxation purposes only and was NOT prepared nor is it suitable for legal, engineering or surveying purposes.

SW 1/4 SE 1/4 SEC 32 T4N R29E WM UMATILLA COUNTY

Stanfield

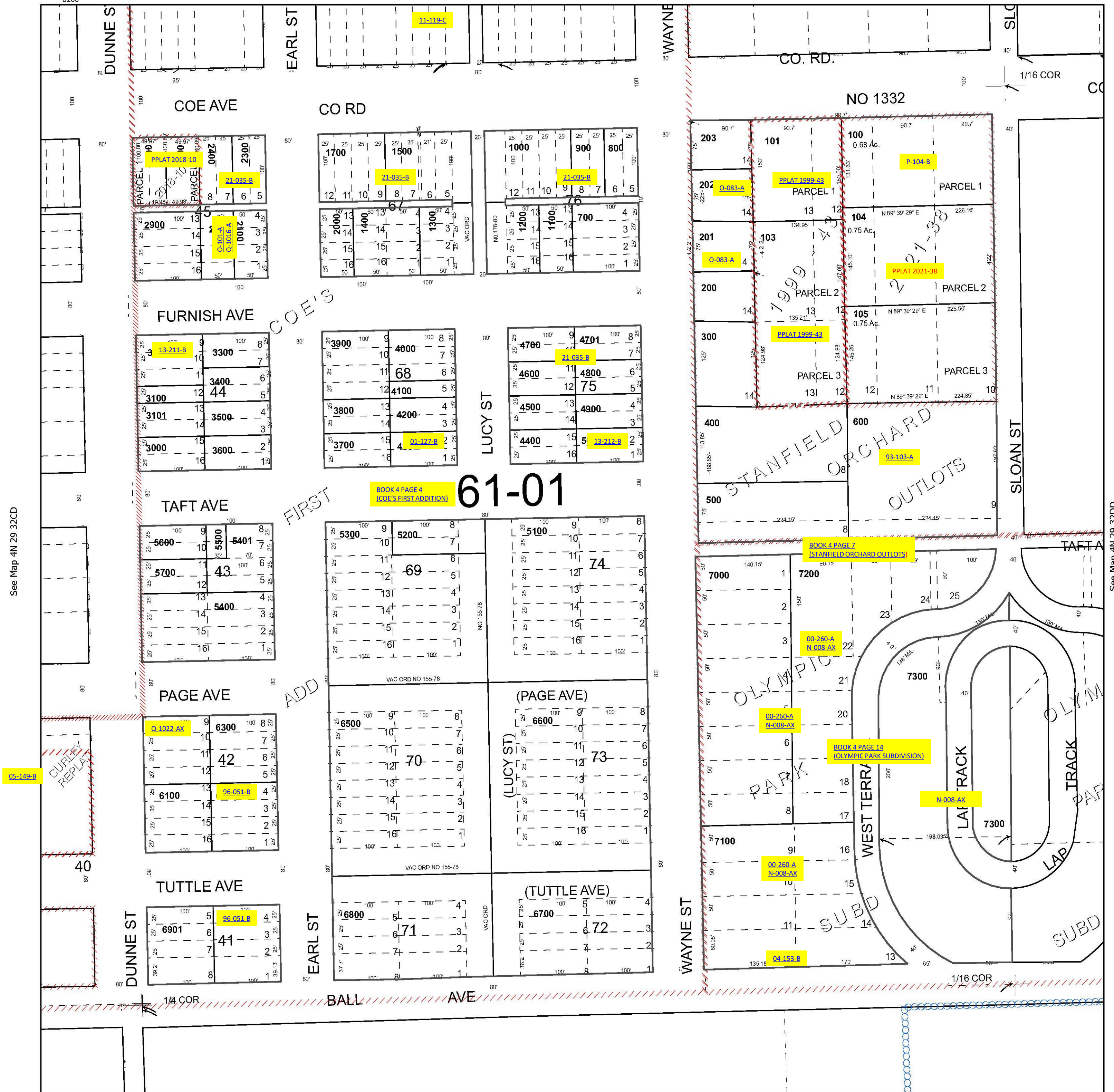
SCALE 1" = 100'

4N 29 32DC

Cancelled Tax Lots

- 1800 6401
- 1800 7001
- 1900 7201
- 2500
- 2800
- 3201
- 5800
- 5900
- 6000
- 6200

See Map 4N 29 32DB



See Map 4N 29 32CD

See Map 4N 29 32DD

Revised 2/22/2023

See Map 3N 29 05

4N 29 32DC