

ALSO SEE SURVEY Q-0045-B

This map was prepared for Assessment & Taxation purposes only and was NOT prepared nor is it suitable for legal, engineering or surveying purposes.

Cancelled Tax Lots
400
7201

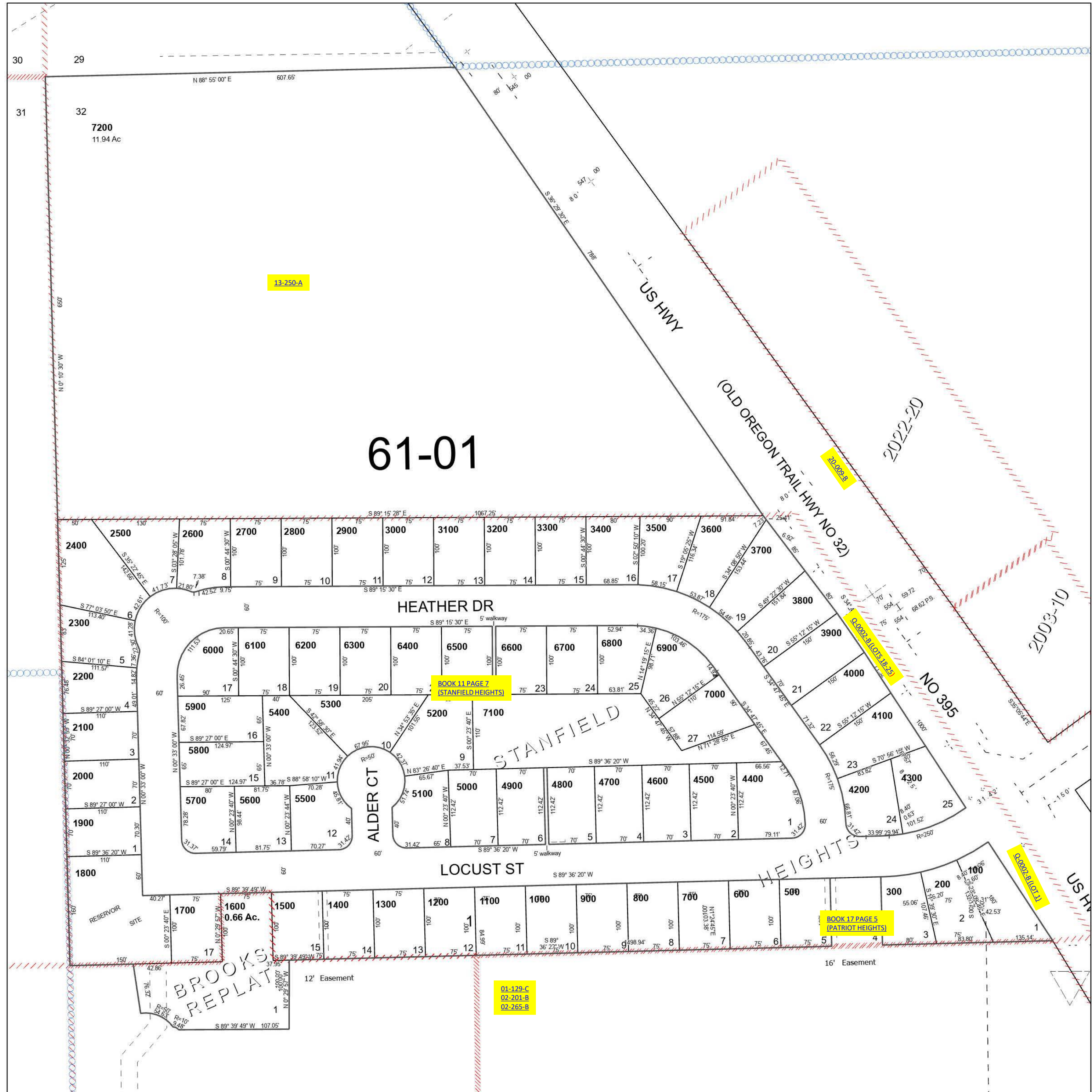
NW 1/4 NW 1/4 SEC 32 T4N R29E WM UMATILLA COUNTY

SCALE 1" = 100'

Stanfield

4N 29 32BB

See Map 4N 29 29



See Map 4N 29 31

See Map 4N 29 32BA

Revised 4/27/2023

See Map 4N 29 32B

4N 29 32BB