

ALSO SEE SURVEYS 86-105-A, 95-059-B; SURVEY NO. 233, OLD PRIVATE SURVEYS; CORNER RECORDS; G.L.O. SURVEYS

This map was prepared for Assessment purposes only.



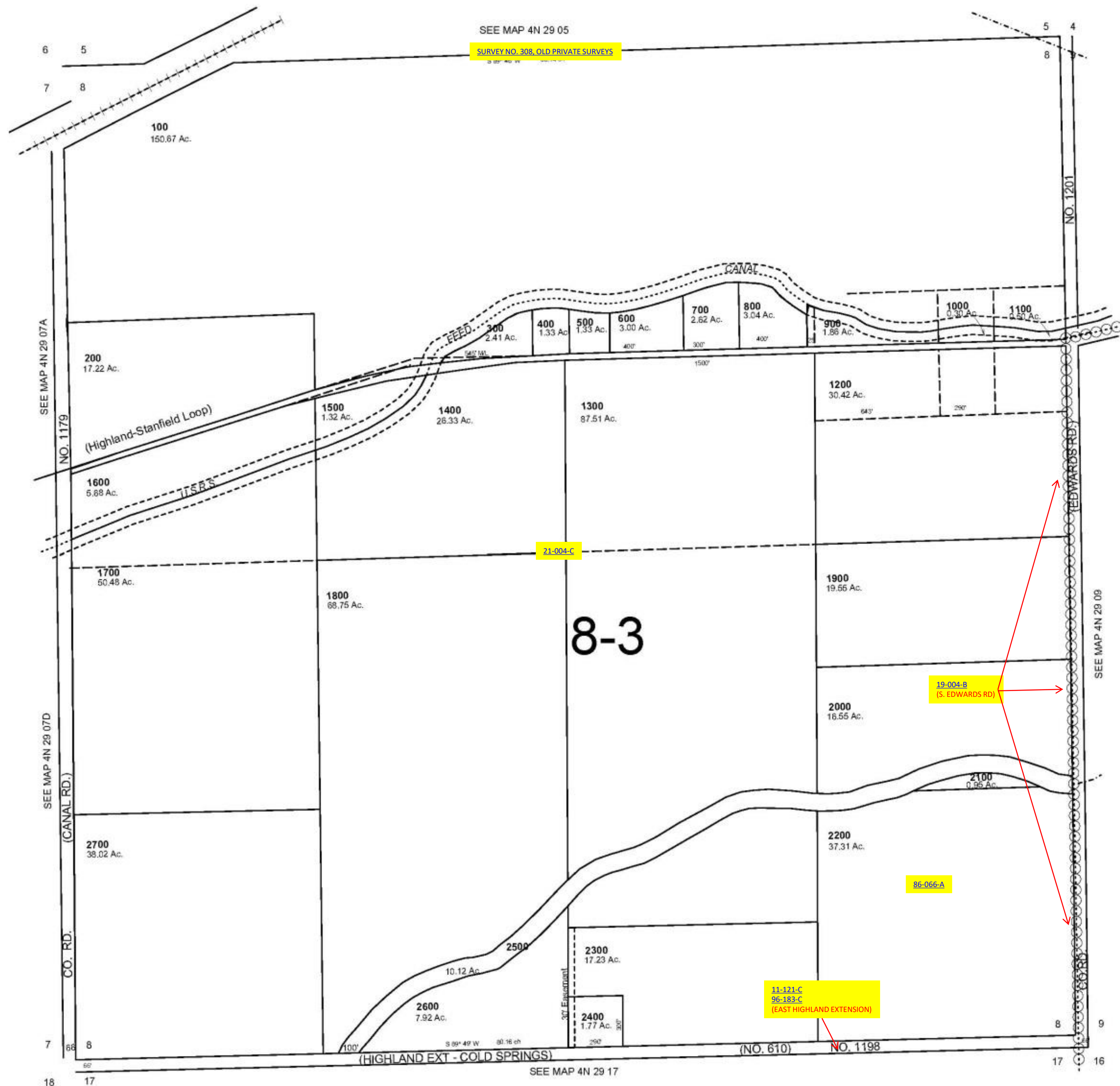
# SEC 8 T4N R29E WM UMATILLA COUNTY, OR

7/27/06

## 4N2908

SCALE: 1" = 400'

AERIAL PHOTO NO. NZ-2P 18-20 & 1P 124-126



## 4N2908