

ALSO SEE SURVEYS 07-074-C, 95-059-B, 06-265-C, 88-027-B; SURVEYS NO. 233 & 304, OLD PRIVATE SURVEYS; CORNER RECORDS; G.L.O. SURVEYS

This map was prepared for Assessment & Taxation purposes only and was NOT prepared nor is it suitable for legal, engineering or surveying purposes.

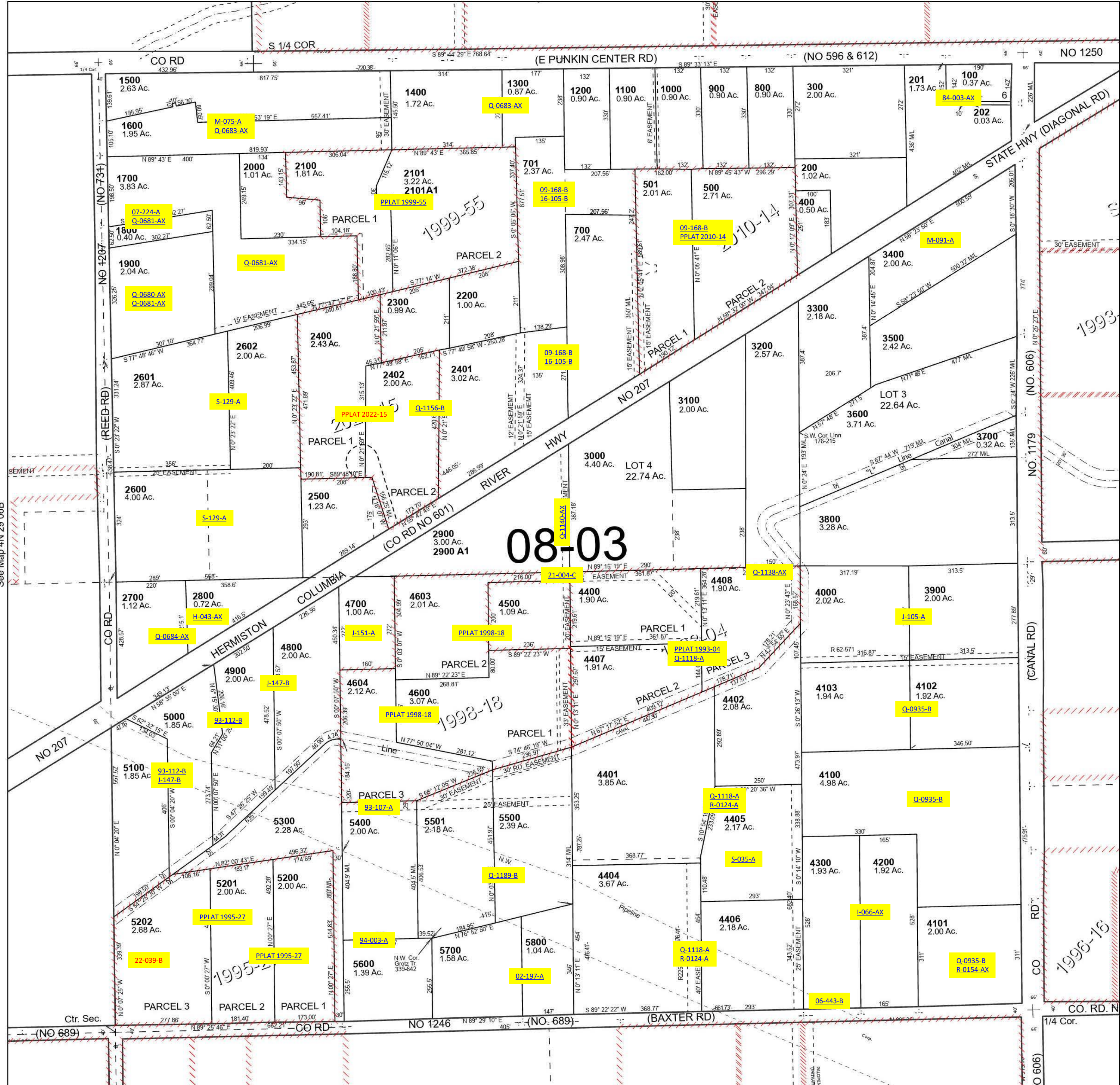
NE 1/4 SEC 06 T4N R29E WM UMATILLA COUNTY

4N 29 06A

SCALE 1" = 200'

See Map 5N 29 31D

Cancelled Tax Lots
600
601
4403
4601
4602



See Map 4N 29 06B

See Map 4N 29 05B

Revised 5/24/2023

See Map 4N 29 06D

4N 29 06A