

ALSO SEE SURVEYS 03-294-C, E-009-B, 02-160-B, 03-054-C, I-161-C; CORNER RECORDS; G.L.O. SURVEYS

This map was prepared for Assessment & Taxation purposes only and was NOT prepared nor is it suitable for legal, engineering or surveying purposes.

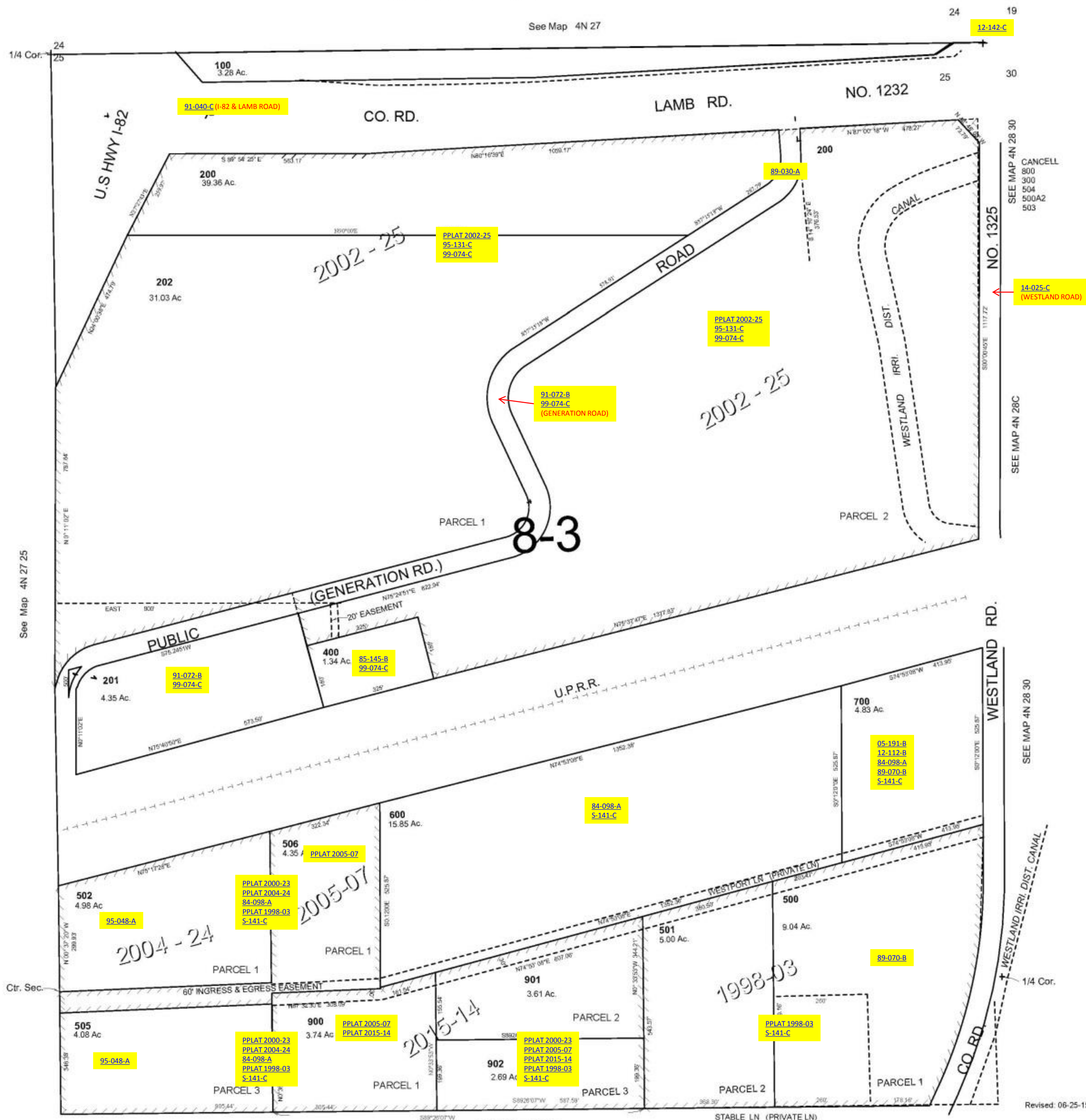
# NE1/4 SEC 25 T 4N R 27E WM UMATILLA COUNTY

## 4N2725A

AERIAL PHOTO NO 1P 116-118  
2P 27-29 & 36-38

SCALE: 1" = 200'

See Map 4N 27



See Map 4N 27 25

Ctr. Sec.

SEE MAP 4N 27 25

STABLE LN (PRIVATE LN)

## 4N2725A