

This map was prepared for Assessment & Taxation purposes only and was NOT prepared nor is it suitable for legal, engineering or surveying purposes.

T4N R27E WM UMATILLA COUNTY

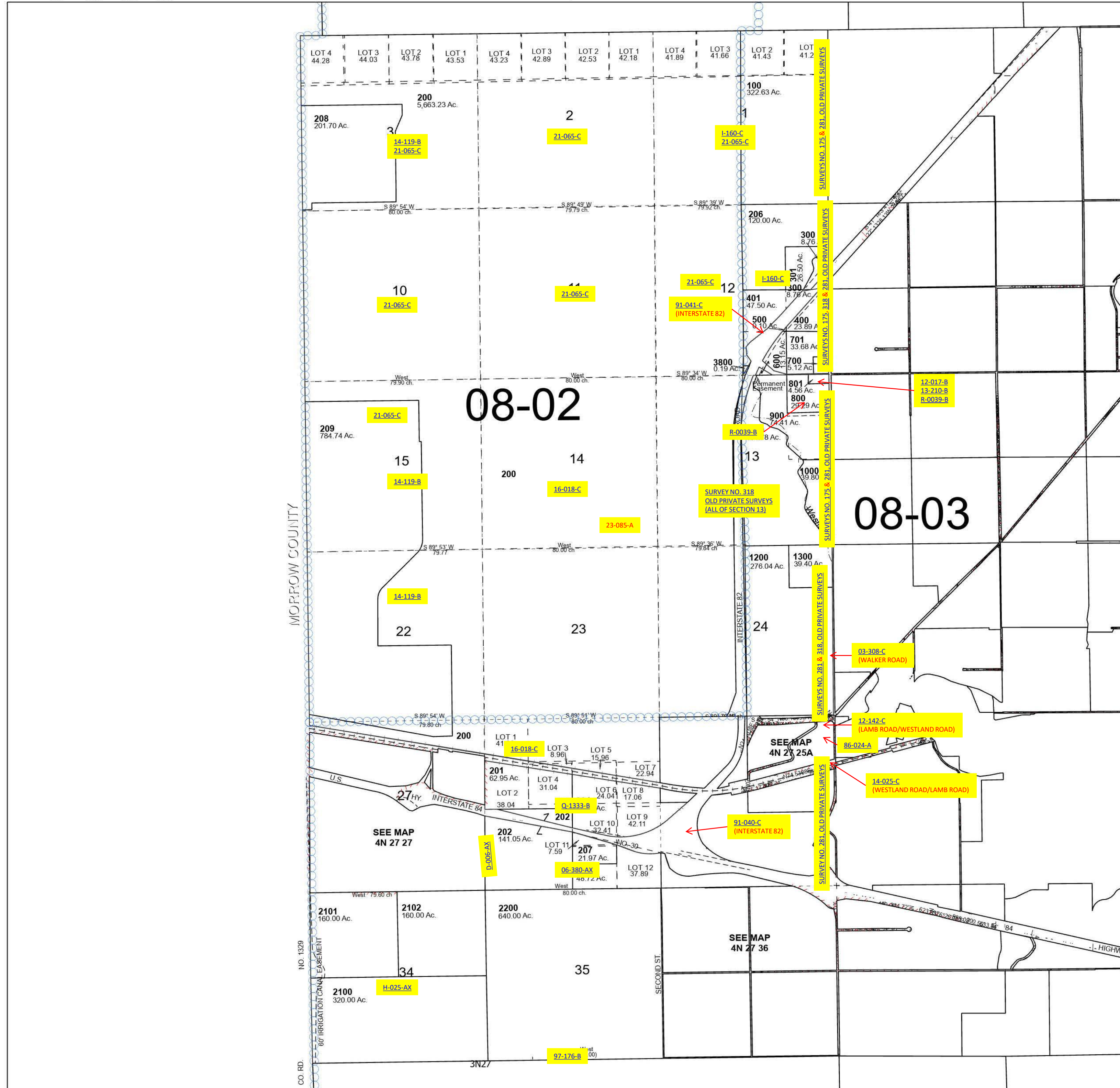
4N 27

SCALE 1" = 2,000'

See Map 5N 27

Cancelled Tax Lots

203	1101	1890-1892	2801	3600
208	1201	1900	2900	3700
209	1202	2300	2901	
302	1401-1419	2301	3000	
402	1500	2400	3001	
501	1600-1602	2500	3100	
502	1700-1702	2600-2607	3200	
601	1800-1803	2700	3300	
602	1870	2701	3400	
901	1880	2800	3500	



See Map 4N 28

Revised 8/24/2023

See Map 3N 27

4N 27