

This map was prepared for assessment purposes

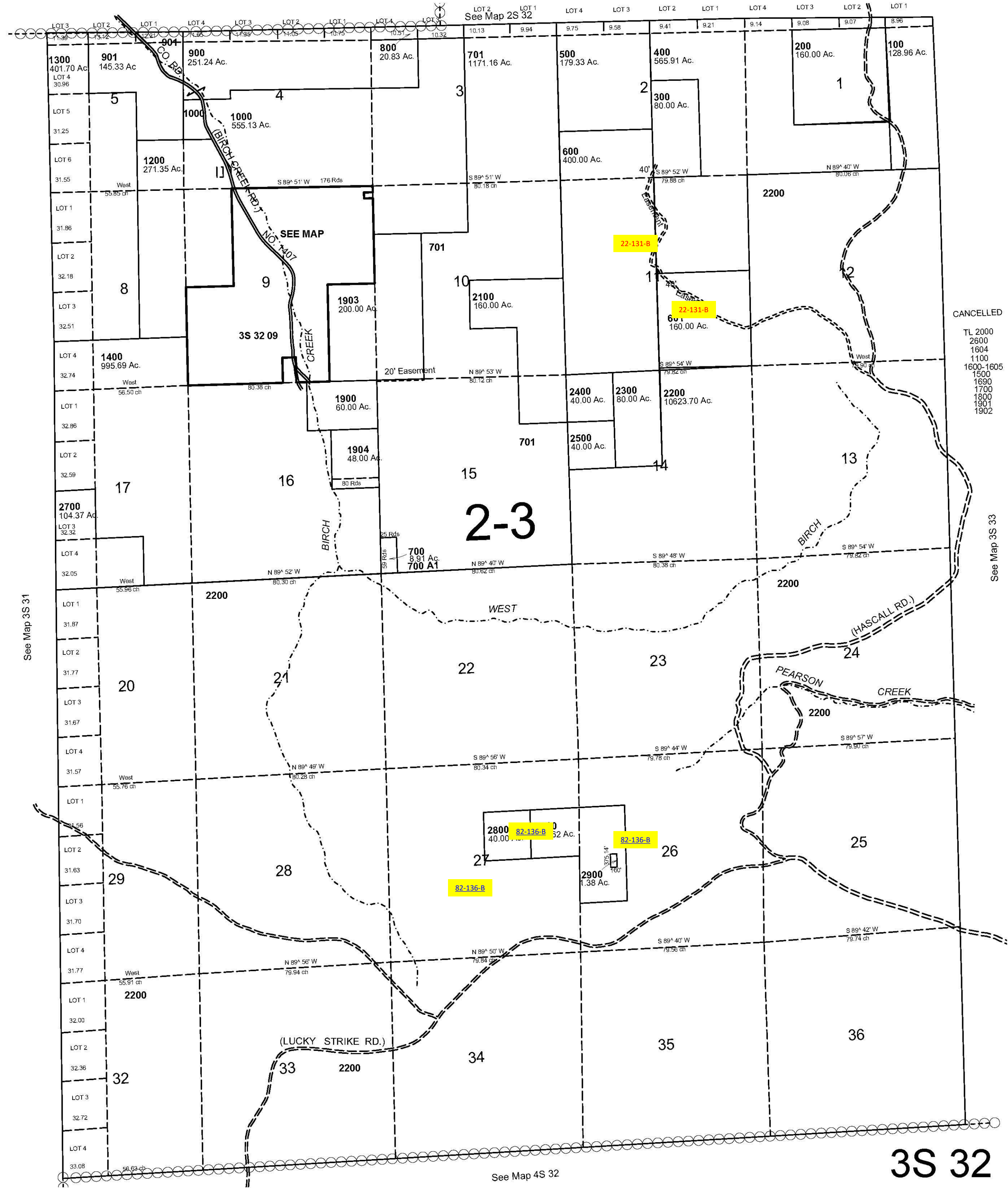
1"=2000'

T3S R32E WM UMATILLA COUNTY

3/12/07

3S 32

AERIAL PHOTO NO. 1 P 18-24 & 9P 93-100



CANCELLED
TL 2000
2600
1604
1100
1600-1605
1500
1690
1700
1800
1901
1902

See Map 3S 31

See Map 3S 33

See Map 4S 32

3S 32