

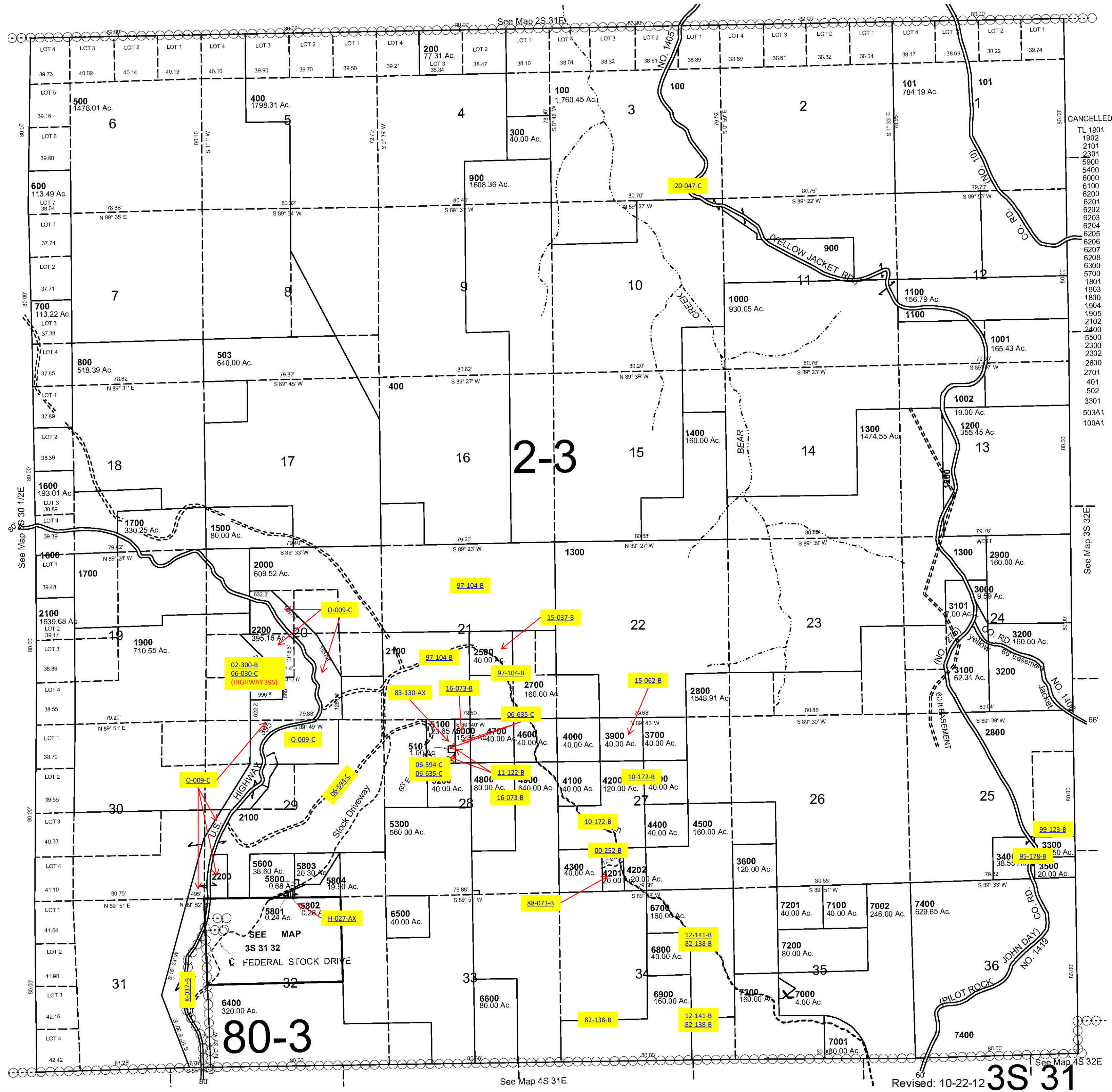
This map was prepared for Assessment & Taxation purposes only and was NOT prepared nor is it suitable for legal, engineering or surveying purposes.

T3S R31E WM UMATILLA COUNTY

1"=2000'

AERIAL PHOTO NO NZ 9P 60-64 & 10P 12-17

3S 31



- CANCELLED
- TL 1901
 - 1902
 - 2101
 - 2301
 - 5600
 - 5400
 - 6000
 - 6100
 - 6200
 - 6201
 - 6202
 - 6203
 - 6204
 - 6205
 - 6206
 - 6207
 - 6208
 - 6300
 - 5700
 - 1801
 - 1903
 - 1800
 - 1904
 - 1905
 - 2102
 - 2400
 - 5500
 - 2300
 - 2302
 - 2600
 - 2701
 - 401
 - 502
 - 3301
 - 503A1
 - 100A1