

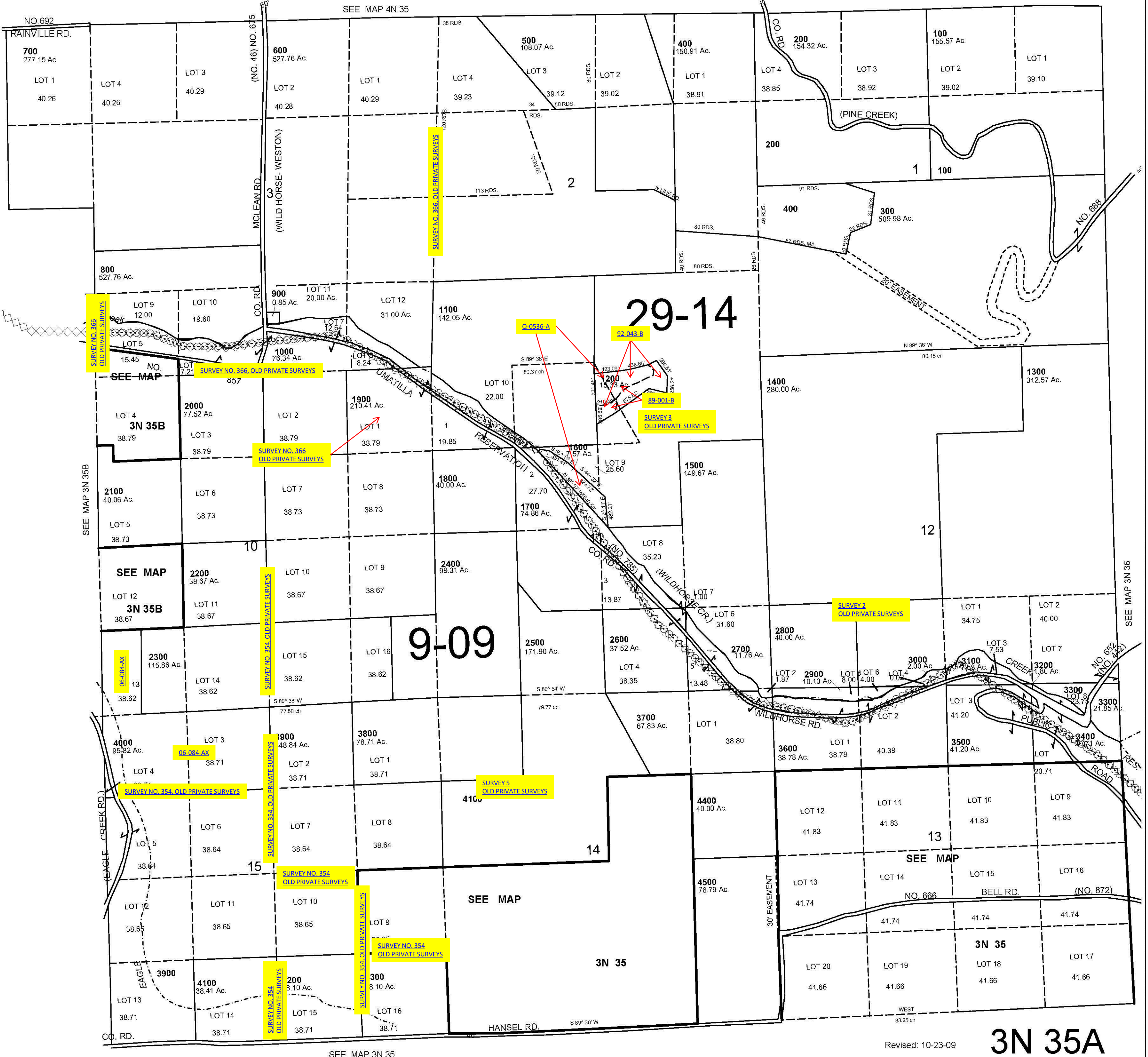
ALSO SEE SURVEYS 11-186-A, 89-057-B, 97-141-C; CORNER RECORDS; G.L.O. SURVEYS; REDFIELD SURVEYS

This map was prepared for Assessment & Taxation purposes only and was NOT prepared nor is it suitable for legal, engineering or surveying purposes.

NE1/4 T3N R35E WM UMATILLA COUNTY

AERIAL PHOTO NO. NZ 3P 161-165, 4P 128-132 & 148-153
3N 35A

1"=1000'



Revised: 10-23-09

3N 35A