

ALSO SEE SURVEYS 03-023-C, 89-057-B, 97-141-C, L-022-C; CORNER RECORDS; G.L.O. SURVEYS; REDFIELD SURVEYS

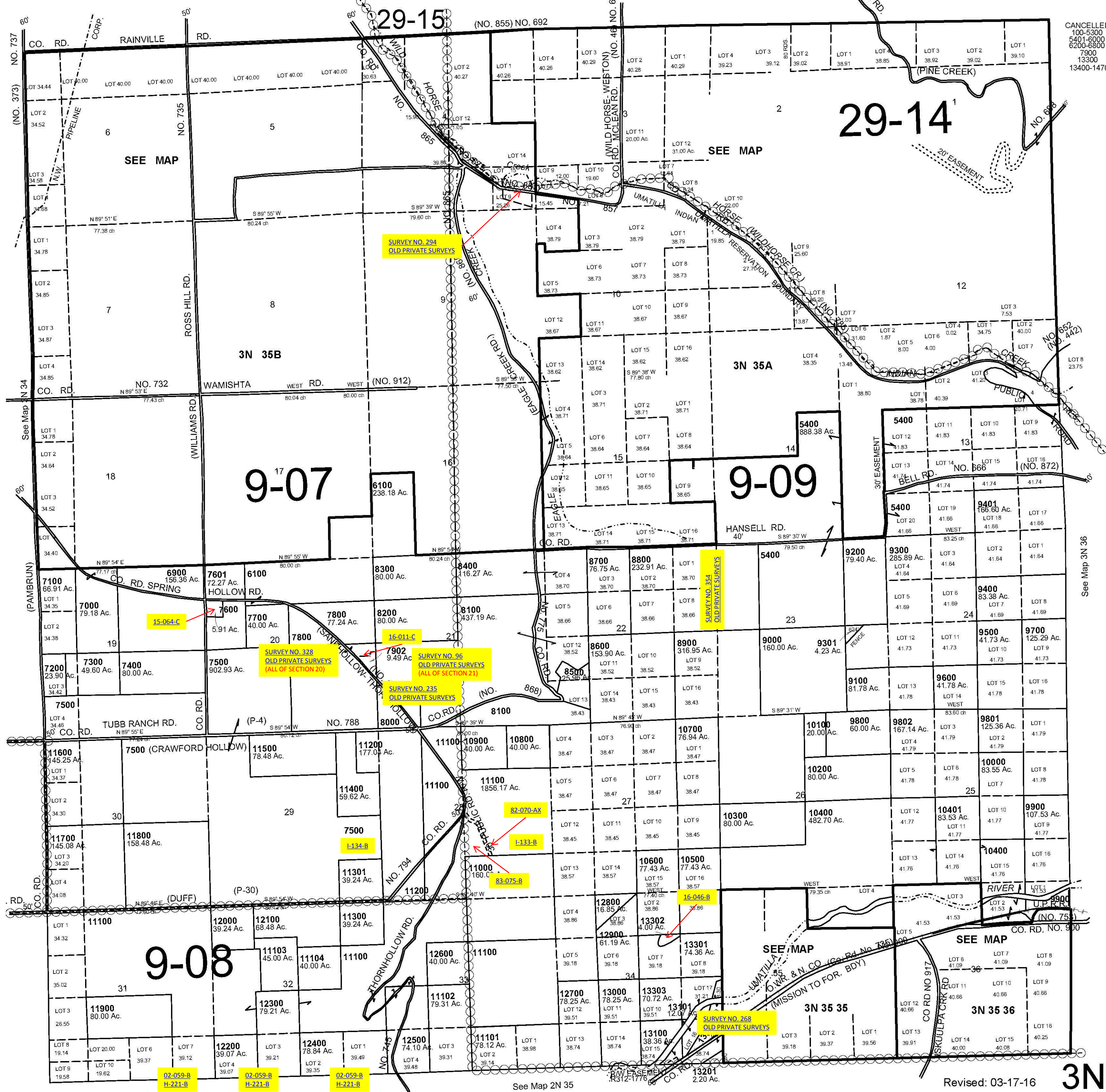
This map was prepared for Assessment & Taxation purposes only and was NOT prepared nor is it suitable for legal, engineering or surveying purposes.

T3N R35E WM UMATILLA COUNTY

3N 35

AERIAL PHOTO NO. NZ 3P 161-165, 4P 128-132 & 148-153

SCALE
1" = 2000'



CANCELLED
100-5300
5401-6000
6200-6800
7900
13300
13400-14700

See Map 3N 36

See Map 2N 35

Revised: 03-17-16

3N 35