

ALSO SEE SURVEYS Q-0529-A, Q-1122-C, 12-094-C; CORNER RECORDS; G.L.O. SURVEYS; SURVEY NO. 14, OLD PRIVATE SURVEYS

This map was prepared for Assessment & Taxation purposes only and was NOT prepared nor is it suitable for legal, engineering or surveying purposes.

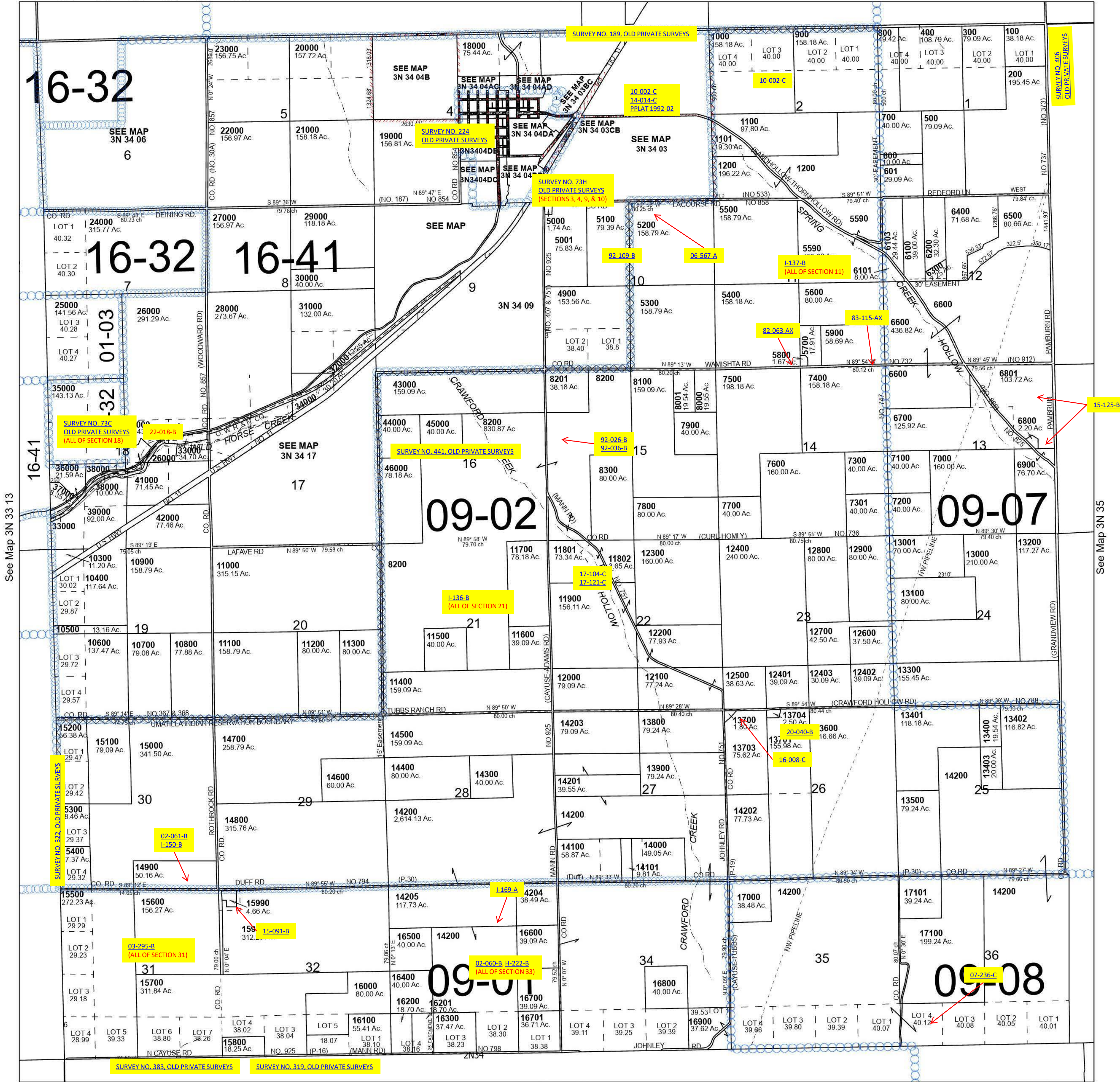
# T3N R34E WM UMATILLA COUNTY SCALE 1" = 2,000'

3N 34

Cancelled Tax Lots

1400	2101	3100-3103	4000	8800	9500	13702
1401	2300	3200	4100	8900	9600	17200
1404-1407	2400	3300	4200	9000	9700	
1500	2500	3301	4800	9100	9800	
1600-1605	2600	3400	6000	9101	9900	
1700	2700	3500	6102	9200	9901	
1800	2800-2803	3600	8400	9300	10000	
1900-1902	2900	3700	8500	9400	10100	
2000	3000	3800	8600	9401	10200	
2100	3001	3900	9700	9500	12900	

See Map 4N 34



See Map 3N 33 13

See Map 3N 35

Revised 8/11/2023

See Map 2N 34

3N 34