

ALSO SEE SURVEYS 15-050-C, 15-052-C; CORNER RECORDS; G.L.O. SURVEYS

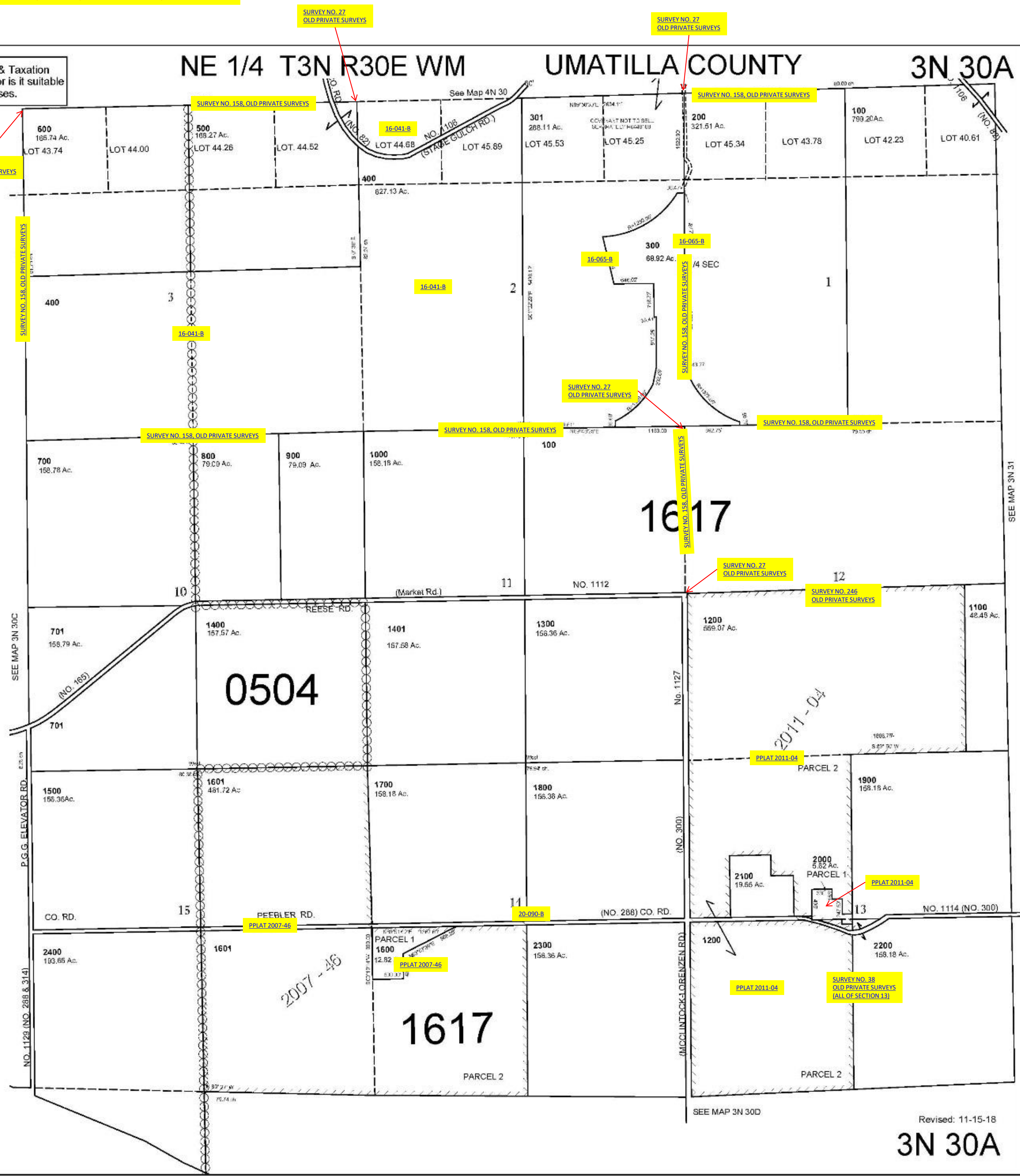
This map was prepared for Assessment & Taxation purposes only and was NOT prepared nor is it suitable for legal, engineering or surveying purposes.

SCALE: 1" = 1000'



AERIAL PHOTO NO.
2P 74-79 & 115-120
2P 138-142

NE 1/4 T3N R30E WM UMATILLA COUNTY 3N 30A



Revised: 11-15-18
3N 30A