

ALSO SEE SURVEYS 11-038-C, 98-155-C, S-158-C; CORNER RECORDS; G.L.O. SURVEYS

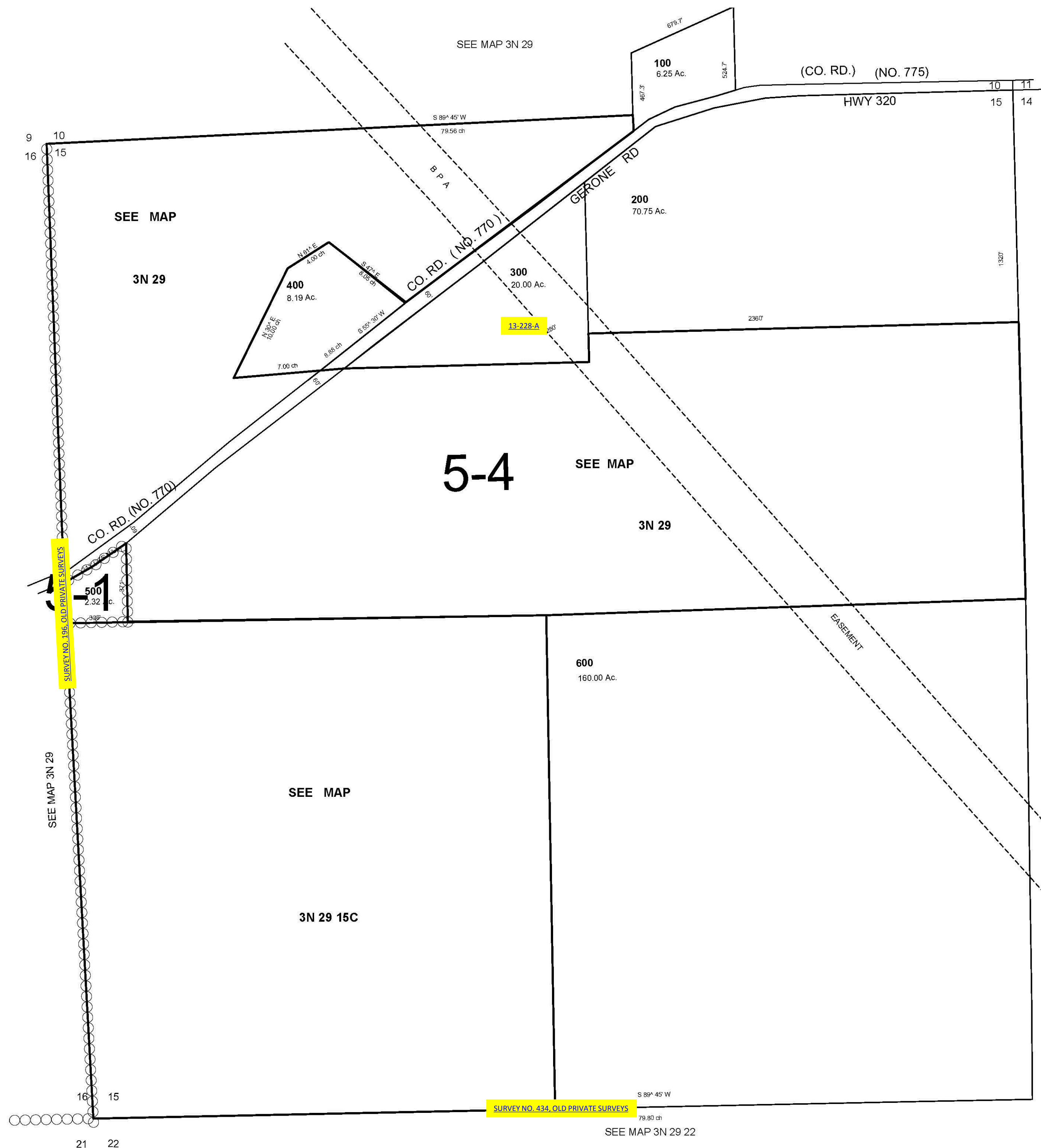
This map was prepared for Assessment and Taxation purposes only and has NOT been prepared for legal, engineering or surveying purposes.

SEC 15 T3N R29E WM UMATILLA COUNTY

3N 29 15

AERIAL PHOTO NO. NZ 2P 80-86, 109-114 & 144-148

SCALE 1"=400'



Revised: 4-29-09

3N 29 15