

This map was prepared for Assessment & Taxation purposes only and was NOT prepared nor is it suitable for legal, engineering or surveying purposes.

Cancelled Tax Lots:

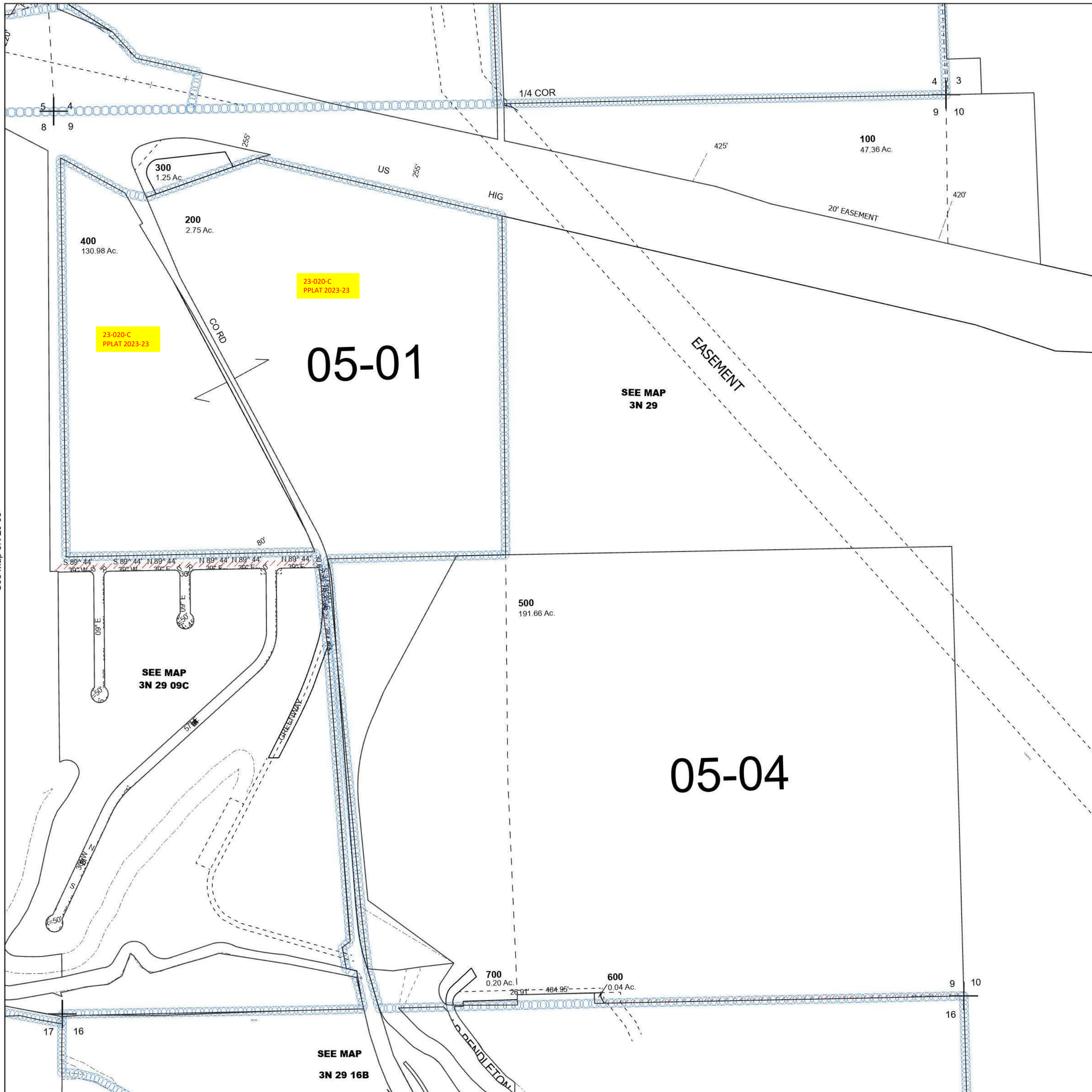
SEC 09 T3N R29E WM UMATILLA COUNTY

3N 29 09

Echo

SCALE 1" = 400'

See Map 3N 29 04



See Map 3N 29 08

See Map 3N 29

Revised 7/14/2023

See Map 3N 29 16A

3N 29 09