

ALSO SEE SURVEY 04-129-G

This map was prepared for Assessment & Taxation purposes only and was NOT prepared nor is it suitable for legal, engineering or surveying purposes.

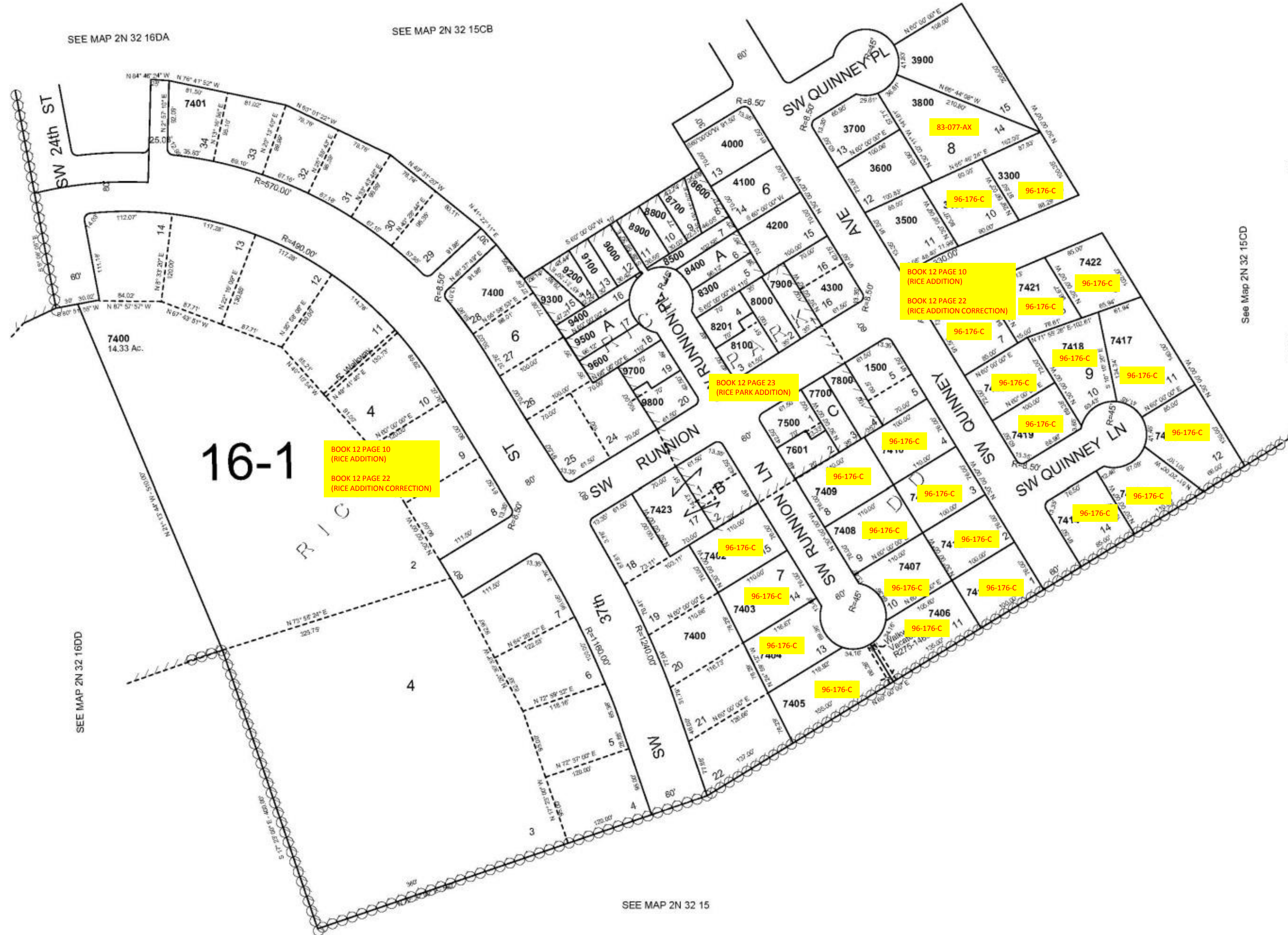


# SW1/4 SW1/4 SEC 15 T 2N R 32E WM UMATILLA COUNTY

SCALE: 1" = 100'

## 2N 32 15CC

AERIAL PHOTO NO. 4P-59



- CANCELLED
- TL 1800
  - 1700
  - 2800
  - 4400
  - 4500
  - 4600
  - 4700
  - 4800
  - 4900
  - 5000
  - 8200
  - 9701
  - 10000
  - 7600
  - 100
  - 200
  - 450-1400, Inc.
  - 1900-2600, Inc.
  - 2700-3200, Inc.
  - 5100-7300, Inc.
  - 10001
  - 9900
  - 1501
  - 4301

See Map 2N 32 15CCD

SEE MAP 2N 32 15

REVISED: 7/06/11

## 2N 32 15CC