

This map was prepared for Assessment & Taxation purposes only and was NOT prepared nor is it suitable for legal, engineering or surveying purposes.

ALSO SEE SURVEYS Q-0492-B, Q-1279-B, Q-1280-C

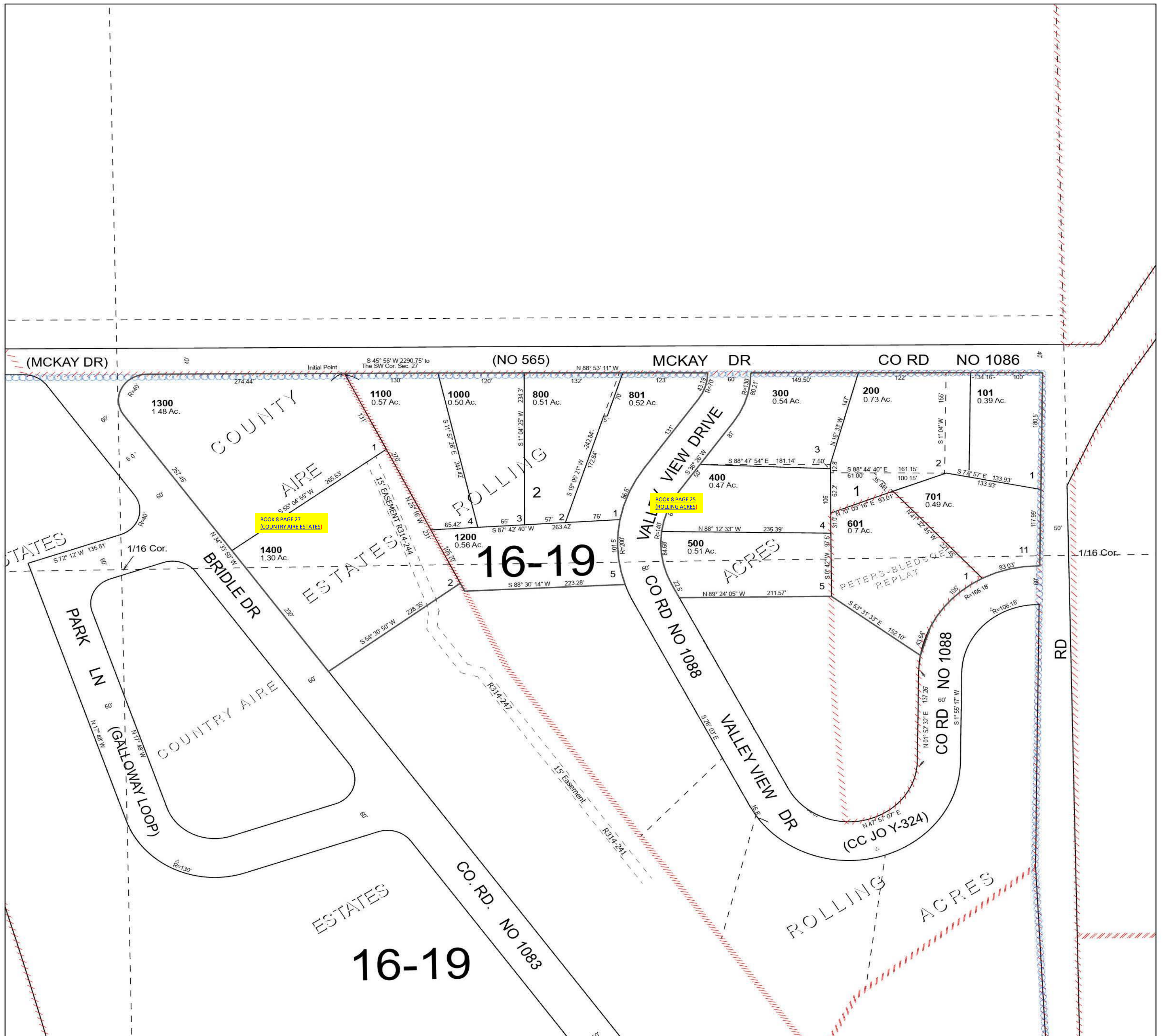
Cancelled Tax Lots

- 100
- 201
- 202
- 401
- 600
- 700
- 900

NE 1/4 SW 1/4 SEC 27 T2N R32E WM UMATILLA COUNTY

SCALE 1" = 100'

2N 32 27CA



See Map 2N 32 27CB