

ALSO SEE SURVEYS 99-181-C, 04-129-G

This map was prepared for Assessment & Taxation purposes only and was NOT prepared nor is it suitable for legal, engineering or surveying purposes.



# NE1/4 SE1/4 SEC 16 T2N R32E WM UMATILLA COUNTY

## 2N 32 16DA

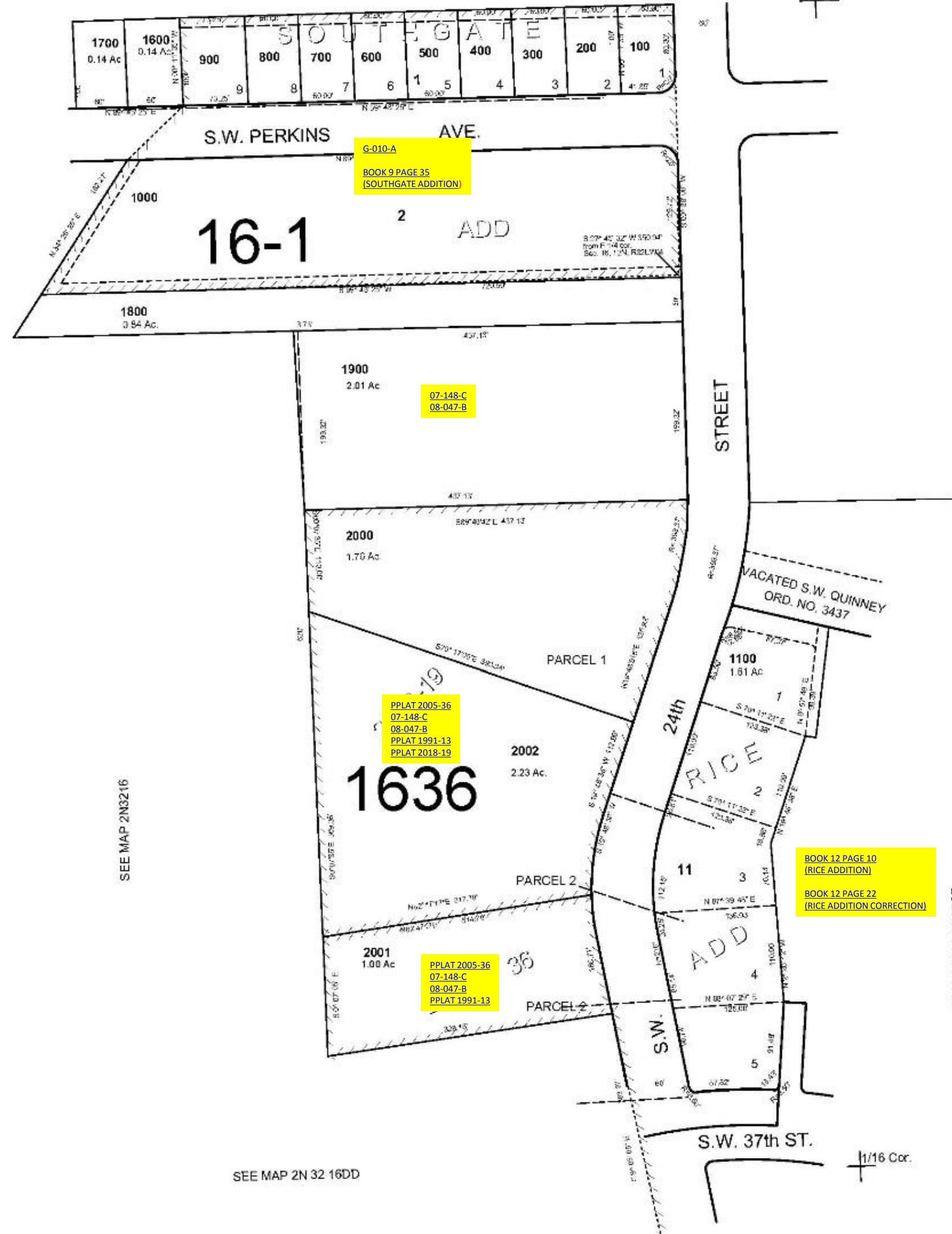
AERIAL PHOTO NO 4P-59

SCALE: 1" = 100'

SEE MAP 2N 32 16AD

1/16 Cor.

1/4 Cor.



SEE MAP 2N3216

SEE MAP 2N 32 15CB

1/16 Cor.

SEE MAP 2N 32 16DD

1/16 Cor.

REVISED: 12-11-18

## 2N3216DA