

This map was prepared for Assessment & Taxation purposes only and was not prepared nor is it suitable for legal, engineering or surveying purposes.

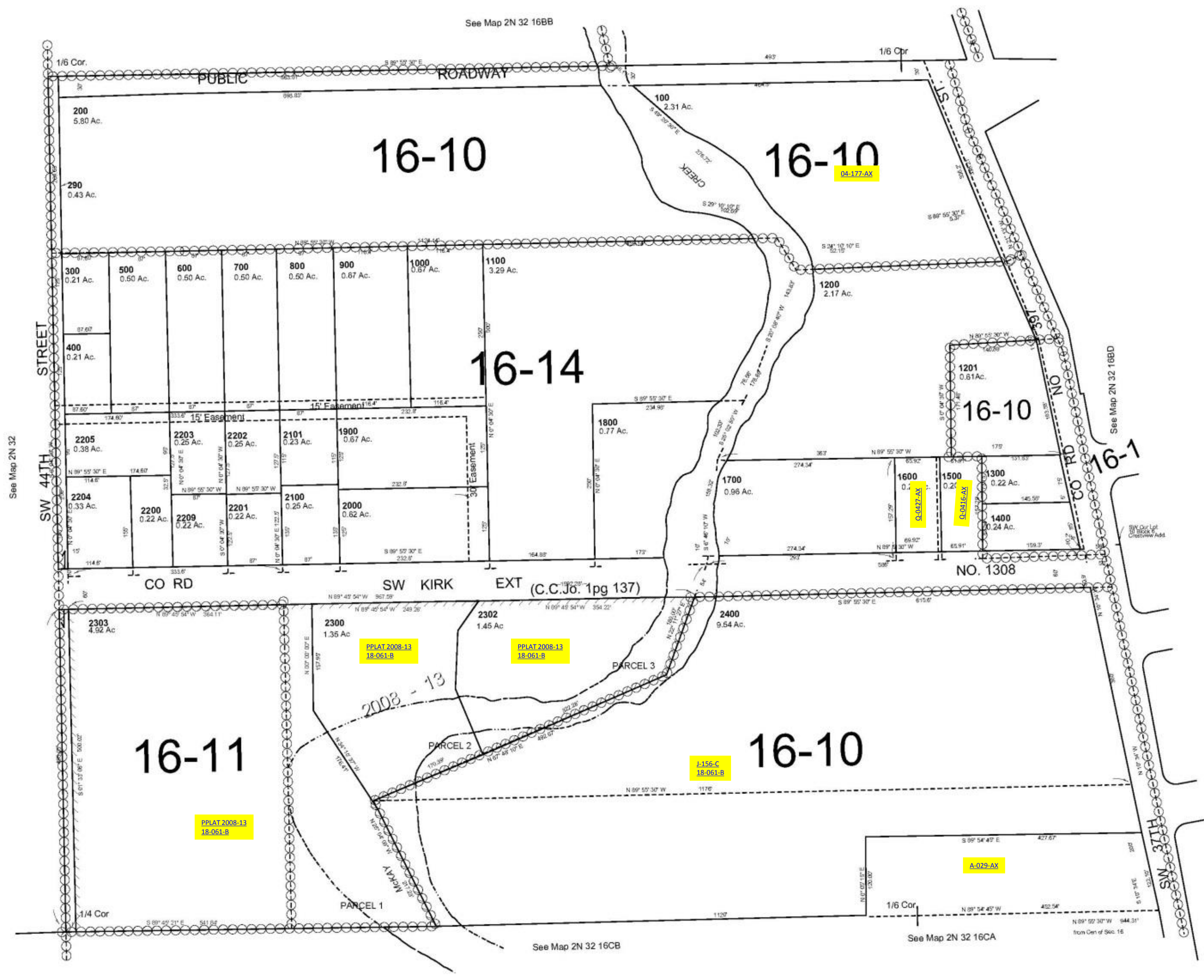


SW1/4 NW1/4 SEC 16 T2N R32 WM
UMATILLA COUNTY, OR

2N3216BC

Aerial Photo No. 4P-59

SCALE: 1" = 100'



See Map 2N 32 16CB

See Map 2N 32 16CA

REVISED: 2-7-13

2N3216BC