

ALSO SEE SURVEY 04-129-G

SE 1/4 SE1/4 SEC 15 T2N R32E WM

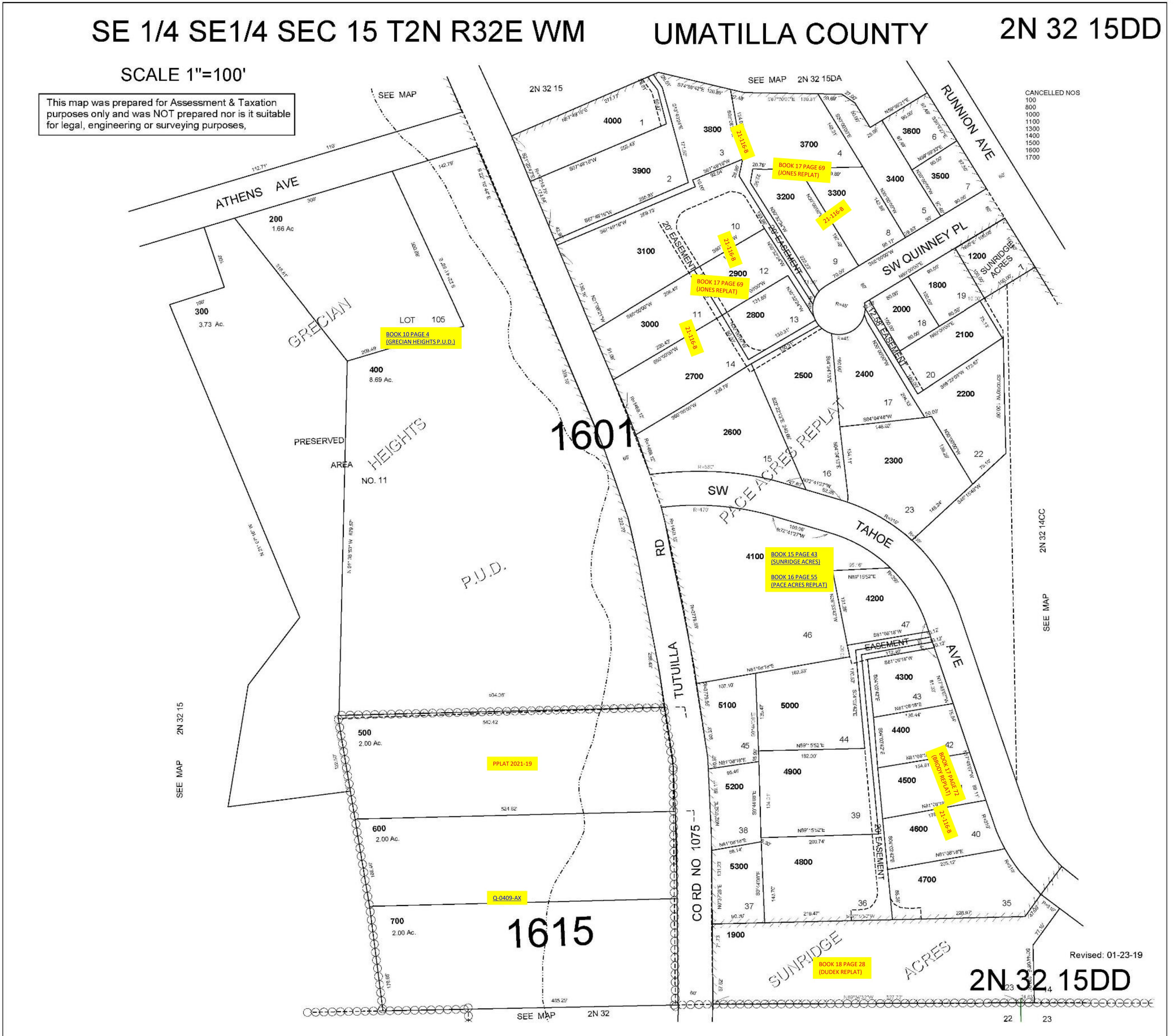
UMATILLA COUNTY

2N 32 15DD

SCALE 1"=100'

This map was prepared for Assessment & Taxation purposes only and was NOT prepared nor is it suitable for legal, engineering or surveying purposes,

CANCELLED NOS
 100
 800
 1000
 1100
 1300
 1400
 1500
 1600
 1700



SEE MAP 2N 32 14CC

Revised: 01-23-19

2N 32 15DD

22 23