

ALSO SEE SURVEYS 85-030-B, 04-129-G

This map was prepared for Assessment & Taxation purposes only and was NOT prepared nor is it suitable for legal, engineering or surveying purposes.

Cancelled Tax Lots:

NE 1/4 SE 1/4 SEC 15 T2N R32E WM UMATILLA COUNTY

Pendleton

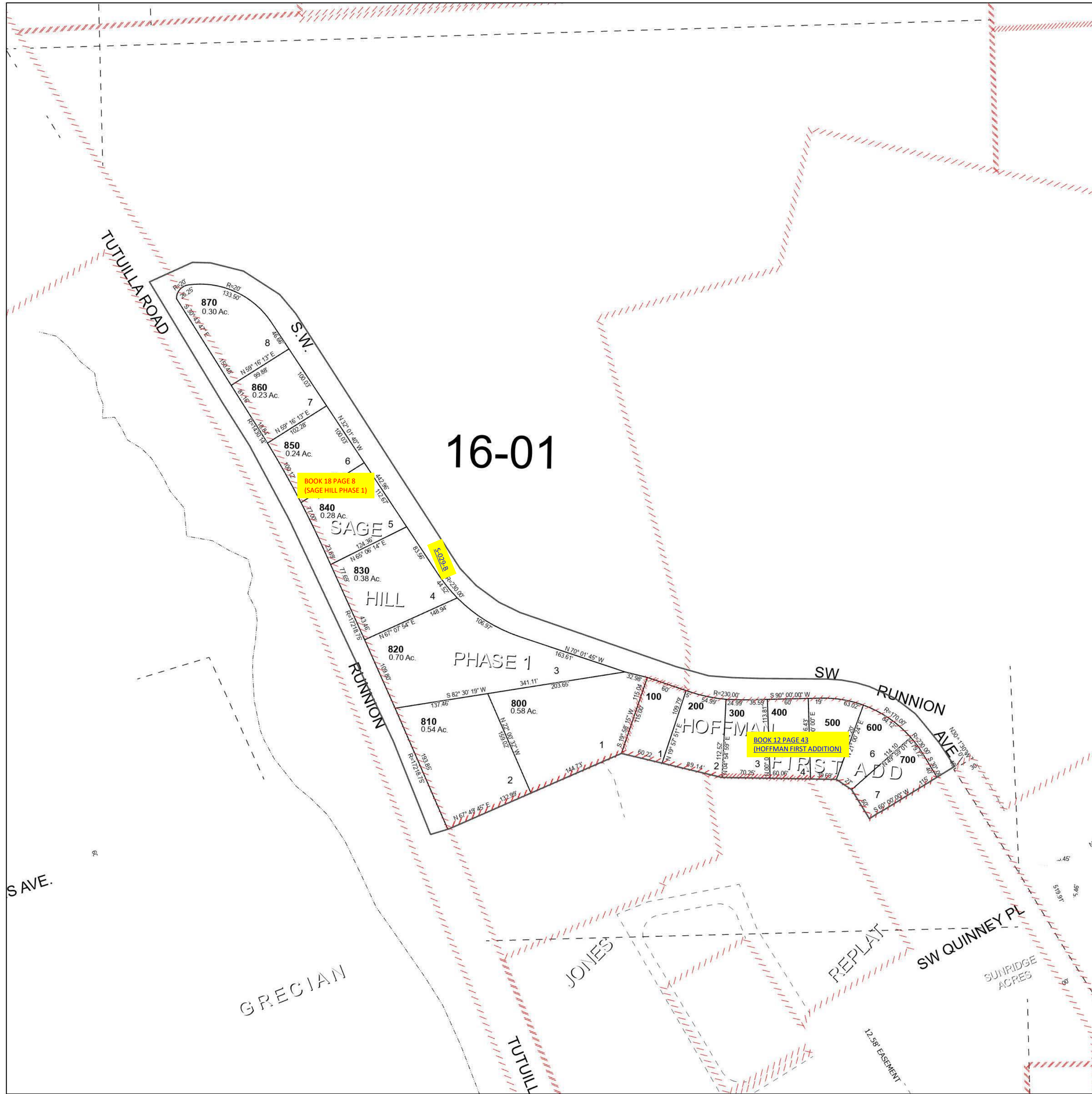
SCALE 1" = 100'

2N 32 15DA

See Map 2N 32 15

See Map 2N 32 15

See Map 2N 32 15



Revised 7/26/2023

See Map 2N 32 15DD

2N 32 15DA