

ALSO SEE SURVEY 04-129-G

This map was prepared for Assessment & Taxation purposes only and was NOT prepared nor is it suitable for legal, engineering or surveying purposes.

SE 1/4 SW 1/4 SEC 15 T2N R32E WM UMATILLA COUNTY

Pendleton

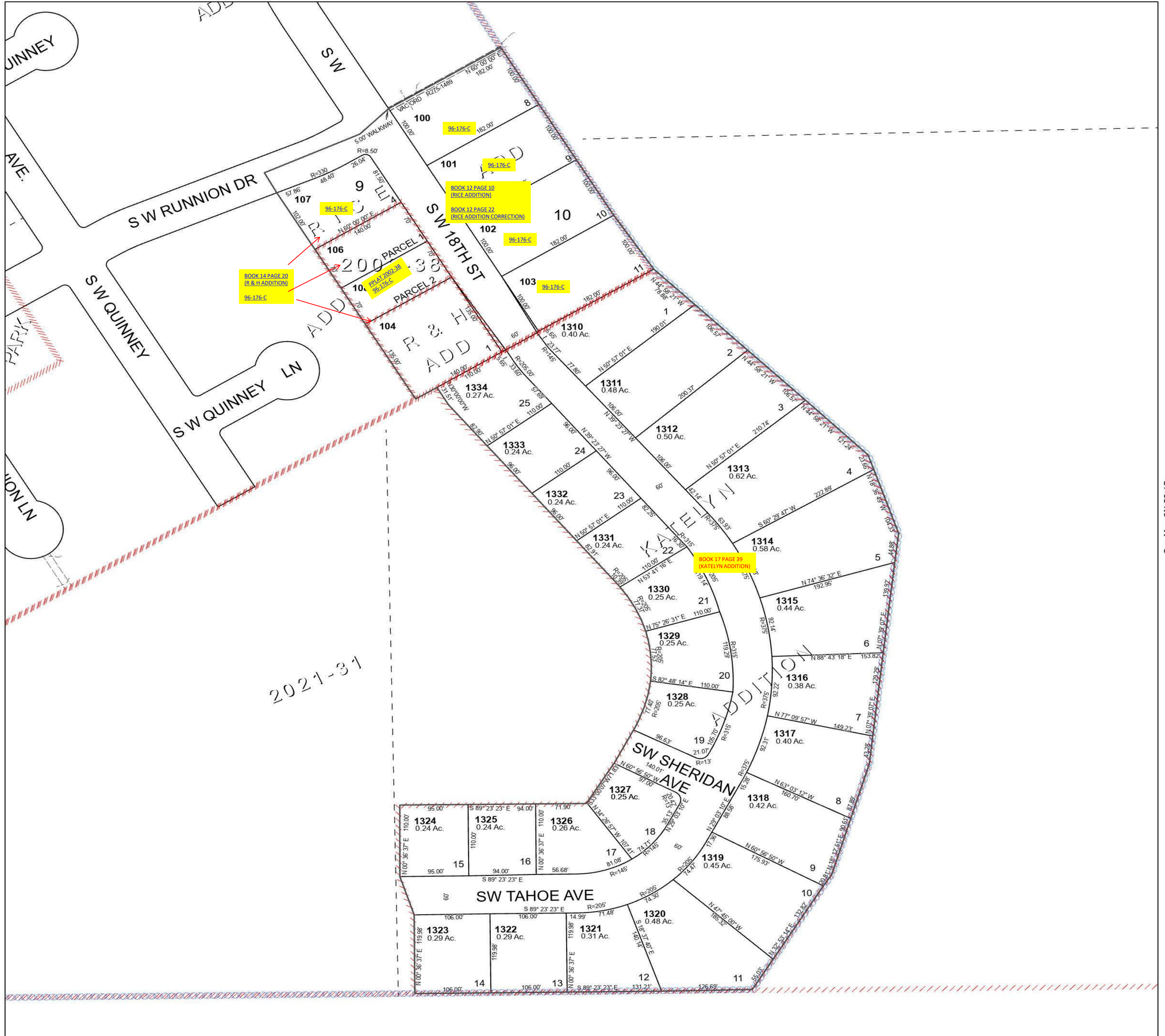
SCALE 1" = 100'

2N 32 15CD

Cancelled Tax Lots

- 200
- 300
- 400
- 500
- 600
- 700
- 800
- 105

See Map 2N 32 15



See Map 2N 32 15

See Map 2N 32 15

Revised 5/4/2023

See Map 2N 32

2N 32 15CD