

ALSO SEE SURVEY 13-082-AX, 04-129-G

This map was prepared for Assessment & Taxation purposes only and was NOT prepared nor is it suitable for legal, engineering or surveying purposes.



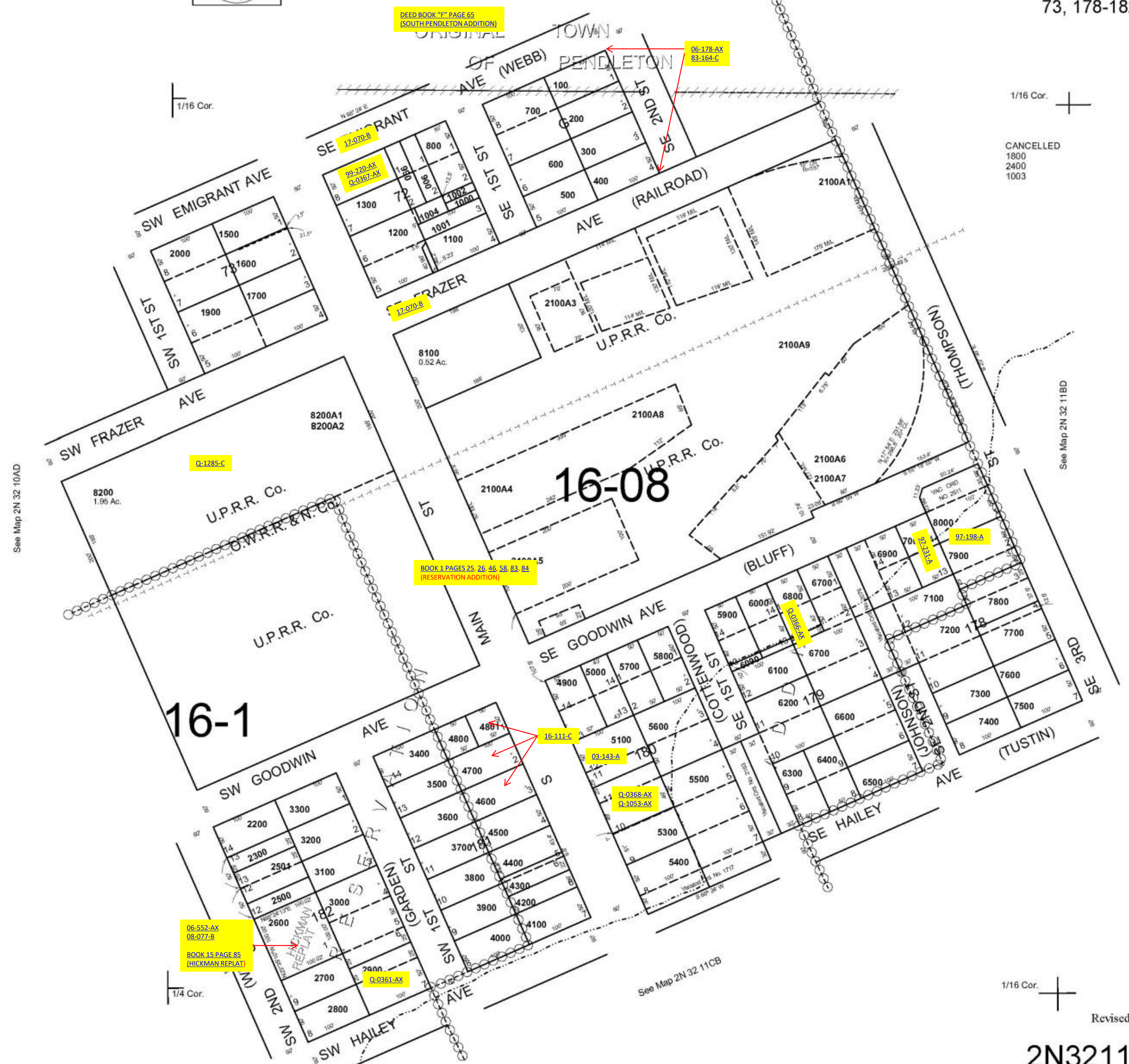
SW1/4 NW1/4 SEC 11 T 2 N R 32 E WM UMATILLA COUNTY

SCALE: 1" = 100'

2N3211BC

AERIAL PHOTO NO 4P-103

PENDLETON
Reservation Add Blk 72,
73, 178-182, G



1/16 Cor.

1/16 Cor.

CANCELLED
1800
2400
1003

See Map 2N 32 10AD

See Map 2N 32 11BD

See Map 2N 32 11CB

1/4 Cor.

1/16 Cor.

Revised: 7/8/14

2N3211BC