

ALSO SEE SURVEYS 89-122-B, 89-124-C, 04-129-G

This map was prepared for Assessment & Taxation purposes only and was NOT prepared nor is it suitable for legal, engineering or surveying purposes.

Cancelled Tax Lots

390	4714
1201	4717
1301	4718
2401	3603
2501	
2900	
2901	
3501	
3703	
4713	

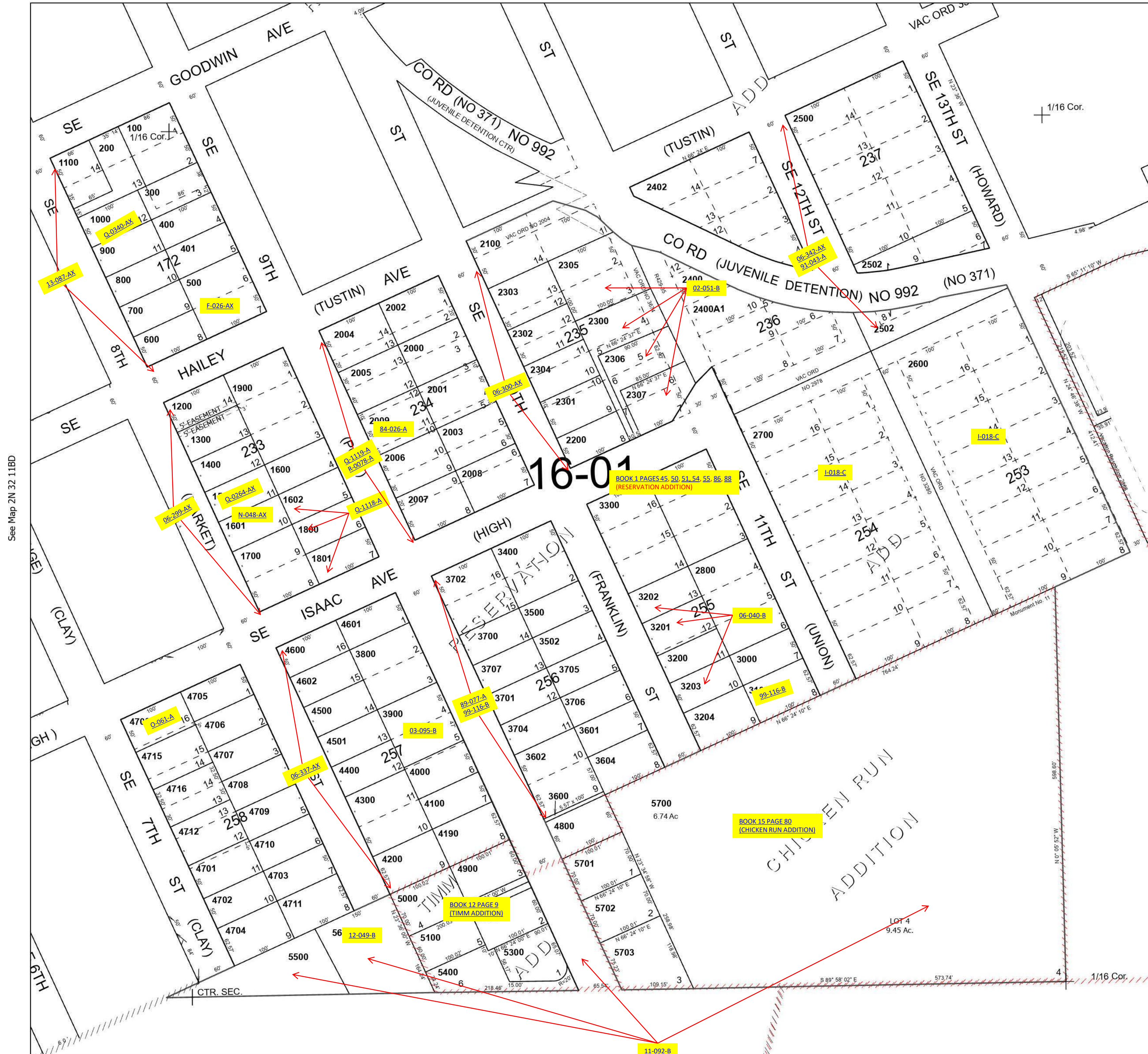
SW 1/4 NE 1/4 SEC 11 T2N R32E WM UMATILLA COUNTY

SCALE 1" = 100'

Pendleton

2N 32 11AC

See Map 2N 32 11AB



See Map 2N 32 11BD

See Map 2N 32 11AD

Revised 11/17/2023

See Map 2N 32 11D

2N 32 11AC