

ALSO SEE SURVEYS 05-074-B, 13-023-C, Q-0311-AX, Q-0320-B, Q-1287-AX, Q-1467-A

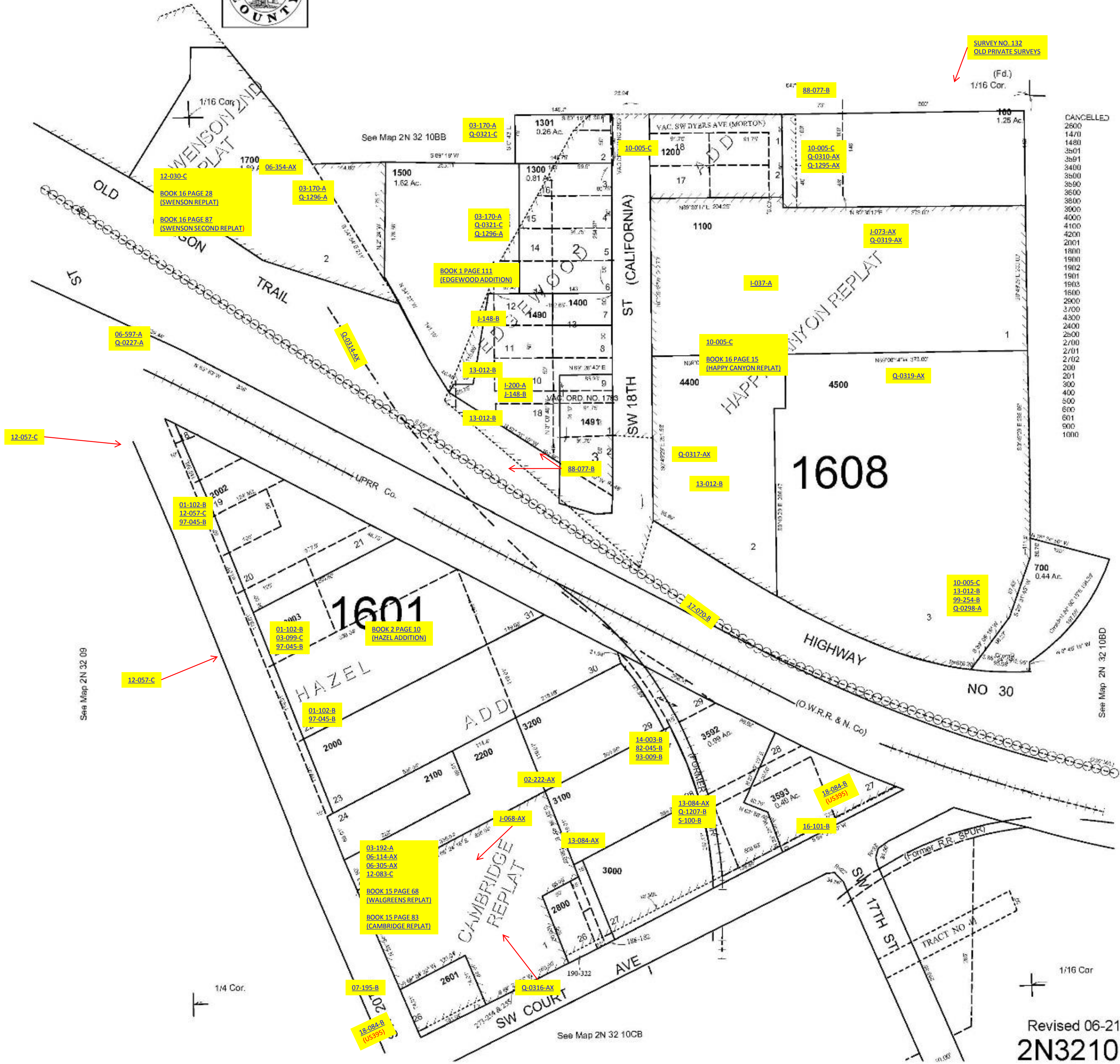
This map was prepared for Assessment & Taxation purposes only and was NOT prepared nor is it suitable for legal, engineering or surveying purposes.



SW1/4 NW1/4 SEC 10 T2N R32E WM
UMATILLA COUNTY
SCALE: 1" = 100'

2N3210BC

AERIAL PHOTO NO NZ-4P-103



- CANCELLED
- 2600
- 1470
- 1480
- 3501
- 3591
- 3400
- 3500
- 3500
- 3500
- 3000
- 4000
- 4100
- 4200
- 2001
- 1800
- 1900
- 1902
- 1901
- 1600
- 2500
- 2700
- 4300
- 2400
- 2500
- 2700
- 2701
- 2702
- 200
- 201
- 300
- 400
- 500
- 600
- 601
- 500
- 1000

Revised 06-21-19
2N3210BC