

UMATILLA COUNTY

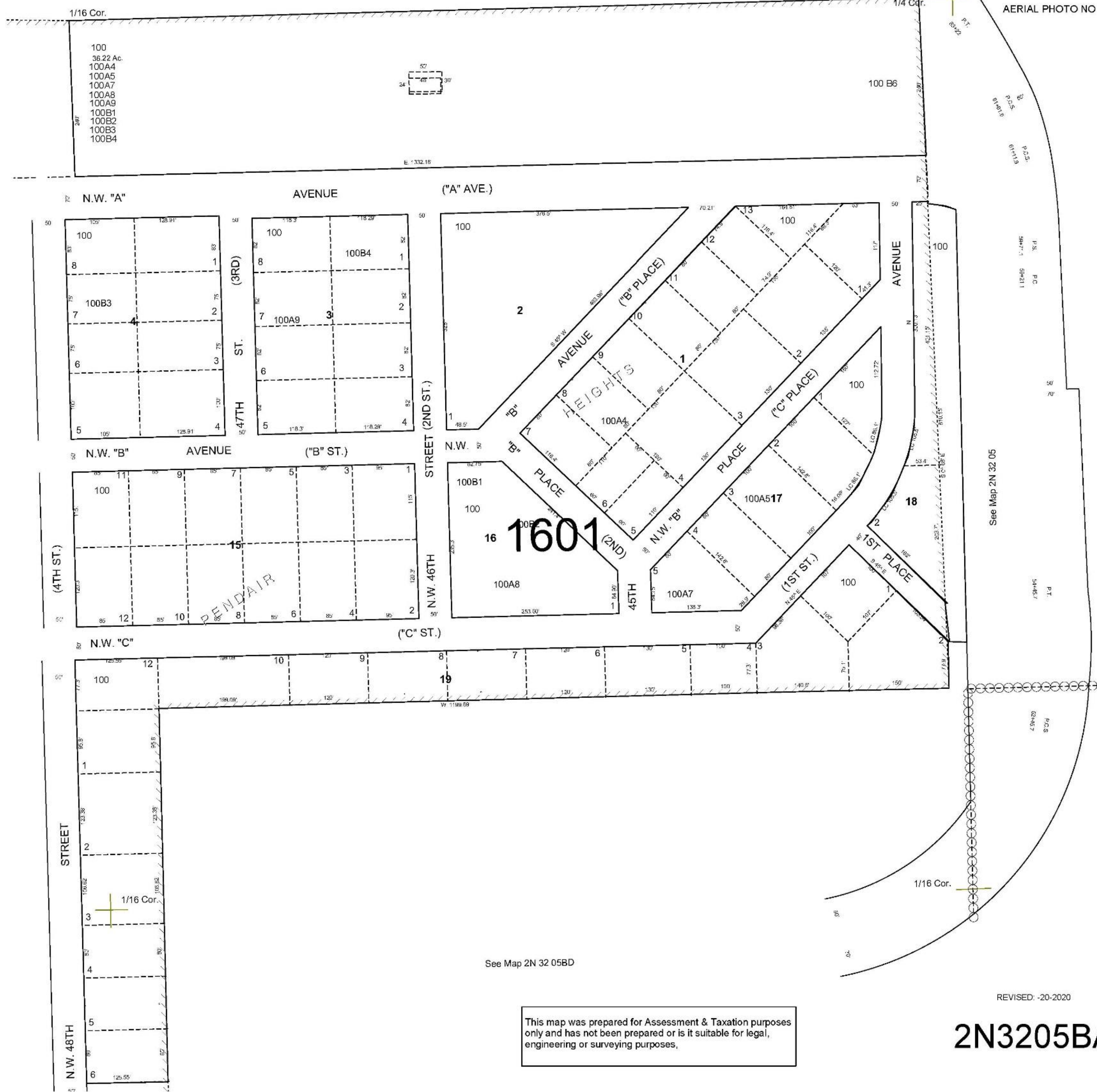
NE1/4 NW1/4 T2N R32E WM

SCALE 1"=100'

2N3205BA

See Map 3N 32 32

AERIAL PHOTO NO NZ-4P-105



See Map 2N 32 05BB

See Map 2N 32 05

See Map 2N 32 05BD

REVISED -20-2020

This map was prepared for Assessment & Taxation purposes only and has not been prepared or is it suitable for legal, engineering or surveying purposes.

2N3205BA