

This map was prepared for Assessment & Taxation purposes only and was NOT prepared nor is it suitable for legal, engineering or surveying purposes.

SE 1/4 NE 1/4 SEC 17 T1S R32E WM UMATILLA COUNTY

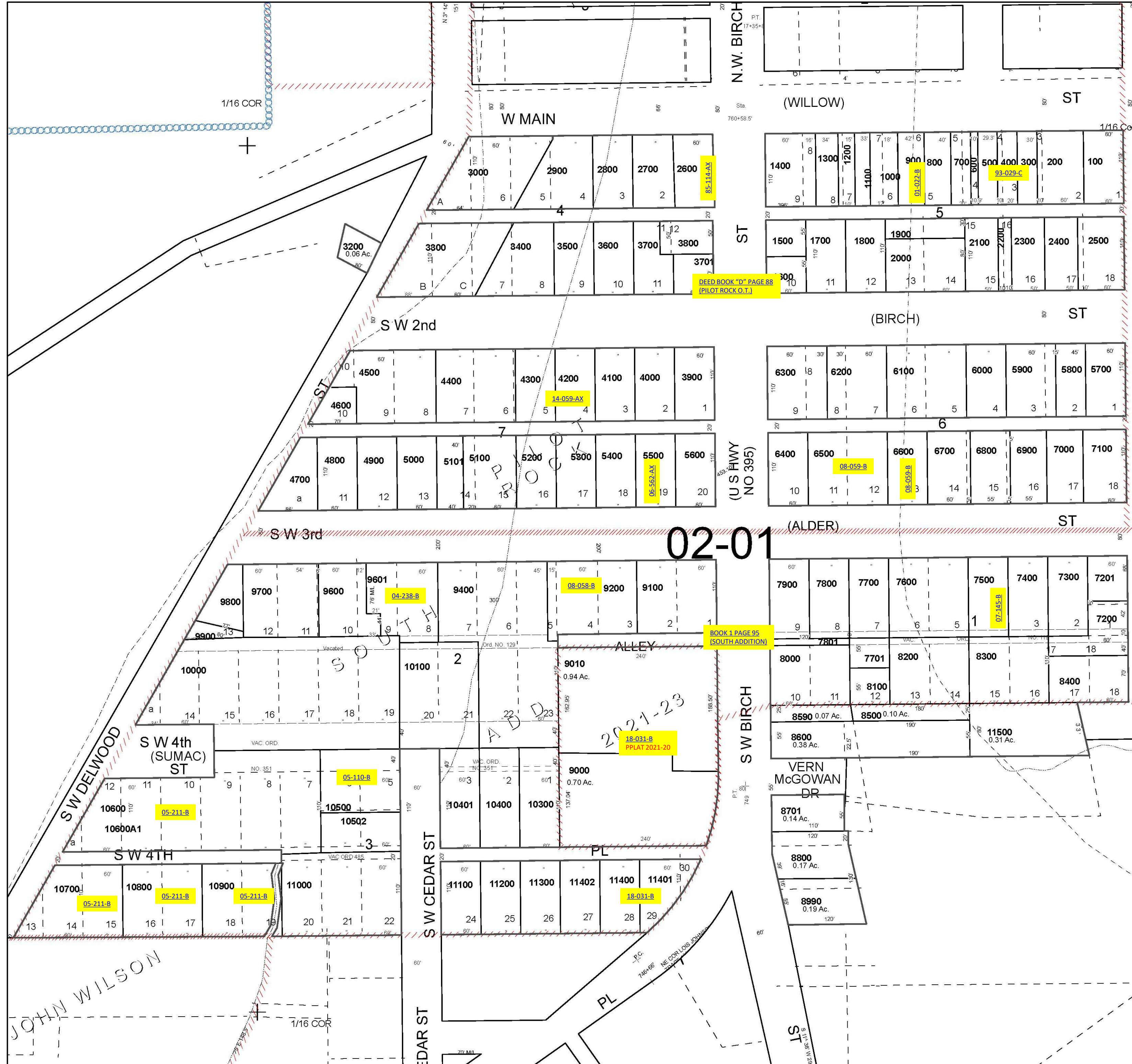
SCALE 1" = 100'

1S 32 17AD

Cancelled Tax Lots

- 3100
- 7901
- 8700
- 7290
- 9500
- 10200
- 8900
- 10501
- 9300

See Map 1S 32 17AA



See Map 1S 32 17

See Map 1S 32 18BC

Revised 12/23/2022

See Map 1S 32 17DA

1S 32 17AD