

ALSO SEE SURVEYS 07-048-C, 08-025-C, 11-112-C, 97-109-B; CORNER RECORDS; G.L.O. SURVEYS

This map was prepared for assessment purposes

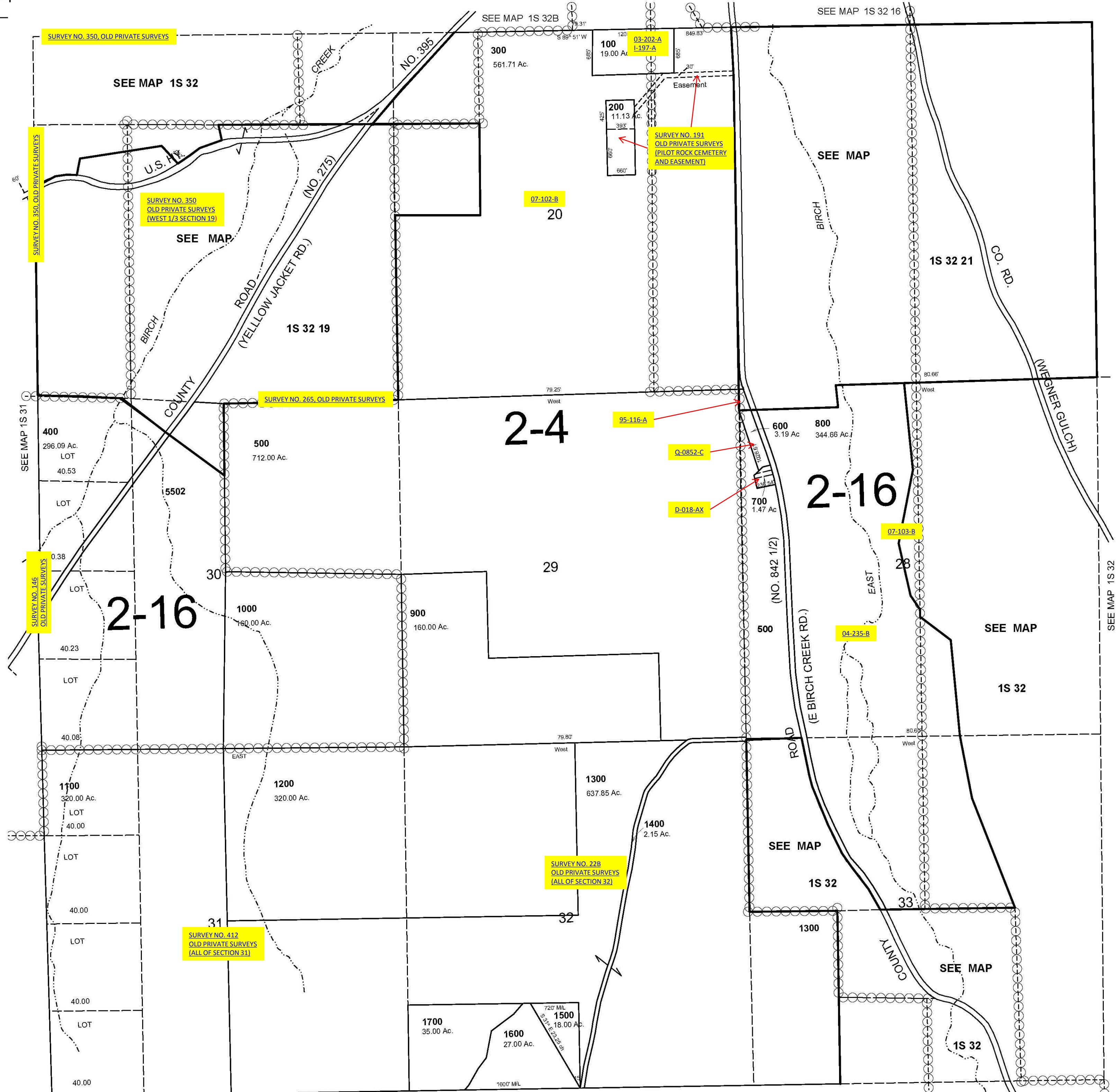
SW1/4 T1S R32E WM UMATILLA COUNTY

1/16/07

1S 32C

AERIAL PHOTO NO. 7P 23-29, 68-74 & 106-112

SCALE 1"=1000'



1S 32C